

Summer 2015

## Exhibitions and Events, Summer and Fall, 2015

University Galleries  
*Illinois State University*

Follow this and additional works at: <https://ir.library.illinoisstate.edu/cfaug>

Part of the [Art and Design Commons](#)

---

### Recommended Citation

University Galleries, "Exhibitions and Events, Summer and Fall, 2015" (2015). *University Galleries*. 7.  
<https://ir.library.illinoisstate.edu/cfaug/7>

This Book is brought to you for free and open access by the Art at ISU ReD: Research and eData. It has been accepted for inclusion in University Galleries by an authorized administrator of ISU ReD: Research and eData. For more information, please contact [ISURed@ilstu.edu](mailto:ISURed@ilstu.edu).

# SUMMER/FALL 2015

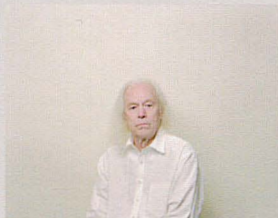
EXHIBITIONS & EVENTS

EXHIBITION

VISITING ARTIST LECTURE

SCHOOL OF ART RESEARCH COLLOQUIUM LECTURE

CONCERT



Jason Lazarus, *Eric Becklin, first human to see the center of our galaxy*, 2010. Archival pigment print. 32 x 40 inches. Permanent Collection of University Galleries of Illinois State University.

5/26-9/6 SELECTIONS FROM THE PERMANENT COLLECTION

5/26-9/6 GARY JUSTIS: SUN CELL

6/15-9/9 NORMAL REALITY

7/11 NEW SOUNDS UPTOWN CONCERT BY CROWN LARKS  
Saturday at 2pm

7/17 SYMPHONY SUMMER ARTS SAMPLER SERIES\*  
Friday at 7pm

7/31 SYMPHONY SUMMER ARTS SAMPLER SERIES\*  
Friday at 7pm

9/2 ANNIE ADAMS  
Wednesday at 12pm

9/2 CLOSING RECEPTION  
Wednesday, from 5 to 7pm

9/19 OPENING RECEPTION FOR ALUMNI SPECTACULAR  
Saturday, from 5 to 7pm

9/20-10/19 ALUMNI SPECTACULAR

9/22 JIN LEE  
Tuesday at 12pm

10/7 LAURA SPLAN  
Wednesday at 12pm

10/13 LAURA PRIMOZIC  
Tuesday at 12pm

10/28 OPENING RECEPTION FOR CARRIE SCHNEIDER  
Wednesday, from 5 to 7pm

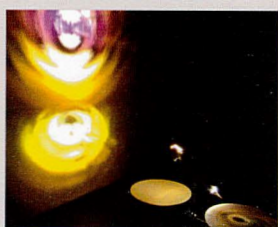
10/29-12/20 CARRIE SCHNEIDER

10/29 CARRIE SCHNEIDER LECTURE  
Thursday at 12pm

11/4 ADAM FARCUS  
Wednesday at 12pm

11/10 PETER BUSHELL  
Tuesday at 12pm

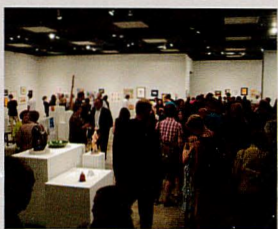
12/1 DAY WITH(OUT) ART



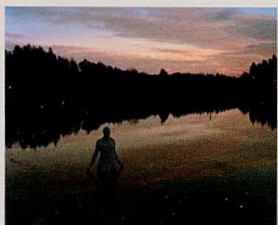
Gary Justis, *Sun Cell*, 2014. Kinetic light work: LED light, filters, motor, and aluminum. Dimensions variable. Courtesy of the artist.



Jaakko Pallasvu, *Utopia* (still from single-channel video), 2013. Courtesy of the artist.



2010 Alumni Spectacular opening reception.



Carrie Schneider, *WE (Baltic Version)*, 2008. C-print. 58 x 76 inches. Courtesy of the artist and Monique Meloche Gallery, Chicago.

ALL EVENTS ARE FREE AND OPEN TO THE PUBLIC.

\*Ticket purchase required

**g** UNIVERSITY  
GALLERIES  
College of Fine Arts  
11 Uptown Circle, Normal, IL 61761  
FineArts.IllinoisState.edu/galleries  
309.438.5487 • gallery@IllinoisState.edu



ILLINOIS STATE  
UNIVERSITY  
*Illinois' first public university.*



ILLINOIS  
ARTS  
COUNCIL  
AGENCY

Programs at University Galleries  
are partially supported by a grant from the  
Illinois Arts Council Agency.