

Illinois State University

ISU ReD: Research and eData

---

Normal Editions Workshop Newsletter

Art

---

2009

## Normal Editions Workshop Newsletter, 2009

Wonsook Kim School of Art

Illinois State University, [normalEditionsWorkshop@ilstu.edu](mailto:normalEditionsWorkshop@ilstu.edu)

Follow this and additional works at: <https://ir.library.illinoisstate.edu/new>



Part of the [Art and Design Commons](#)

---

### Recommended Citation

Wonsook Kim School of Art, "Normal Editions Workshop Newsletter, 2009" (2009). *Normal Editions Workshop Newsletter*. 19.

<https://ir.library.illinoisstate.edu/new/19>

This Book is brought to you for free and open access by the Art at ISU ReD: Research and eData. It has been accepted for inclusion in Normal Editions Workshop Newsletter by an authorized administrator of ISU ReD: Research and eData. For more information, please contact [ISUREd@ilstu.edu](mailto:ISUREd@ilstu.edu).



# NORMAL EDITIONS WORKSHOP

Richard Finch, Director and Professor of Art  
Veda Rives, Associate Director

SCHOOL OF ART COLLEGE OF FINE ARTS ILLINOIS STATE UNIVERSITY  
Center for the Visual Arts Box 5620 Normal, IL 61790-5620

PHONE: 309-438-7530

FAX: 309-438-2215

WEB: [http://www.cfa.ilstu.edu/normal\\_editions/](http://www.cfa.ilstu.edu/normal_editions/)

E-MAIL: [normaledtitionsworkshop@ilstu.edu](mailto:normaledtitionsworkshop@ilstu.edu)

[rdfinch@ilstu.edu](mailto:rdfinch@ilstu.edu)

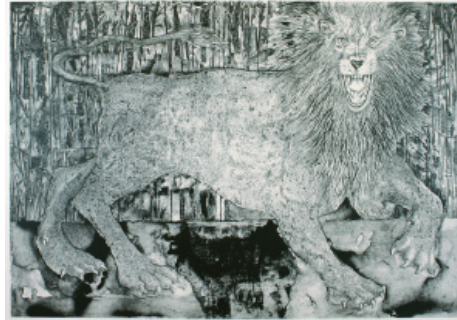
[vrives@ilstu.edu](mailto:vrives@ilstu.edu)

FALL 2009

NUMBER 18



*The Great Boar* by Rudy Pozzatti  
one-color lithograph, 25 5/8" x 33 3/4", 2009



*Nemean Lion* by Rudy Pozzatti  
one-color lithograph, 23 5/8" x 34 1/2", 2009



*Stymphalian Birds* by Rudy Pozzatti  
one-color lithograph, 25 5/8" x 33 3/4", 2009

## 2009 Contract Printing

Normal Editions Workshop (NEW) has undertaken a major contract printing project with **Rudy Pozzatti**, *The Twelve Labors of Hercules*, a suite of twelve prints. These large images were masterfully drawn by the artist using lithographic crayon, tusche, and subtractive methods on Artex textured film. Positive-working photo litho plates were made by David Keister and Rudy Pozzatti. NEW is printing each black and white image in an edition of twenty impressions, plus various proofs, on 27 1/2 x 39 1/2 inch Magnani Incisioni paper. This semester's printing team includes **Richard Finch**, **Veda Rives**, **Nick Satinover**, and **Brian Selke**. Editions which have been printed include *The Great Boar*, *Nemean Lion*, *Stymphalian Birds*, *Geryon*, and *Augean Stables*.



*Geryon* by Rudy Pozzatti  
one-color lithograph, 33 3/4" x 24 3/4", 2009

## MOMA Library Adds NEW Book

**Milan Hughston**, Chief of Library and Museum Archives at the Museum of Modern Art, was pleased to acquire a copy of *Marks from the Matrix* ■ *Normal Editions Workshop Collaborative Limited Editions Prints 1976-2006*, delivered by **Veda Rives** and **Meda Rives** during their recent visit to New York City. MOMA staff members had expressed a desire to add a copy of NEW's book publication to their collection because of its value as a research tool which documents thirty years of collaborative printing at Illinois State University, with over 100 artists of regional, national, and international reputation. *Marks from the Matrix* was edited by **Richard Finch** and Veda Rives with additional contributions from **Mark Pascale**, **David Keister**, **Buzz Spector**, and **James D. Butler**. It documents over 200 publications, highlighting contemporary artwork created at this print research facility in the School of Art by artists including Garo Antreasian, Phyllis Bramson, Byron Burford, Rodney Carswell, Nancy Davidson, Jane Dickson, Julia Fish, John Fraser, Sidney Goodman, Denise Green, Alex Grey, Arturo Herrera, John Himmelfarb, Mark Innerst, Suzanne Jackson, Ilya Kabakov, Wayne Kimball, Donald Lipski, Dennis Oppenheim, Richard Rezac, Kenny Scharf, Rosalyn Schwartz, Kiki Smith, Buzz Spector, Robert Stackhouse, John Whitesell, and David Wojnarowicz.

## Grant Award: Fiscal Year 2010

We are pleased to report that the Illinois Arts Council, a state agency, awarded a general operating support

grant to NEW for the fiscal year 2010. This program enhances public awareness of and interest in the visual arts. Major agenda items for the funding period include: continued development of *CVA Suite III* publication, a suite of four prints by Illinois artists; continued development of the *Figurative Portfolio* publication, a suite of prints using the human figure as a subject; collaboration with Rudy Pozzatti on a suite of twelve prints, *The Twelve Labors of Hercules*; stage two of *Frontiers in Printmaking: Conference Proceedings*, digital documentation; marketing and promotional strategies for stage two of the conference proceedings; continued marketing and distribution for both the traveling exhibition and accompanying book, *Marks from the Matrix* ■ *Normal Editions Workshop Collaborative Limited Editions Prints 1976-2006*; and continued development of the NEW archive and searchable database of limited edition prints.



Milan Hughston, Chief of Library and Museum Archives, MOMA, received a copy of *Marks from the Matrix* ■ *Normal Editions Workshop Collaborative Limited Editions Prints 1976-2006* from Veda and Meda Rives during a recent visit to New York City.



Silent Auction Item: *Heartland VIII* by Harold Gregor, 1989 six-color lithograph, 21" x 28 1/2" image, 30" x 36" framed

## Printmakers' Exhibition and Sale

The *25th Annual Printmakers' Exhibition and Sale* will be held on Friday, December 4th from 8 AM to 5:30 PM in the intaglio studio, room 123 in the Center for the Visual Arts (CVA) building. All prints are original artworks by ISU students, faculty, staff, alumni, and visiting artists. CVA is located on the south side of campus on Beaufort Street. Hourly parking is available in the south University structure on University Street.

**Four auction items** are featured in the event. *California, Ohio, Illinois* by **Sarah Smelser**, is a 10" x 16" monotype print, framed at 20" x 25". Minimum bid for this **framed impression** at the silent auction is \$300.00 (retail price of an unframed impression is \$600.00). *The Quiet Kind* by **Nick Satinover** is a 11" x 11" relief and etching, framed at 18" x 18". Minimum bid for this **framed impression** is \$150.00 (retail price of an unframed impression is \$300.00). *GroundCover--Spring and Summer*, by **Julia Fish**, is a 21" x 17 1/2" three-color lithograph, framed at 30" x 24". Minimum bid for this **framed impression** at the silent auction is \$350.00 (retail price of an unframed impression is \$700.00). *Heartland VIII* by **Harold Gregor** is a 21" x 28 1/2" six-color lithograph, framed at 30" x 36". Minimum bid for this



Silent Auction Item: *GroundCover--Spring and Summer* by Julia Fish, 1997 three-color lithograph, 21" x 17 1/2" image, 30" x 24" framed

**framed impression** is \$300.00 (retail price for the unframed impression is \$600.00).

Written bids may be submitted anytime before the deadline to: Richard Finch, Campus Box 5620, Illinois State University, Normal, IL 61790-5620. During the sale, written bids may also be submitted to the cashiers. Email bids are accepted at the following address: [normaleditionsworkshop@ilstu.edu](mailto:normaleditionsworkshop@ilstu.edu). All bids must be received by 5 PM on Friday, December 4th.

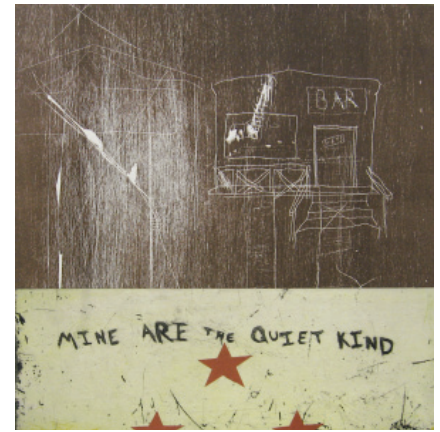
**All proceeds from the event will be used to support the ISU printmaking program. Silent Auction winners will be announced at 5:30 PM on December 4th. Participants need not be present to win.**

## Jim Butler Retires from Teaching

After thirty-nine years of teaching lithography and other art courses in the School of Art, College of Fine Arts at Illinois State University and Southern Illinois University at Edwardsville (SIUE), **Jim Butler** retired from teaching in May of 2009. Jim was recognized for his outstanding contributions to Illinois State in 2000 when he was awarded the title of Distinguished Professor. Jim's plans include a greater focus on his studio work, family, and travel. Current and upcoming publications and exhibitions are: included in the book, *60 Years of North American Prints 1947-2007*, published by The Boston Printmakers, Boston, MA, 2009; *Boston Printmakers Field Report Exhibition*, W. Keith and Janet Kellogg University Art Gallery, California State Polytechnic University, Pomona, CA, November 10 - December 12, 2009; *The Founders*, an exhibition featuring artists / professors at Southern Illinois University Edwardsville, who are / were responsible for the onset and development of the Art and Design Department over the past fifty years (opening December 4, 2009, Morris University Center Gallery, SIUE, Edwardsville, IL); panel member, "The Incomplete Printmaker" at the Pennsylvania Academy of the Fine Arts, Philadelphia, PA, Southern Graphics Council conference, March 25, 2010; and *Double Take*, a retrospective exhibition of prints, drawings, and paintings from 1970 to 2010, Illinois Wesleyan University, Bloomington, IL, June-August, 2010.

## Personnel News

Welcome to our new instructor for lithography, **Tim Van Ginkle**. Tim received his MFA degree from the University of Iowa in Iowa City, IA and is teaching two



Silent Auction Item: *The Quiet Kind* by Nick Satinover, 2008, relief and etching, 11" x 11" image, 18" x 18" framed

classes, ART 346 Lithography II and ART 246 Lithography I, each semester of this academic year.

Welcome to our new graduate students, **Lisa Lofgren** and **Megan Stroech**, who began the MFA program in printmaking in August 2009. Lisa's BFA degree is from the University of Wyoming in Laramie. Megan's BFA degree is from the University of Texas at Austin. Lisa and Megan join current MFA students, **Nick Satinover** and **Jared Wittenmyer**, whose undergraduate degrees are from Wright State University, Dayton, OH and the University of Iowa, Iowa City, IA, respectively. We appreciate the assistance of the printmaking graduate students through their graduate assistant assignments this semester: Nick Satinover, Normal Editions Workshop and teaching one section of ART 246 Lithography I; Jared Wittenmyer, assisting in ART 346 Lithography II and ART 345 Intaglio II; Lisa Lofgren, assisting in ART 246 Lithography I and ART 245 Intaglio I; and Megan Stroech, assisting in ART 246 Lithography I and ART 245 Intaglio I.

Congratulations to graduates from the MFA program, **Jenny Hansen**, who completed her degree in May; and **Eleanor Jensen**, who is scheduled to complete her degree in December.

Congratulations to **Brandon Gunn**, who is now a master printer at Stinger



Silent Auction Item: *California, Ohio, Illinois* by Sarah Smelser, 2008, monotype, 10" x 16" image, 20" x 25" framed

Editions, Concordia University, Montreal, Canada. Brandon received his MFA degree in May 2006 from ISU and TMP (Tamarind Master Printer) in 2008 from the Tamarind Institute, a division of the College of Fine Arts, University of New Mexico, Albuquerque, NM.

**Mitch Mitchell**, a BFA graduate from ISU, is finishing the MFA program at the University of Alberta in Edmonton, Canada, where he works with faculty member Sean Caulfield, an established artist and former intaglio professor at Illinois State University. Mitch returned to this campus September 16 to present information about his current working methods, including a demonstration of digital photo-gravure techniques, to the Intaglio II class and spoke about his experiences applying for and working in an MFA degree program to interested BFA students.

We are again pleased to welcome back to Illinois State University a BFA alum as a part time instructor this semester.

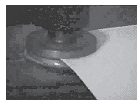
**Johnny Disco** received his MFA from the University of Washington, Seattle, WA, and is currently teaching a beginning intaglio class. He maintains an active studio practice with a focus on mezzotint prints and is presently pursuing teaching positions in the field.

### Selected Staff Activities, 2009

A selected list of NEW staff exhibition records and activities includes **Veda and Meda Rives'** collaborative works: a short-term visiting artists' residency at Memphis College of Art, Memphis, TN, which included a solo exhibition and public lecture, *BookEnviron: Memphis*, at On the Street Gallery, presentations to undergraduate printmaking classes, and individual critiques with graduate



This publication is the result of a program which was partially supported by a grant from the Illinois Arts Council.



### Normal Editions Workshop Newsletter

Published irregularly by  
Normal Editions Workshop  
Campus Box 5620, School of Art  
Illinois State University, Normal, IL 61790-5620

Normal Editions Workshop would like to thank Nick Satinover for his assistance in preparing this newsletter.  
Photo credits: Meda Rives, Sherry Smith, and Nick Satinover



Richard Finch, James D. Butler, and Veda Rives talked with many individuals during the Vendor's Fair, Southern Graphics Council conference, Chicago, IL, March, 2009

students, October 18-24 (exhibition ends December 19); a solo exhibition and public lecture, *Magnolia BookEnviron: Artists' Books as Shelter, Escape, Epiphany; Shaping Our Space, Our Thoughts, and Our Aspirations*, Burgess Gallery, Eureka College, Eureka, IL, September 1 - October 15; artwork included in the juried member's exhibition *Friends of Dard Hunter Tokyo Exhibition: A Selection of Handmade Paper Art*, Ozu Washi Gallery and Oji Paper Museum, Tokyo, Japan, catalog, August 31 - September 5; installation included in the juried exhibition *Threads: Interweaving Textu[r]al Meaning*, and artists' talk July 29, The Center for Book Arts, New York City, NY, catalog, July 8 - September 12.

Selected exhibitions and activities for **Richard Finch** include *Prints USA 2009*, City of Springfield Art Museum, Springfield, MO, Nov. 20, 2009 – Jan. 10, 2010; *Hand-Pulled Prints International XIV*, Stonemetal Press Gallery, San Antonio, TX, May, 2009; and *Mid-America Print Council 2009 Members Salon*, Morgan Art of Papermaking Conservatory and Educational Foundation, Cleveland, OH, May 1- June 27, 2009. Richard Finch is one of 34 artists included in the exchange portfolio, *Reunion: Images 2010*, which will be exhibited at the Crane Arts Building, Southern Graphics Council conference, Philadelphia, PA in March, 2010. Other artists include Rosemarie Bernardi, Carmen Colangelo, Sydney Cross, Barbara Duval, Scott Evans, Debra Fisher, Oscar Gillespie, Beth Grabowski, Joan Hall, Adele Henderson, Kathy Hettinga, David Johnson, Sarojini Jha Johnson, April Katz, Kurt Kemp, Leslie Koptcho, Karen Kunc, Robert Lazuka, Patrick Lindhardt, Beauvais Lyons, Kathryn Maxwell, Hugh Merrill, David Morrison, James Robert Pace, Andrew Rubin, Joe Sanders, Larry Schuh,

Linda Seckinger, Bradlee Shanks, Mark Sisson, Kimberly Vito, Art Werger, and Judy Youngblood.

**Nick Satinover**, MFA student, and **Brian Selke**, BFA student, organized an exchange portfolio, *The Indirect Index*, consisting of prints by 11 artists, including themselves and Sarah Foley, Eleanor Jensen, Ben Gardner, Julia Goos, Mark Ritchie, Lisa Lofgren, John Swindler, Frank Travers, and Johanna Paas. *The Indirect Index* has been exhibited twice, to date: Transpace Gallery, ISU, Normal, IL, May 5-30, 2009 and Morgan-Hammond Print Gallery, University of Georgia, Athens, GA, fall semester 2009.

### CFA Table Highlighted NEW

NEW was the highlighted unit featured at the College of Fine Arts (CFA) display table during the Founders Day Convocation, April 30th. Founders Day at Illinois State celebrates the University's establishment in 1857 and brings the campus together for reflection and celebration. Jim Butler participated as a bell ringer in the annual bell-ringing ceremony. In addition to several awards and recognition of accomplishments by many individuals, the convocation featured Illinois Governor Pat Quinn as guest speaker. The CFA table display included photos of NEW's highlights over the past 30 years, selected print publications, and printmaking tools.

### Report on 2008 Print Sale

Highlights from the *24th Annual Printmakers' Exhibition and Sale*, which was held on December 5, 2008, include a high volume of print sales, increased student participation, and silent auction. The silent auction winning bids for *Child and Bully* by Harold Boyd, *Plank* by John Himmelfarb, and an untitled print

by Sarah Smelser were submitted by Rebecca Novack. The print sale was well attended by both community and campus members. The printmaking area would like to express appreciation to all who helped make it a success.

### **Publisher Table at SGC Chicago**

NEW participated in the Publisher Table event at Southern Graphics Council conference in Chicago, *Global Implications*, which was hosted by Columbia College Chicago, March 25-29, 2009. Richard Finch, Veda Rives, Jim Butler, and Meda Rives represented NEW and the School of Art in presenting information and materials about the programs in the School of Art, College of Fine Arts at Illinois State University. The conference had a record attendance and was based in the Hilton Chicago hotel on Michigan Avenue. NEW was one of eighteen print publishers presenting information, along with twenty-two vendors, and hundreds of individual artists displaying their portfolios. Other print publishers included Robert Blackburn Printmaking Workshop, New York, NY; Proyecto'ace, Buenos Aires, Argentina; Hui Press, Hui No'eau Visual Arts Center Makawao, Maui, HI; The San Jose Institute of contemporary Art, San Jose, CA; and The Boston Printmakers, Boston, MA.

### **Endowment Established for NEW**

We are pleased to report that a long-time goal for the Workshop was realized finally. A significant achievement within this past year is the successful establishment of the *Normal Editions Workshop Endowed Fund* with an initial gift of \$4,000.00. This dedicated support will be a great benefit and help to sustain the mission of the Workshop well into the future. Now our goal is to add at least \$4,000.00 each year for the next four years to meet the minimum amount of \$20,000.00 to fully fund the endowment. The endowment must be fully funded before it can be accessed to pay any expenses of the Workshop.

You can add your support to the *Normal Editions Workshop Endowed Fund* with your gift. You will find a link to a pdf gift form on our website: [http://www.cfa.ilstu.edu/normal\\_editions/](http://www.cfa.ilstu.edu/normal_editions/). Print the form, fill in the blanks, and mail it with your donation. Or, you can complete the transaction online by going to <http://www.illinoisstate.edu> and click on the "giving to Illinois State" tab. Be sure to choose a designation for your gift and type in "Normal Editions Workshop" in

the "Search Fund Designation" dialog box. Then finish your financial information and submit your gift. We certainly appreciate your support!

NEW's agenda to increase the public awareness of the Workshop and its programs has been supported by Illinois Arts Council grants in several recent years. These efforts continue to reap benefits in the form of wider public audiences for visual dialogue, increased volunteer help, donations, and sales of publications. Recent cash donations and sales of donated artworks have been higher, allowing NEW to set aside some of the donated funds for the purpose of establishing the endowed fund. This support has helped NEW continue its daily agenda while establishing investments of other funds for the benefit of the Workshop in future years.

### **Publisher Table at SGC Philadelphia**

NEW plans to participate in the Publisher Table event at Southern Graphics Council conference in Philadelphia, *Mark Remarque*, which is sponsored by Tyler School of Art, Temple University; PennDesign, Moore College of Art and Design; Pennsylvania Academy of the Fine Arts; The University of the Arts; and Pennsylvania Council on the Arts, March 24th - 27, 2010 in Philadelphia. Please stop by our table if you are also at the conference.

### **Proceedings Nearing Completion**

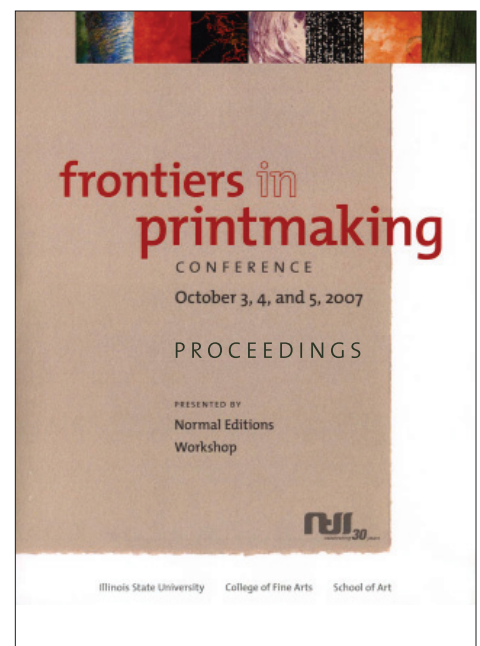
A conference proceedings document has been under development since the time of the *Frontiers in Printmaking* conference, October 3-5, 2007. Highlights from that event include twenty-two presenters sharing their insights on various aspects of printmaking and its contributions to visual culture. A keynote speech by Ruby Pozzatti, *Printmaking in America*, three panels, seven presentations, six demonstrations, twelve exhibitions, and various handouts are documented in printed text and / or digital video recordings. Presenters included Xiaowen Chen, Sean Caulfield, Todd DeVriese, Steve Gossard, Randy Hemminghaus, Jonathan Higgins, David Keister, Wayne Kimball, Joni Kinsey, Mark Klett, Kathleen Lonbom, Robin McCloskey, Rachel Melis, Gregory Page, Rudy Pozzatti, Eric Rohmann, Buzz Spector, Jamie Stukenberg, Akiko Taniguchi, Teresa Thomason, John Whitesell, and Koichi Yamamoto. *Frontiers in Printmaking: Conference Proceedings* is the publication

which is nearing completion. It is edited by Richard Finch and Veda Rives, with many photographs of the activities.

While serving as a documentation of the event, it is hoped that the proceedings publication will also extend the program to wider audiences, continuing this significant outreach effort into the future. Momentum from the activities celebrating the 30th anniversary of Normal Editions Workshop in 2006 is ongoing since the time of the conference which connected art students, professionals, and the general public with contemporary and historical aspects of printmaking. The impact of the conference continues to resonate in both the daily routines of the Workshop and art community.

### **Open Invitation**

NEW has an ongoing commitment to the production of limited edition prints in collaboration with visiting artists—including many who have not worked previously with the printmaking media—and the distribution of these images to promote visual dialogue among a variety of audiences. The opportunities for these artists to explore (with Workshop staff) the challenging, expressive, and creative potentials of printmaking have allowed the artists the freedom to concentrate on their visual imagery while learning about the expressive potentials of printmaking. The collaborative process always yields many insights for the artists, the staff involved in the projects, and the observers. Proposals for projects are welcome and reviewed periodically.



*Frontiers in Printmaking: Conference Proceedings*  
cover

# Normal Editions Workshop

Professor Richard Finch, Director

Veda Rives, Associate Director

College of Fine Arts, School of Art

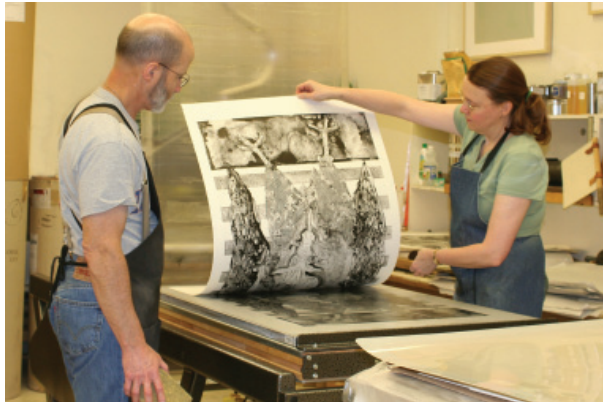
Illinois State University

Campus Box 5620

Normal, IL 61790-5620

E-mail: [normalEditionsWorkshop@ilstu.edu](mailto:normalEditionsWorkshop@ilstu.edu)

PRSR STD  
U.S. POSTAGE  
PAID  
ILLINOIS STATE  
UNIVERSITY



Richard Finch and Veda Rives printing a Pozzatti project impression at the new Takach motorized lithography press in NEW.

## NEW Sponsors Awards

**Brian Selke** is the 2008-2009 Normal Editions Workshop Scholarship award winner. Brian is an undergraduate student in the BFA program in printmaking. The Normal Editions Workshop Scholarship is based on outstanding artistic ability and performance in printmaking. The award is open to both graduate and undergraduate art students who have an emphasis in printmaking and will be attending Illinois State University during the following academic year. Each spring the School of Art's Scholarship Committee reviews portfolios submitted by art students and selects winners for a variety of awards and scholarships.

NEW also sponsors printmaking awards for the annual student juried show. At the

2009 Student Annual Exhibition, held in the spring semester, "Best Undergraduate Print Award" went to **Sarah Foley** for her monotype on handmade paper entitled *Fickle Willow*. "Best Graduate Print Award" went to **Nick Satinover** for *Unfiltered Friday Afternoon*, a woodcut and lithograph (diptych).

## MFA Degree Applications

Master of Fine Arts Degree applications in printmaking for Fall 2010 are being accepted. One graduate assistantship position in printmaking is anticipated, beginning Fall 2010. Contact Richard Finch, Veda Rives, or Sarah Smelser by phone at 309-438-7530 or e-mail [rdfinch@ilstu.edu](mailto:rdfinch@ilstu.edu) for more information about printmaking at Illinois State

University. Completed applications should be received by February 1, 2010 for full consideration. Other disciplines for graduate work in the School of Art (SOA) include drawing, painting, photography, sculpture, glass, ceramics, metalwork / jewelry design, and video. Other graduate degrees offered in the SOA include a MA / MS with Art Education Sequence and the newly established MA in Visual Culture. Questions may be directed to [gradart@ilstu.edu](mailto:gradart@ilstu.edu) or the School of Art (309-438-5621). Information and applications are available online at <http://www.cfa.ilstu.edu/art/mfa/> Please note that the University has implemented on-line applications for all graduate programs at the following link: <http://www.illinoisstate.edu/welcome2isu>

## The 25th Annual

# PRINTMAKERS' EXHIBITION AND SALE

Illinois State University Center for the Visual Arts

CVA Room 123, Friday, December 4th 8 a.m. - 5:30 p.m.

See related article inside for more details on this unique opportunity.

# GIFT FORM

Name: \_\_\_\_\_

Address: \_\_\_\_\_

City, St, Zip: \_\_\_\_\_

Spouse: \_\_\_\_\_

Phone: \_\_\_\_\_

Email: \_\_\_\_\_

## GIFT INFORMATION

\_\_\_\_\_ A check for my gift of \$\_\_\_\_\_ is enclosed.  
Checks should be made payable to the *Illinois State University Foundation*.

\_\_\_\_\_ Please charge my gift of \$\_\_\_\_\_ to the following credit card:

Circle One: VISA    MASTERCARD    DISCOVER

Name on card: \_\_\_\_\_

Account #: \_\_\_\_\_ Exp. Date: \_\_\_\_\_

Signature: \_\_\_\_\_

## GIFT DESIGNATION:

Please restrict my gift for:    Normal Editions Workshop

**If your gift can be matched by your employer or your spouse's employer's matching gift program, please check with your personnel or benefits office for details and the proper form to enclose.**

Please mail this form along with your contribution directly to :

Illinois State University Foundation  
Campus Box 8000  
Normal, IL 61790-8000