

2005

Normal Editions Workshop Newsletter, 2005

School of Art

Illinois State University, normalitionsworkshop@ilstu.edu

Follow this and additional works at: <https://ir.library.illinoisstate.edu/new>



Part of the [Art and Design Commons](#)

Recommended Citation

School of Art, "Normal Editions Workshop Newsletter, 2005" (2005). *Normal Editions Workshop Newsletter*. 9.
<https://ir.library.illinoisstate.edu/new/9>

This Book is brought to you for free and open access by the Art at ISU ReD: Research and eData. It has been accepted for inclusion in Normal Editions Workshop Newsletter by an authorized administrator of ISU ReD: Research and eData. For more information, please contact ISUReD@ilstu.edu.



PHONE: 309-438-7530

NORMAL EDITIONS WORKSHOP

Richard Finch, Director and Professor of Art
Veda Rives, Associate Director

Center for the Visual Arts Box 5620, Illinois State University Normal, IL 61790-5620

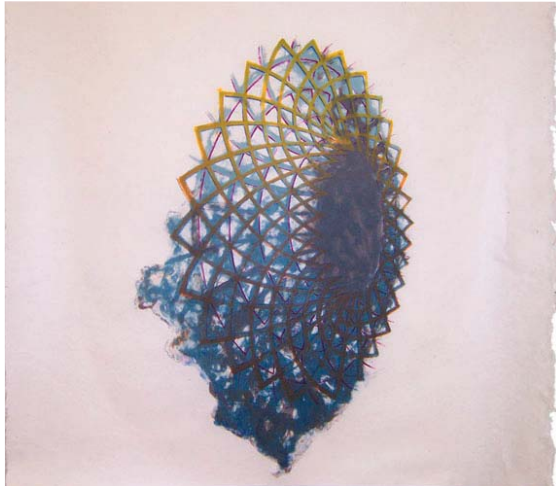
FAX: 309-438-5625

WEB: http://www.cfa.ilstu.edu/normal_editions/

E-MAIL: rdfinch@ilstu.edu & vrives@ilstu.edu

FALL 2005

NUMBER 14



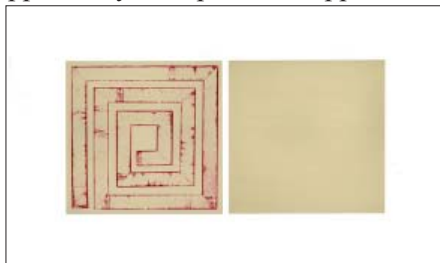
untitled by Dan Gamble, seven-color lithograph
14 1/2" x 8 5/8"



Dan Gamble, visiting artist, Jason Judd, student intern, and Veda Rives, Associate Director during a color trial proofing session.

2005 PUBLICATIONS

Dan Gamble, an established artist who lives and works in Chicago, Illinois, completed a one-week visiting artist residency at Normal Editions Workshop in February 2005. This program was sponsored partially by a grant from the Illinois Arts Council (IAC), an agency of the State of Illinois. Mr. Gamble collaborated with the N.E.W. staff during his stay to produce an untitled seven-color lithograph. Toner washes on mylar and photo lithographic techniques were utilized in creating the image. The edition of 30 impressions was handprinted on Edgeworthia OWH paper measuring 15 x 17 1/4 inches by Veda Rives with assistance from Richard Finch, Lea Friesen, Brandon Gunn, Jason Judd, and Meda Rives. The retail price is \$300.00. We take this opportunity to express our appreciation



untitled by John Fraser
two-color lithograph, 15" x 22 1/2"

to the IAC for the support of this project: *Dan Gamble at Normal Editions Workshop, Illinois State University.*

Three editions of prints for **John Fraser** were completed in the spring semester. *Black Square, Red Square*, and an untitled print are two-color lithographs by the well known artist from St. Charles, Illinois. The latter edition (of twenty-five impressions) was handprinted by Brandon Gunn with assistance from Richard Finch, Jason Judd, Colin Nesbit, Meda Rives, and Veda Rives. The 15 x 22 1/2 inch images were printed on BFK Rives, white paper. The retail price of the untitled print is \$450.00. *Black Square* and *Red Square* were handprinted in editions of fifteen impressions each by Brandon Gunn with assistance from Richard Finch, Lea Friesen, Jason Judd, Colin Nesbit, Meda Rives, and Veda Rives. The 22 1/2 x 15 inch images were printed on BFK Rives white paper. The retail price of the *Black Square* and *Red Square* is \$200.00 each. John Fraser participated in a visiting artist residency at Normal Editions Workshop in March 2004. This program was sponsored partially by a grant from the Illinois Arts Council.

GRANT AWARD: FISCAL YEAR 2006

We are very pleased to report that the Illinois Arts Council has awarded a special project grant supporting N.E.W.'s ongoing traveling exhibition program to enhance public awareness of and interest in the visual arts. This includes publication of documentation to accompany these exhibitions and production of a new catalog to accompany the exhibition, *Normal Editions Workshop: 30 Year Retrospective*. This comprehensive overview of the artwork produced by the Workshop is scheduled for FY 2007 at University Galleries, Illinois State University, Normal, Illinois. Other venues are sought.

N.E.W.'s traveling exhibition program currently supports four selections of original limited edition prints from the N.E.W. archives. *Illinois Artists at Normal Editions Workshop* features 55 works; *Normal Editions Workshop: The Intimate Print* features 42 prints mounted uniformly on 18 by 24 inch mat boards (with plexiglass); *Normal Editions Workshop: Selected Impressions* and *Normal Editions Workshop: A Print Retrospective* feature 25 and 80 works respectively, by a variety of artists. The works show

great diversity in the subject matter, stylistic approaches and printmaking media utilized. Rental fees, insurance costs, and shipping charges apply. The rental fees may be applied to the purchase of impressions from the editions featured in the exhibitions.

The above mentioned exhibits are listed in the *ARTSTOUR 2005-2007* program of the Illinois Arts Council. Illinois institutions may apply to the IAC for funding to host these exhibitions (1-800-237-6994). For an on-line preview, see the Traveling Exhibition web page at http://www.cfa.ilstu.edu/normal_editions/newex.html

These exhibitions represent N.E.W.'s ongoing commitment to the production of visual images in collaboration with visiting artists and the distribution of these images to promote visual dialogue with a variety of audiences.

CURRENT VISITING ARTIST

Harold Boyd is a nationally recognized artist and teacher who lives and works in Bloomington, Illinois. His MFA is from University of Kansas, Lawrence, KS. Mr. Boyd is an Illinois State University School of Art Emeritus Professor who retired five years ago. Awards include an individual artist's grant from the National Endowment for the Arts and four bronze figures commissioned by the Central Illinois Regional Airport.

Mr. Boyd is collaborating with the staff of Normal Editions Workshop to produce a limited edition print during a short-term residency in FY 2006. The work is underway at this time and includes several printing elements for what is intended to be a multi-color 30 x 22 inch lithograph. This



Normal Wooded Interior by Wayne Kimball

print is the first in a set of prints for a figurative portfolio. Activities for the residency at N.E.W. include a public lecture to community and campus members regarding his work, artistic insights, current endeavors, and recent achievements which was held October 20 to a standing room only crowd in CVA 30. In addition, public presentations will be ongoing, with demonstrations of his working methods, as Mr. Boyd explores the challenging, expressive, and creative potentials of printmaking in collaboration with the professional staff at N.E.W.

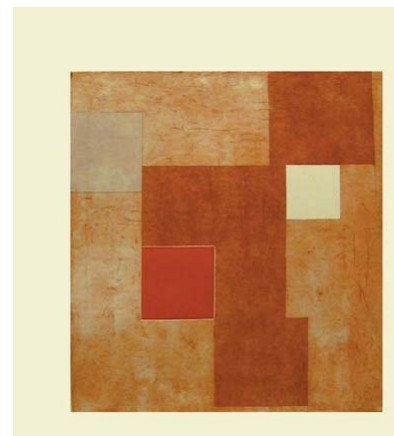
PRINTMAKERS' EXHIBITION AND SALE

The 21st Annual Printmakers' Exhibition and Sale will be held on Friday, December 9th from 8 a.m. to 6 p.m. in the intaglio studio, room 123 in the Center for the Visual Arts (CVA) building. All prints are original artworks by ISU students, faculty, staff, and visiting artists. CVA is located on the south side of campus on Beaufort Street. Hourly parking is available in the south University structure on University Street. Please do not park in any reserved spaces.

Two prints for the **silent auction**:
Normal Wooded Interior by **Wayne Kimball**, impression number 19/50, which is one of 3 remaining impressions from this nearly sold-out edition. The 11 x 14 inch print is an eleven-color lithograph printed on Rives BFK gray paper. The minimum bid for this **framed** impression at the silent auction is \$300.00. (The retail price of an unframed impression is \$500.00.)

untitled intaglio by **Rodney Carswell**, impression number 2/12. The 24 3/4 x 22 1/4 inch print is a two-color intaglio with collé printed on Arches cover white with lightweight laid kozo collé. The minimum bid for this **framed** print is \$200.00. (The retail price of this unframed impression is \$300.00.)

Written auction bids may be submitted anytime before the conclusion of the sale to: Richard Finch, Campus Box 5620, Illinois State University, Normal, IL 61790-5620. During the sale, writ-



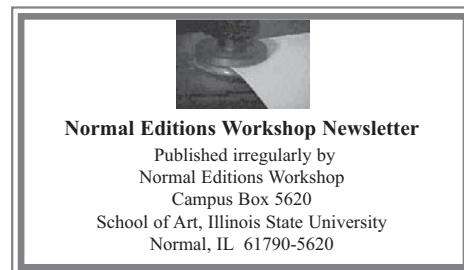
untitled by Rodney Carswell

ten bids may also be submitted to the cashier. E-mail bids are accepted via the following address: rdfinch@ilstu.edu. All bids must be received by 6 p.m. on Friday, December 9th.

Two prints will be raffled. Impression number 24/30 of the print **untitled** by **David Tell** is an 11 x 14 inch one-color lithograph printed in black ink on Arches Cover buff paper. The retail price of this print is \$50.00. **Pools** by **Lea Friesen** is an 8 1/4 x 11 1/4 inch three-color monoprint and collé. The retail price of this print is \$50.00. Each of the raffle prints is matted on 18 x 24 inch archival mat and foam boards. **Raffle tickets are only \$1.00 each** and are available in CVA Room 129A (N.E.W) prior to the sale day and in CVA Room 123 during the *Printmakers' Exhibition and Sale*. All proceeds will be used to support the ISU printmaking program. All winners will be announced at the end of the sale on December 9th at 6 p.m. Participants need not be present to win.

PERSONNEL NEWS

Welcome to our new graduate student, **Julia Pence**, who began the MFA program in printmaking in August 2005. Julia's BFA degree



Normal Editions Workshop would like to thank Veda Rives and Meda Rives for their assistance in preparing this newsletter.



Pools by Lea Friesen

is from University of Wyoming in Laramie. Julia joins current MFA students **Shawn Ballarin**, **Lea Friesen**, **Brandon Gunn**, and **Steven Wirth** who hail respectively from University of Nebraska in Lincoln, University of Wisconsin at Stevens Point, Brigham Young University in Utah, and West Virginia University in Morgantown. We appreciate the assistance of the printmaking graduate students through their Graduate Assistant assignments this semester: **Brandon Gunn**, Normal Editions Workshop and assisting in ART 346 Lithography II; **Lea Friesen**, Normal Editions Workshop and teaching one section of ART 245 Intaglio I; **Steven Wirth**, teaching one section of ART 245 Intaglio I and lab hours in intaglio; **Shawn Ballarin**, assisting in 246 Lithography I and lab hours in intaglio; and **Julia Pence**, assisting in 246 Lithography I and 245 Intaglio I.

RECENT CONTRACT PROJECTS

Forest by the Chicago artist, **John Himmelfarb**, is a two-color lithograph measuring 19 1/2 x 41 inches, printed in fire red and cool black on BFK Rives, unsized, white paper. The edition of 12 impressions was handprinted by Veda Rives with assistance from Richard Finch, Brandon Gunn, and Jason Judd.



Forest by John Himmelfarb

RAY GEORGE 1933-2005

Professor Emeritus in the School of Art, **Raymond E. George** passed away May 5. Ray George taught Printmaking (Intaglio) and Drawing with 27 years of service to Illinois State University when he retired in 1997. He was a strong supporter of Normal Editions Workshop and will be greatly missed. A memorial plaque, made possible by donations from printmaking alumni, will soon be installed in CVA.

NEW AT N.E.W.

www.cfa.ilstu.edu/normal_editions

N.E.W.'s web site address, which was changed as part of the College of Fine Arts (CFA) web project in 2004, is now well established and all older addresses will no longer be redirected automatically. Updating your bookmarks to our new address is vital to keeping current on N.E.W. activities, especially the event calendar where the visiting artist schedules, recent publication information, and printsale events are posted.

www.cfa.ilstu.edu/art/normaleditions/ is a new quick link to an introduction page for N.E.W. on the Schools of Art, Music, Theater and CFA pages. Our regular site is linked on this new opening page. N.E.W. staff members appreciate the College of Fine Arts webpage managers for this link, which greatly increases the visibility of Normal Editions Workshop's activities via the University website.

REPORT ON 2004 PRINTSALE

Highlights from the *20th Annual Printmakers' Exhibition and Sale*, which was held on December 10, 2004, include the highest volume of sales of

prints in the past five years, increased participation by many students new to this venue, and successful raffle and silent auction events. **Erin Furimsky** won the raffle of the four-color lithograph *Hope*, by Michael



untitled by David Tell

Dubina. The winning bid for the silent auction of the eight-color lithograph *AM* by **John Fraser** was submitted by **Ron Mottram**. The printsale was well attended by both community and campus members, and the printmaking area would like to express appreciation to all who helped to make it a success.

TRAVELING EXHIBITIONS

West Virginia University in Morgantown hosted an exhibition of selected works from N.E.W., January 20-February 18, 2005. The exhibit featured 30 works by the following artists: **George Atkinson**, **Phyllis Bramson**, **James D. Butler**, **Rodney Carswell**, **Julia Fish**, **John Fraser**, **Harold Gregor**, **Arturo Herrera**, **John Himmelfarb**, **David Hodges**, **Keith Jacobshagen**, **David Moreno**, **Dann Nardi**, **John Phillips**, **Dennis Oppenheim**, **Richard Rezac**, **Rosalyn Schwartz**, and **David Wojnarowicz**.

Chop Mark II was hosted by H.F. Johnson Art Gallery, Carthage College, in Kenosha, WI, February 24-April 9, 2005. The exhibit featured prints published by various workshops and included works by **Phyllis Bramson**, **Rodney Carswell**, and **Julia Fish** from the Normal Editions Workshop archives.

University Galleries hosted *Selections from the Permanent Collection*, June 1-September 15, 2005 in Gallery 1. This exhibition featured several prints co-published by Normal Editions Workshop and University Galleries, including works by **Jane Dickson**, **Mark Forth**, **Alex Grey**, **David Hodges**, **Mark Innerst**, **Donald Lipski**, **Dennis Oppenheim**, **Kenny Scharf**, **Kiki Smith**, and **David Wojnarowicz**.

Normal Editions Workshop

Professor Richard Finch, Director

Veda Rives, Associate Director

Center for the Visual Arts, School of Art
Illinois State University
Campus Box 5620
Normal, IL 61790-5620

PRSR STD
U.S. POSTAGE
PAID
ILLINOIS STATE
UNIVERSITY

Our e-mail addresses are:

rdfinch@ilstu.edu and vrives@ilstu.edu



Richard Finch and Veda Rives proofing a stone at the litho press.

MFA DEGREE APPLICATIONS

Master of Fine Arts Degree **applications in Printmaking** for Fall 2006 are being accepted. Two graduate assistantship positions in Printmaking are anticipated, beginning Fall 2006. Contact Richard Finch, Jim Butler, or Sarah Smelser by phone at 309-438-7530 or e-mail ssmelse@ilstu.edu or jdbutle@ilstu.edu for more information about printmaking. Completed applications should be received by Feb. 1, 2006 for full consideration. The School of Art also offers MFA degrees in the following areas of study: Drawing, Painting, Photography, Sculpture, Glass, Ceramics, Metals/Jewelry, and

Video. Questions may be directed to gradart@ilstu.edu or the School of Art (309-438-5621). Information and applications are available online at <http://www.cfa.ilstu.edu/art/graduate/mfaadmission.shtml>

N.E.W. AWARDS

Michelle Diaz is the 2005-2006 Normal Editions Workshop Scholarship award winner. Michelle is an undergraduate in the BFA program with a concentration in printmaking. Each spring the School of Art's Scholarship Committee reviews portfolios submitted by art students and selects winners for a variety of awards and scholar-

ships. The Normal Editions Workshop Scholarship is based on outstanding artistic ability and performance in printmaking and is open to both graduate and undergraduate art students who have an emphasis in printmaking and will be attending Illinois State University in the following academic year.

N.E.W. also sponsors awards for printmaking at the annual student juried exhibition. At the *2005 Student Annual Exhibition*, held in the spring semester, the "Best Undergraduate Print Award" went to **Mark Gentile's** lithograph *Stone Holder* and the "Best Graduate Print" went to **Brandon Gunn's** mezzotint and etching *Bound*.

THE 21ST ANNUAL *PRINTMAKERS' EXHIBITION AND SALE*

ILLINOIS STATE UNIVERSITY CENTER FOR THE VISUAL ARTS

CVA ROOM 123 FRIDAY, DECEMBER 9TH 8 A.M. - 6 P.M.

See related article inside for more details on this unique opportunity.