

2000

## Normal Editions Workshop Newsletter, 2000

School of Art

*Illinois State University*, [normaleditionsworkshop@ilstu.edu](mailto:normaleditionsworkshop@ilstu.edu)

Follow this and additional works at: <https://ir.library.illinoisstate.edu/new>



Part of the [Art and Design Commons](#)

---

### Recommended Citation

School of Art, "Normal Editions Workshop Newsletter, 2000" (2000). *Normal Editions Workshop Newsletter*. 14.  
<https://ir.library.illinoisstate.edu/new/14>

This Book is brought to you for free and open access by the Art at ISU ReD: Research and eData. It has been accepted for inclusion in Normal Editions Workshop Newsletter by an authorized administrator of ISU ReD: Research and eData. For more information, please contact [ISUReD@ilstu.edu](mailto:ISUReD@ilstu.edu).



# NORMAL EDITIONS WORKSHOP

Richard Finch, Director and Professor of Art

Veda Rives, Associate Director

Center for the Visual Arts Box 5620

Illinois State University Normal, IL 61790-5620

PHONE: 309-438-7530

FAX: 309-438-8318

WEB: <http://www.orat.ilstu.edu/~rfinch/>

EMAIL: [rdfinch@oratmail.cfa.ilstu.edu](mailto:rdfinch@oratmail.cfa.ilstu.edu) & [vrives@oratmail.cfa.ilstu.edu](mailto:vrives@oratmail.cfa.ilstu.edu)

FALL 2000

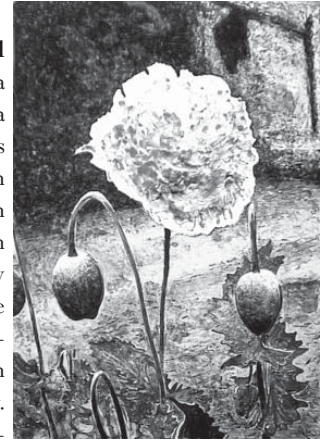
NUMBER 9



Rodney Carswell working with several monoprints, April 2000.

utilizing various combinations of intaglio and relief printing elements, colle papers, and color changes. A set of eight unique impression/color monoprints utilizing intaglio and woodcut plates were executed during the residency. The monoprints were hand-printed by Richard Finch, with assistance from Meda Rives and Veda Rives. The 25 by 22 1/2 inch images are printed on Arches Cover white paper. Six of these images were selected to edition. The printing of the editions is currently in progress with Chris Shepherd wiping the plates and assistance from Richard Finch, Yoko Kawazoe and Veda Rives.

**Michael Chandler**, a native of Iowa who now lives on the Hudson River in Garrison, New York, had a one week guest artist residency in February. Mr. Chandler collaborated with N.E.W. staff

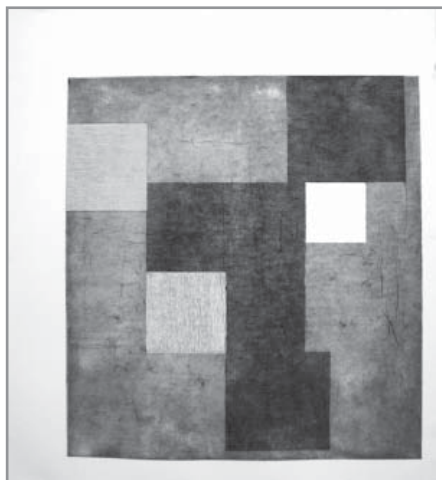


three color lithograph by Michael Chandler

members to produce a color lithograph and three black and white lithographs. The color lithograph printed on BFK Rives white paper measures 17 3/4 by 12 inches. The images were drawn by the artist using xerox toner washes on two lithographic plates and a stone. The edition of 50 was printed by Richard Finch and Veda Rives with assistance from Betsy Hamilton, Yoko Kawazoe, Meda Rives, Chris Shepherd, and Carol Simmons. Editions of 15 black and white editions on Somerset Textured paper were printed using the plate from run 2 and the stone from run 3 with the addition of hand-coloring by the artist. The third black and white lithograph was drawn by the artist using xerox toner washes on a lithographic stone and printed in an edition of 26. The image measures 7 inches by 4 1/2 inches and will be hand-colored by the artist.

## 2000 PUBLICATIONS

**Rodney Carswell**, a nationally known painter who lives and works in Chicago, Illinois, had a one-week visiting artist residency here at Normal Editions Workshop in April. This program was partially sponsored by a grant from the Illinois Arts Council, an agency of the State of Illinois. Mr. Carswell collaborated with the N.E.W. staff during his stay to produce several images and sequential compositions



untitled intaglio and woodcut with colle by Rodney Carswell

Prices are available upon request.

*Miss Froggie* (with paper variants) is a recently released print by **John Phillips**, an established Chicago artist who had a one-week visiting artist residency in January 1999. These editions are three color lithographs measuring 19 1/2 by 24 inches with paper variants on Rives BFK gray and white. The artist drew the images with Korn's Litho Crayons and gum arabic. The editions of 26 impressions (on gray paper) and 10 impressions (on white paper) were hand-printed by Richard Finch and Veda Rives with assistance from Jessica Benjamin, Jessica Gomula-Colvin, and Meda Rives. Prices are available upon request.



Miss Froggie by John Phillips

## 2000 CONTRACT PROJECTS

Two artists participated in the contract printing services available from our workshop.

**Martin Garhart**, an Ohio artist, had an intaglio edition printed. **Paul Sierra**, a Chicago artist,



Beacon by Paul Sierra



There by Martin Garhart

had a lithograph printed.

*There* by **Martin Garhart** is a black and white intaglio print utilizing a variety of techniques, including etching and engraving. The landscape image, printed in black on white

German Etching

paper, measures 7 by 4 7/8 inches. The edition of 50 was hand-printed by Richard Finch with assistance from Meda Rives and Veda Rives. **Paul Sierra's** lithograph, *Beacon* is a figurative image measuring 13 1/8" x 9 1/4". The edition of 15 was printed in black on BKF Rives, white paper by Veda Rives with assistance from Jessica Benjamin, Richard Finch, Jessica Gomula-Colvin, and Meda Rives. The artist drew these images with Korn's and Stone's brand lithographic pencils on a stone.

### GRANT AWARD 2000-2001

We are very pleased to report that the **Illinois Arts Council** has awarded a grant supporting *Rosalyn Schwartz at Illinois State University's Normal Editions Workshop*. A painter from Champaign, **Rosalyn Schwartz** is a faculty member at the University of Illinois. Rosalyn Schwartz has a BFA from Washington University, St. Louis, Missouri and an MFA from Fontbonne College, St. Louis, Missouri. Recent awards include: Millay Colony of the Arts one-month Residency, Austerlitz, New York; Arts Midwest/National Endowment for the Arts Fellowship Grant in Painting; Outstanding Faculty Award, University of Illinois; Bush Foundation Fellowship for Visual Artists, Minneapolis, Minnesota; and McKnight Foundation Fellowship in Visual Art, Minneapolis, Minnesota. The artist's one-week visiting artist residency at Normal Editions Workshop occurred in early November. Activities included a public lecture to commu-



Rosalyn Schwartz drawing on a stone at the Workshop, November 2000

nity and campus members regarding her work, artistic insights, current endeavors, and recent achievements; in addition to public presentations with demonstrations of her working methods as she explored the challenging, expressive, and creative potentials of printmaking in collaboration with the professional staff at N.E.W. to produce limited edition prints. Rosalyn Schwartz's collaboration produced a multi-color lithograph utilizing xerox toner washes.

### PRINT EXHIBITIONS AVAILABLE

**Normal Editions Workshop: Contemporary Printmaking from the Publishing Facility at Illinois Sate University** was hosted by the Robert L. Ringel Gallery at Purdue University in Indiana, from August 21 through October 7, 2000. The exhibition featured thirty framed works from the N.E.W. archives.

**Normal Editions Workshop: Selected Works on Paper** was hosted by the Foster Art Center, Peoria Art Guild from April 14 through June 3, 2000. This exhibition featured eighteen framed works selected from N.E.W.'s publications and contract printing projects.

**Contemporary Prints** was hosted by the Tweed Art Museum at the University of Minnesota, Duluth from January 18 through April 2, 2000. This exhibit contained nineteen prints co-published since 1988 by Normal Editions Workshop and University Art Galleries. As a result of this show, the Tweed Museum acquired two prints for their collection: *Study for a Farmer Fiddling with Fawns* by David Hodges and *Ecstasy* by Alex Grey.

Other exhibits available from N.E.W. include **Normal Editions Workshop: A Print Retrospective**, documenting all of the major editions published by N.E.W.; **Illinois Artists at Normal Editions Workshop**, featuring forty works by artists from Illinois; and **Normal Editions Workshop: The Intimate Print**, featuring forty prints uniformly mounted on 18" by 24" mat boards under plexiglass. Rental fees, insurance costs, and shipping charges apply. The rental fees may be applied to the purchase of impressions from the editions featured in the exhibitions. The above mentioned exhibits are listed in the ARTSTOUR 1999-2001 program of the Illinois Arts Council. Institutions in Illinois interested in hosting one or more of these exhibits may apply to the Illinois Arts Council for funding. For more information regarding this program, contact the IAC at 1-800-237-6994.

These exhibitions represent N.E.W.'s ongoing commitment to the production of visual images in collaboration with visiting artists and the distribution of these images to promote

visual dialogue with a variety of audiences.

### FUNDRAISING FOR NEW PRESSES

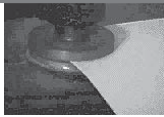
**The Press Portfolio-A Fundraising Exhibition** is in Gallery III of University Galleries in the Center for the Visual Arts Building at Illinois State University, Normal, Illinois. The exhibition runs through December 15, 2000. The show, which contains 12 framed works, is available to travel to other venues.

**The Press Portfolio** is a suite of ten original prints undertaken by faculty members in the Department of Art as a way of supporting the expansion of the Printmaking Areas with two new presses. Both Intaglio and Lithography Areas will benefit tremendously from a new press in each area. Fifteen of the suites, which are presented in portfolio, will be for sale. The participants are all active artists with extensive professional accomplishments. The portfolio is comprised of the following artists: Harold Boyd, James D. Butler, Sean Caulfield, L.J. Douglas, Richard Finch, Ray George, Gary Justis, Shona MacDonald, Meda Rives and Veda Rives. Each portfolio also includes letterpress title and colophon pages. The first five portfolios will be sold at a cost of \$1500.00, the next five for \$1800.00, and the final five at \$2000.00. The choices of imagery, media, color, and paper are those of the individual artists. The size of the paper is 15" x 20". The works include a variety



The Real Hero by Harold Boyd (woodcut)

of processes including stone and plate lithography, intaglio, collograph, woodcut, handcoloring, and colle. Printmaking students who assist-



**Normal Editions Workshop Newsletter**  
Published irregularly by  
Normal Editions Workshop  
Campus Box 5620  
Illinois State University Normal, IL 61790-5620

Normal Editions Workshop would like to thank Meda Rives and Veda Rives for their assistance in preparing this newsletter.

ed with the production of this project are Tonia Bonnell, Jacob Feldman, Betsy Hamilton, Yoko Kawazoe, Jeffrey Mitchell, Chris Shepherd, and Cynthia Wang. Donations towards the purchase of the new presses are also appreciated.

## N.E.W. AWARDS

**Dena Manley** was awarded the N.E.W. 2000-2001 Scholarship. Each spring the Art Department's scholarship committee reviews slide portfolios submitted by the art students to select winners for a variety of awards and scholarships. The N.E.W. Scholarship is open to both graduate and undergraduate art students with an emphasis in printmaking and who will be attending ISU in the following academic year.

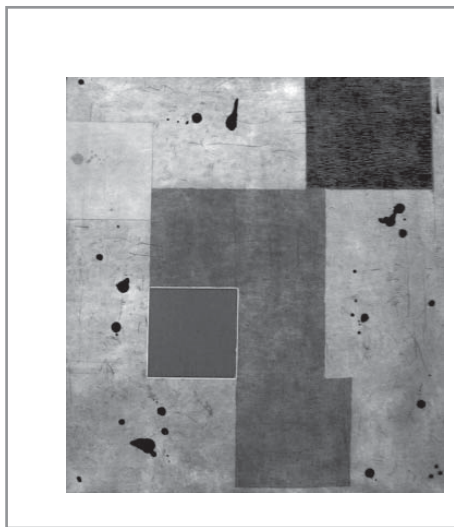
N.E.W. again sponsored two awards for printmaking at the 2000 Student Annual Exhibition. **Bradley P. Giacomini** received the Undergraduate Award for his print, *Map*, and **Jessica Gomula-Colvin** received the Graduate award for her print, *Untitled 1*.

## REPORT ON 99-00 GRANT AWARD

**Rodney Carswell: A Short-Term Artist Residency at Normal Editions Workshop** is a recent project funded in part by a grant from the Illinois Arts Council. A painter from Chicago, **Rodney Carswell** is a faculty member of the School of Art and Design, University of Illinois-Chicago who had a one-week visiting artist residency in April 2000. Activities included a public lecture regarding his work, artistic insights, current endeavors, and recent achievements; and public presentations with demonstrations of his working methods. These events were very well attended by both the general public and the University faculty, staff, and students. In addition to the public lecture and presentations, Mr. Carswell collaborated with the Normal Editions Workshop staff during his stay to produce a set of eight unique monoprints. Editions of selected images are in production at this time. See the related article on page one. We would like to take this opportunity to express our appreciation to the Illinois Arts Council for the support of this project.



Richard Finch, Rodney Carswell, and Veda Rives collaborating at the intaglio press.



untitled intaglio and woodcut with colle  
by Rodney Carswell

## SELECTED STAFF ACTIVITIES

A selected list from the 2000 exhibition records of N.E.W. staff includes **Richard Finch**: Two-Person Exhibitions: *Konstantin Chmutin and Richard Finch: Transforming the Ordinary*, Stevenson Gallery, Quincy Art Center, Quincy, IL (July 14-August 11) and *Surrealist Ties: Prints of Richard Finch and Oscar Gillespie*, Foster Arts Center, The Peoria Art Guild, Gallery I, Peoria, IL (April 14-June 3); National Juried Exhibitions: *Delta National Small Prints Exhibition*, Arkansas State University, Jonesboro, AR (November 6 - 29) (juror: Mark Pascale, Associate Curator of Prints and Drawings, The Art Institute of Chicago, Chicago, IL); **Veda M. Rives**: *Faculty Biennial*, Illinois State University, 1999; **Meda R. Rives**: Finalist Award, Artists Fellowship Program 2000, Illinois Arts Council; *Faculty Biennial*, Illinois State University, 1999; *Liturgical and Sacred Art Exhibition*, Springfield Arts Center, Springfield, IL, May 13-June 18, 2000.

## PRINTMAKERS EXHIBITION AND SALE

The 16th Annual Printmaker's Exhibition and Sale will be held on Friday, December 8th from 8 am-7 pm in rooms 127 and 129 in the Center for the Visual Arts building. All prints are original artworks by ISU students, faculty, staff, and visiting artists.

A **SILENT AUCTION** of the framed lithograph *Boy with Raised Arm* by **Sidney Goodman** will be held. The 18 1/4 x 14 inch image is a one color lithograph printed in black ink on BFK Rives paper. The minimum bid for this framed impression at the silent auction is \$300.00. The retail price of an unframed impression is \$800.00. Written bids may be



Boy with Raised Arm by Sidney Goodman

submitted anytime before or during the sale. All bids must be received by 7 p.m. on Friday, December 8th.

A **RAFFLE** of the print *Evening Landscape* by **James D. Butler** will be held. The 9 x 12 inch image is a one color lithograph printed in black ink on Arches Cover, white paper. The retail price of this print is \$50.00. **Raffle tickets are only \$1.00 each** and are available in Room 129A. All proceeds will be used to support the ISU printmaking program. Both winners will be announced at the end of the sale at 7 p.m. Participants need not be present to win.

## REPORT ON 1999 PRINTSALE

Highlights from the 15th Annual Printmaker's Exhibition and Sale which was held on December 10, 1999 include winners of the raffle and silent auction events. Alberta Newman won the raffle of *Pastiche X*, a lithograph by Ray George. Maggie Flowers won the bid for the silent auction of *Ghost Cat* by Joe Bova. The event was well attended by both campus and community supporters. The Printmaking Area would like to express appreciation to all who



Evening Landscape by James D. Butler

# Normal Editions Workshop

Professor Richard Finch, Director

Veda Rives, Associate Director

Center for the Visual Arts, Department of Art

Illinois State University

Campus Box 5620

Normal, IL 61790-5620

PRSR STD  
U.S. POSTAGE  
PAID  
ILLINOIS STATE  
UNIVERSITY

Our e-mail addresses are:

rdfinch@oratmail.cfa.ilstu.edu

vrives@oratmail.cfa.ilstu.edu



Meda Rives and Richard Finch proofing a plate at the litho press.

helped to make it a success.

## MFA DEGREE APPLICATIONS

Master of Fine Arts Degree applications in Printmaking for Fall 2001 are being accepted. Information about and applications for the degree program are available from the Department of Art. Contact Richard Finch for details. Completed applications should be received by February 1, 2001.

## PROJECT PROPOSALS WELCOME

Interested persons are encouraged to submit project proposals in writing for consideration as future projects. Also available: contract printing rates for limited editions and daily rates for monotype sessions. A cordial invitation is extended to the community and Illinois State University students, faculty and staff to stop by our facilities, room 129A in the Center for the Visual Arts building (CVA).

## FACULTY CHANGES

Congratulations to **Sean Caulfield**, Intaglio instructor, who is accepting a position as Associate Professor at the Department of Art and Design at the University of Alberta, Edmonton, Canada beginning January 1, 2001. As a result, a search to fill this vacancy in

Intaglio Printmaking is being conducted. The Department of Art at Illinois State University, Normal Illinois, is seeking an artist/intaglio printmaker to teach undergraduate and graduate courses and to supervise the intaglio program and print shop. Assistant Professor, tenure track position, to begin August 15, 2001. Salary competitive. Dependent on continued funding. MFA required. A minimum of three years teaching experience, significant exhibition record, and a knowledge of drawing, computer technology and contemporary issues in art preferred. Initial review of application will begin on January 19,

2001 and continue until position is filled. For full consideration, please send SASE, letter of application, vita, statement of teaching philosophy, examples of syllabi and/or class projects, 20 slides or other appropriate documentation of own work, 20 slides of student work, and names, addresses and telephone numbers of three references by January 19, 2001 to: Intaglio Printmaking Search Committee, Department of Art, Illinois State University, Campus Box 5620, Normal, Illinois 61790-5620. Illinois State is an Affirmative Action/Equal Opportunity Employer, encouraging diversity.

## THE 16TH ANNUAL PRINTMAKER'S EXHIBITION AND SALE

ILLINOIS STATE UNIVERSITY CENTER FOR THE VISUAL ARTS

CVA ROOMS 127 & 129

FRIDAY, DECEMBER 8TH 8A.M.-7P.M.

See related article inside for more details on this unique opportunity.