

Illinois State University

**ISU ReD: Research and eData**

---

Founding Celebration

---

2-18-1914

## 1914 Founder's Day Program of Events

Illinois State University

Follow this and additional works at: <https://ir.library.illinoisstate.edu/founding>

---

### Recommended Citation

Illinois State University, "1914 Founder's Day Program of Events" (1914). *Founding Celebration*. 248.  
<https://ir.library.illinoisstate.edu/founding/248>

This Book is brought to you for free and open access by ISU ReD: Research and eData. It has been accepted for inclusion in Founding Celebration by an authorized administrator of ISU ReD: Research and eData. For more information, please contact [ISURed@ilstu.edu](mailto:ISURed@ilstu.edu).



FOUNDERS' DAY

Illinois State Normal University

FEBRUARY EIGHTEENTH  
NINETEEN HUNDRED FOURTEEN

## **Afternoon Program**

2:00 O'CLOCK

### **DEDICATION OF THE THOMAS METCALF BILDING**

#### **High School Girls' Glee Club**

The Elementary Training School of  
Mr. Metcalf's Day HON. JOSEPH CARTER

The Old High School PROF. H. J. BARTON

#### **Song—Third and Fourth Grades**

The Naming of Our Bilding WAYNE S. MOORE

#### **Lincoln's Gettysburg Address— Fifth and Sixth Grades**

#### **Drill—First and Second Grades**

The Legislativ Phase of the Training-  
School Problem HON. FRANK H. FUNK

#### **Violin Solo—Arthur Drummet**

The Function and Organization of the  
Training School PRES. DAVID FELMLEY

#### **Song—Seventh and Eighth Grades**

The Thomas Metcalf School and the Servis  
It Should Render SUPT. FRANCIS BLAIR

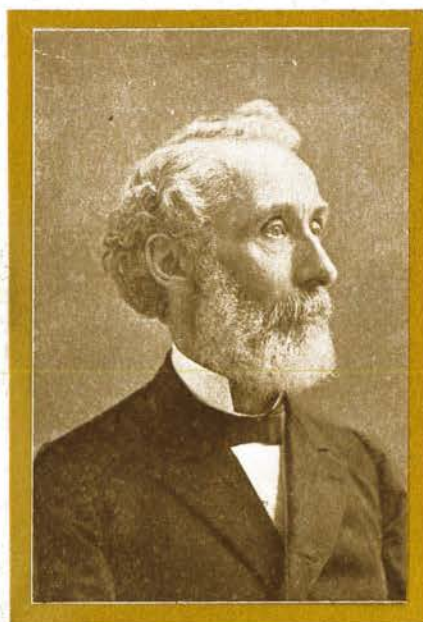
#### **High School Chorus**

es

### **SCHOOL EXHIBIT**

TRAINING SCHOOL

4:00 O'CLOCK



## Evening Program

Reception - - 7:00 O'CLOCK



8:00 O'CLOCK

THOMAS METCALF

### Boys' Glee Club

The Scholar and Teacher PROF. CHAS. DeGARMO

The Critic Teacher PROF. NATHAN HARVEY

Vocal Duet—Miss Westhoff, Mr. Carr

The Exemplification of Certain Funda-  
mental Qualities MRS. LIDA McMURRY

The Citizen . . . PROF. HENRY McCORMICK

### Girls' Glee Club

The Man PRES. JOHN W. COOK

83-10-310

