

Illinois State University

ISU ReD: Research and eData

OpenLine Newsletter

Civil Service Council

2-17-2004

OpenLine Newsletter, February 17, 2004

Civil Service Council
Illinois State University

Follow this and additional works at: <https://ir.library.illinoisstate.edu/oln>

Recommended Citation

Civil Service Council, "OpenLine Newsletter, February 17, 2004" (2004). *OpenLine Newsletter*. 141.
<https://ir.library.illinoisstate.edu/oln/141>

This Book is brought to you for free and open access by the Civil Service Council at ISU ReD: Research and eData. It has been accepted for inclusion in OpenLine Newsletter by an authorized administrator of ISU ReD: Research and eData. For more information, please contact ISUReD@ilstu.edu.

OpenLine

OpenLine is published monthly by the Civil Service Council of Illinois State University, Campus Box 1300, Normal, IL 61790-1300.

FEBRUARY 17, 2004

VOLUME XXVIII, NUMBER 8

DATES TO REMEMBER

February 25.....Next classified ad deadline
March 2**Council meeting**
 March 2.....Next *OpenLine* article deadline
 March 6-14 Spring Break
 March 17..... St. Patrick's Day
March 16**Council meeting**
 March 20..... Spring begins

INSIDE

Recreation Services & U Golf Course p. 2
 University Policies/Procedures p. 2
 Campus Corner p. 2
 Classified Advertisements p. 2
 Conditions for Submitting Ads p. 2
 Service Awards p. 3
 Potpourri p. 3
 Congratulations Graduates p. 3
 Wellness Program p. 4
 History Mystery Answer p. 4
 Contact Us p. 4

STAFF

EDITOR Pam Burress
 COPY EDITOR Narry Kim
 COUNCIL LIAISON Vicki Bryan

FRIVOLOUS FACTS

Spiders never spin webs in structures made of chestnut wood. That is why so many European chateaux were built with chestnut beams – spider webs on a 50-foot beamed ceiling can be difficult to clean.

[Source: www.coolquiz.com/trivia/facts]

Quick Quote

-- SAM WALTON

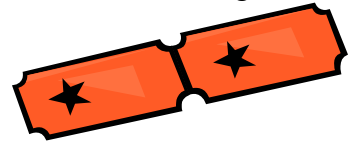
"Outstanding leaders go out of their way to boost the self-esteem of their personnel. If people believe in themselves, it's amazing what they can accomplish. High expectations are the key to everything."

CIVIL SERVICE COUNCIL RAFFLE

--MARTHA BURK

Watch for the Civil Service Council Raffle coming soon! The Council holds this raffle every year and the proceeds go to benefit the Civil Service Dependents Scholarship Fund.

Tickets will cost \$1 for one ticket or \$5 for six and should be available sometime in mid-March. The Council will be selling them at the Annual AP/CS Awards Ceremony on Wednesday, April 7, 2004 from 1 to 3 p.m. Tickets can also be purchased from any Council member.



The first raffle prize this year will be a digital camera and many other items will be given away. The drawing will take place on May 18 at the Civil Service Council meeting. You need not be present to win. This is your chance to win a really great prize and to help some very deserving students in the bargain!

BIENNIAL CONFERENCE FOR WOMEN

--SUSAN STILLWELL

The next Biennial Conference for Women will be held on April 8 and 9, 2004 at the University of Illinois at Urbana-Champaign Assembly Hall.

Registration and information about speakers, schedules, ticket prices, seating and availability is located on the conference Web site (www.theconferenceforwomen.com)



NOTE: please do not count on a university sponsored bus as your only means of transportation to the event. Contact the Human Resources office at 8-8311 if you are interested in taking a bus if it becomes available. The decision to offer bus transportation will be made closer to the date of the Conference, based on interest from

ticket holders and on the cost that is passed on to the riders.

HISTORY MYSTERY

What campus building opened in 1989 and contains 24 teflon-coated, fiberglass fabric panels for the roof?

[Answer on back page.]

RECREATION SERVICES AND UNIVERSITY GOLF COURSE

--JOHN STRATMAN

Leisure University CLASSES	Class Dates	Sign-up Ends
Backpacking \$15.00	Mar. 2	Feb. 26

Spaces for these classes are limited so sign up now. You may register by phone with a credit card or walk in at the Student Recreation Building, 500 N. Beech St., or at the Outdoor Store at 220 N. Main St. For more information, prices or to register, please call 438-PLAY.

UNIVERSITY POLICIES / PROCEDURES

8.2.1 APPROPRIATE USE POLICY

1.0 Introduction

The purpose of this policy is to establish the appropriate use of Illinois State University's computing and telecommunication networks, computing equipment, and technology resources. These resources are owned by the University and are provided primarily to support the academic and administrative functions of the University. Federal and state law as well as University policies and procedures govern the use of this equipment and technologies.

Please visit www.policy.ilstu.edu for more information on this topic.

CAMPUS CORNER

--BARB DALLINGER

Student life in the 1920s included specific guidelines and rules. No ink was to be used in the study hall except in fountain pens. Study rooms at home were to be kept at 68 degrees which was deemed to be the best temperature for learning. Each student was required to have a study lamp with a 40 to 60 watt bulb, the light deemed best to study by. And most importantly, each student was required to take three baths per week.



CLASSIFIED ADVERTISEMENTS

Services Offered:

- Ad removed for Web display as per the Illinois State University policy governing commerce on the Web (8.2.10).

“Introductory” Advertising Rates: Auto \$5, Personal Service \$5, all other categories \$2.

To submit an ad: Complete the Classified Ad Submission Form. Send or deliver the form and payment to Pat Schnitker, 4040 Graduate School, Hovey 310. Ad must be received by the 25th of the month (i.e. October 25 for November OpenLine)

OpenLine Classified Ad Submission Form

All information must be printed clearly.

First and Last name: _____

Home phone: (_____) _____ - _____

ISU phone: 8-_____

Best time to reach you at your home phone: _____

Email: _____

Campus Box/Dept: _____

Check one category:

- | | |
|-----------------------------------------|-------------------------------------------|
| <input type="checkbox"/> Free Items | <input type="checkbox"/> Personal Service |
| <input type="checkbox"/> For Sale-Auto | <input type="checkbox"/> Wanted |
| <input type="checkbox"/> For Sale-Other | |

ONE word per box. 20 words or less.

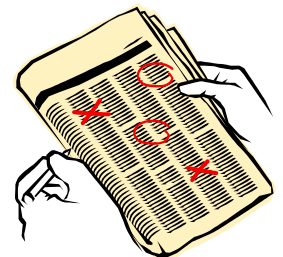
Abbreviations

AC = Air Conditioning	GC = Good Condition	PW = Power Windows
AT = Auto Transmission	Lrg = Large	RD = Rear Defroster
BR = Bedroom	LR = Living Room	Rm = Room
CC = Cruise Control	Mos = Months	S6 = Sleeps/Seats 6
DR = Dining Room	MR = Moon Roof	Sz = Size
EC = Excellent Condition	9P = 9 Passenger	SR = Sun Roof
EM = Email	PL = Power Locks	W&D = Washer and Dryer
FM = Family Room	PS = Power Seats	

*SEND THIS COMPLETED FORM AND PAYMENT TO
PAT SCHNITKER, 4040 GRADUATE SCHOOL.*

CONDITIONS FOR SUBMITTING ADS

Only Illinois State University employees and retirees may submit ads. There is a limit of ONE ad per employee or retiree, per issue. The ad must be resubmitted for each issue it is run. The appropriate fee must be included with each submission form. Ads must be submitted on the Ad Submission Form, located in the OpenLine or on the Council website, photocopies are acceptable. No ads will be accepted over the telephone. One item or service allowed per submission form. Ads must be 20 words or less. Ads will not be accepted for travel, credit cards, real estate, financial, .com, nude, personals, and firearms to stay within accepted University practices and statutes. Ads will appear in the next OpenLine, space permitting. Any ad not run due to space limitations will be held and appear in the following OpenLine; if you wish to cancel the ad the individual who submitted the ad must contact Pat Schnitker. Refunds will only be given if the ad was held for the following edition and canceled prior to the submission deadline for that issue. Only your first name, home phone number, and email will appear in the ad, no ISU numbers will be published. OpenLine and the Civil Service Council are not responsible for any item or service advertised. The OpenLine staff and Civil Service Council reserves the right to restrict, edit or refuse any advertisement.



SERVICE AWARDS

--TOM FOWLES

Service Award information is provided by the Human Resources Office.

30 YEARS

- ❖ Charles Fleming, 9000 Office of Energy Management, 2/4/1974

25 YEARS

- ❖ Marilyn Mae Engel, 2610 Food Service, 2/5/1979
- ❖ Michael Everett Lovell, 8900 Milner Library, 2/28/1979
- ❖ Teresa Lyn Raney, 2202 University Registrar, 2/26/1979
- ❖ Thomas L. Schmitt, 9000 Facilities Management, 2/12/1979

20 YEARS

- ❖ Bonnie C. Devore, 9240 University Police, 2/6/1984
- ❖ Mark Allen Hill, 4480 Communication, 2/13/1984
- ❖ Sandra S. Hursey, 9100 Facilities Management, 2/6/1984

15 YEARS

- ❖ A. C. Beale, 2600 University Housing Serv, 2/20/1989
- ❖ Ronald L. Devine, 9100 Facilities Management, 2/1/1989
- ❖ Suzanne Ferrara, 4620 Psychology, 2/14/1989
- ❖ Mary Etta Witham, 2640 Bone Student Center, 2/13/1989

10 YEARS

- ❖ Ernest S. Gonzalez, 9000 Facilities Management, 2/7/1994
- ❖ John David Goodman, 1320 Environmental Health & Safety, 2/22/1994
- ❖ Donald Ross Kunde, 1320 Environmental Health & Safety, 2/28/1994
- ❖ Marilyn Jo Mansell, 8900 Milner Library, 2/7/1994
- ❖ Steven Lee Menken, 3500 Telecommunications, 2/1/1994
- ❖ Carl V. Thacker Jr., 5660 School Of Music, 2/16/1994
- ❖ Joseph Matthew Wolf, 9000 Facilities Management, 2/1/1994

POTPOURRI

--DIANNE LIEBENSTEIN

SYMPATHY – OUR SINCEREST SYMPATHY

- Eric Klawitter, Facilities Management, on the death of his sister, Kari A. Johnson, November 25, 2003.
- Pamela Miller, School of Music, on the death of her mother, Gwendolyn Miller, December 4, 2003.
- Marge Hewitt, Office of Human Resources, on the death of her mother-in-law Doris Hewitt, December 6, 2003.
- Tenna Webb, Mennonite College of Nursing, on the death of her mother-in-law Marilyn Jane Webb, December 27, 2003.
- Jan Brank, Special Olympics Illinois, on the death of her father, Don Pomeranke, December 31, 2003.
- Randy Brank, Facilities Management, on the death of his father-in-law, Don Pomeranke, December 31, 2003.
- Jim Fisk, Facilities Management, on the death of his mother, on January 2, 2004.
- Abel Hernandez, Facilities Management, on the death of his father, Juan Hernandez, January 9, 2004
- Georgia Martin, Facilities Planning, on the death of her father, George Everson, January 11, 2004.
- Allen Love, Facilities Management, on the death of his mother, Roberta Mae Love, January 11, 2004.
- Opal Love, Facilities Management, on the death of her mother-in-law, Roberta Mae Love, January 11, 2004.
- Gary Simpkins, Facilities Management, on the death of his father, Merle Simpkins, January 28, 2004.

[Continued in next column...]

[Potpourri continued...]

RETIREMENTS

November

- None reported

December

- E. Lucille Baker, Campus Dining Services
- George Edward Carter, Campus Dining Services
- Iva C. Coppenbarger, Educ. Admin. & Foundations
- Mildred Irene Danner, Campus Dining Services
- Marilyn Ruth Edwards, Milner Library
- Ronald J. Henderson, Facilities Management
- Carol M. Krueger, Registrar
- Eileen V. Lancaster, Comptrollers Office
- Janet L. Litwiller, Office of Human Resources
- Dona J. Meador, English
- Sharon R. Merrill, Health Services
- Susan E. Nolan, Financial Aid Office
- Dorothy A. Peasley, Campus Dining Services
- Patricia K. Shupe, Bone Student Center
- Bill E. Tanner, Facilities Management
- Thelma J. Wickenhauser, College of Business/Support

RESIGNATIONS

November

- Suzanne M. Apple, Thomas Metcalf School
- Anthony J. Brandt, Campus Dining Services

December

- Dennis A. Didway, Campus Dining Services

NEW EMPLOYEES –WELCOME

November

- Robert T. Dwyer, Admissions
- Melissa K. Harms, University Police
- Ruby E. Johnson, Dean of Education

December

- Jeffrey A. Bender, Agriculture
- Russell L. Elmore, Dean of Graduate School
- Erik B. Hanks, Health Science

PROMOTIONS—TIP OF THE HAT TO YOU

November

- Michele Renee Wilson, Accountant II, Comptrollers Office

December

- Elizabeth A. Banks, Accountant I, Comptrollers Office
- Alyce M. Heineman, Admissions/Records Officer II, Registrar
- Christine M. Knuth, Admissions/Records Officer II, Registrar
- Jacqueline D. Marshall, Customer Service Rep. II, Assistant to VP-University Advancement

Your help in providing Potpourri information is needed and appreciated. Please feel free to contact Dianne Liebenstein by phone at 438-8311 or by e-mail (dbliebe@ilstu.edu) to report births, marriages, or deaths of immediate family members.

CONGRATULATIONS GRADUATES

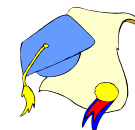
--ELAINE THOENNES

DECEMBER 2003--DEGREES OBTAINED

Congratulations to the following Civil Service staff members who have received a bachelor of science degree at the end of last semester:

- Marie Gillibrand from Financial Aid Office; degree in General Finance
- Debra Wylie from Extended University; degree in Multidisciplinary Studies
- Kathleen Webster from Financial Aid Office; degree in Public Relations

Congratulations to each of you on your accomplishment.



WELLNESS

--NIKKI GEGEL

Employee Fitness Program

Spring fitness program activities began January 12, but it's not too late to enroll. We are offering badminton, fitness lab, land aerobics, lap swimming, water classes, T'ai Chi, table tennis and yoga. Registration forms are located on our website (www.hr.ilstu.edu/wellness) or contact Brandi Rock at 438-7003.

Understanding Children's Temperament

2/17 from Noon – 1 p.m. in Degarmo 551

Blood Drive

2/26 from 10 a.m. to 3:30 p.m. in the BBC Activity Room

Family Swim

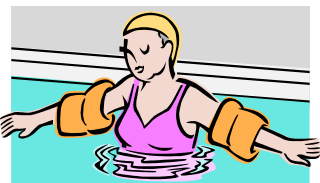
2/28, 3/20, 4/4 and 4/25 from 1 to 3 p.m. at Metcalf Pool

Strength Series

3/3 & 3/17 from Noon to 1 p.m. in Degarmo 551

Please contact the Human Resources Customer Service Center at 438-8311 to register for any of the above sessions. For further information visit our Web site at

www.hr.ilstu.edu/wellness
or contact Nikki Gegel at
438-8845.



HISTORY MYSTERY ANSWER

Redbird Arena seats 10,500 people and is home to Illinois State basketball, both men's and women's. The Illinois State's women's volleyball team also plays here. Redbird Arena hosts many entertainment events such as concerts, outdoor shows, and antique and craft shows. It is the second largest university arena in the state. It has a portable wooden floor placed over a concrete deck



with lower seating which can be folded back, with special lighting arrangements for stage productions.

CONTACT US

Please feel free to contact any Council member if you have questions, comments, or ideas so that we may better serve you. Any campus activities or information that would be relevant to Civil Service personnel can also be submitted.

Send information to the Council officers (cscouncil@ilstu.edu), to the *OpenLine* editor, Pam Burress (paburre@ilstu.edu), to our Council liaison, Vicki Bryan (vlbryan@ilstu.edu), or to any other Council member prior to the deadline (posted in the "Dates To Remember" column on page 1).

