

Illinois State University

ISU ReD: Research and eData

Alpha Beta Alpha

Registered Student Organizations

Spring 1973

The Alphabet, Spring 1973

Alpha Beta Alpha

Follow this and additional works at: <https://ir.library.illinoisstate.edu/abarso>



Part of the [Library and Information Science Commons](#)

Recommended Citation

"The Alphabet, Spring 1973" (1973). *Alpha Beta Alpha*. 6.
<https://ir.library.illinoisstate.edu/abarso/6>

This Article is brought to you for free and open access by the Registered Student Organizations at ISU ReD: Research and eData. It has been accepted for inclusion in Alpha Beta Alpha by an authorized administrator of ISU ReD: Research and eData. For more information, please contact ISUReD@ilstu.edu.

FLORENCE STATE UNIVERSITY

Florence, Alabama, the largest of the four cities which comprise the metropolitan Muscle Shoals area which is geographically situated in the state's northwest corner on the Tennessee River, is the home of Florence State University.

A small, friendly campus with approximately 3200 students, Florence State University is an institution where tradition blends harmoniously with progress. Recently the school paused briefly to glance backwards at its accomplishments before looking forward to new growth and direction under the guidance of the new president - - Dr. Robert M. Guillot. December 5, 1972 was the day of celebration not only for the observance of the school's 100th year of service to students and to community, but also, it was the day for the inauguration of Dr. Guillot, who was installed as the institution's 10th president by the Honorable George C. Wallace - - Governor of Alabama. The theme for this historic, momentous occasion was FLORENCE STATE'S SECOND HUNDRED YEARS, which is characteristic of the way the school combines the past with the present and the future.

Even the physical appearance of campus buildings contribute to the combination of the old and the new. Wesleyan Hall, the oldest building on campus, dates back to 1855 and presently houses the library media classroom and laboratory among other departments. In contrast to Wesleyan Hall, there is Flowers Hall, home of the Florence State Lions, which was completed in 1972.

Dr. Guillot energetically leads his faculty as they strive to make Florence State University a school where the emphasis is on the student. It is their aim to provide each student with the opportunities necessary to prepare him for a professionally and socially successful life.

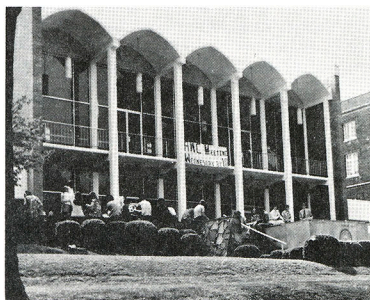
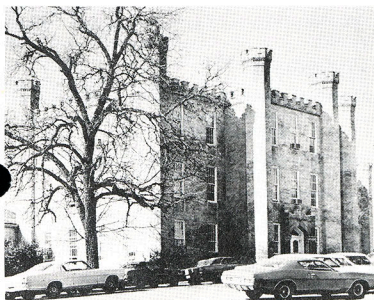
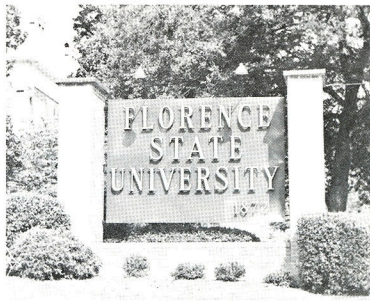
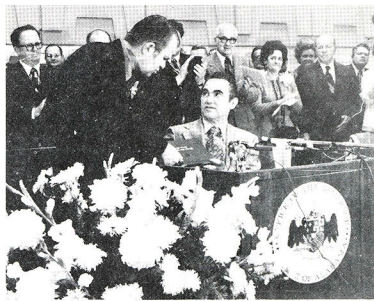
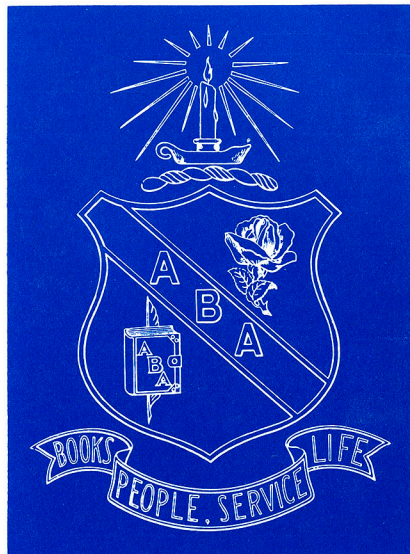
Students who are interested in librarianship can better equip themselves for successful careers through membership in the school's chapter of Alpha Beta Alpha, which was installed in November, 1963. Under the enthusiastic leadership of our 1972 - 1973 officers: Connie Naves, Elkmont, Alabama, President; Ann Mitchell, Florence, Alabama, Secretary-Treasurer; and Barbara Malone, Tusculumbia, Alabama, Reporter-Historian, Alpha Epsilon chapter is enjoying a year of involvement.

The year began with a "Get Acquainted" party at which time the chapter was officially introduced to the new sponsor - - Miss Mila Key, Instructor in Library Science in the Department of Education, who came to Florence in June, 1972 from Nashville, Tennessee, where she spent a year studying for an EdS in Library Science at George Peabody College for Teachers. Other interesting, informative programs have included a book talk by Mrs. Lois Henderson, library supervisor for the Florence City Schools; a Christmas story presented by Miss Fanny Schmitt, retired Associate Professor of Library Science; and the discussion of an author's relationship with a publisher, given by Dr. Thomas Ott of the Florence State History Department who recently authored THE HAITIAN REVOLUTION. Highlight of the year's activities will be the annual spring banquet.

Involvement extends beyond chapter meetings. Alpha Beta Alpha's entry in the Homecoming parade depicted the theme "You've come a long way, Baby" to show how the librarian's image has changed and how libraries are changing from books to media. During the annual fall workshop of Alabama Instructional Media Association, (continued on page 5)

The Alphabet

Volume XVIII Spring 1973 Number 2



BACK IN 1945 . . .

As a flower begins as a seed and grows into a unique blossom, so has the Fraternity of Alpha Beta Alpha. On October 30, 1945, twenty-two Library Science students and eight faculty members of the Northwestern State College of Louisiana held a banquet at the Private Dining Room of the Student Center. At the conclusion of the dinner, they decided to organize a Library Science Club on the campus, with a view towards the development of a national fraternity. Dorothy Mae Moses was chosen as Chairman and Agnes Clark as Secretary of a temporary "Committee of the Whole" to prepare for the organization of the club.

On January 10, 1946, this group of students and librarians met again, adopted a constitution, and formerly organized the "Northwestern State College Library Club." Azoline Stevens was elected its first President. Mrs. Lucille Carahan was chosen as Sponsor and Mr. Eugene P. Watson as Advisor. It was not until May 3, 1950 that Alpha Beta Alpha (Amerikaniki Bibliophylaken Athelophotes - - American Libraries' Fraternity) was born. Immediately the Sharlie E. Russel Library Club, formerly the Northwestern State Library College Library Club, petitioned to become a member. Thus, the first chapter, Alpha was formed. Next, the Mississippi State College for Women applied and was accepted, becoming Beta.

Shortly afterwards, the Vol. 1 No. 1; Fall, 1950, issue of the semi-annual official magazine of the Fraternity, *The Alphabet*, appeared. Sallie Harper was the first editor.

Indiana State Teachers College was installed as Gamma Chapter on February 8, 1952. Also in 1952, the First Biennial National Convention was held on March 15-16. National President Jo Ann Scott, of Beta, presided. The year 1953 saw a rapid growth in the Fraternity with six new chapters being established. They were: Delta at the University of Alabama; Epsilon, Murray State College, Murray, Kentucky; Zeta, Concord College at Athens, West Virginia; Eta at Texas State College for Women; Theta at Arizona State College; and Iota, San Jose State College, San Jose, California.

The Second Biennial National Convention was held on March 19-20, 1954, at Murray State College, Murray, Kentucky, with Epsilon as host Chapter. Also in 1954, Kappa Chapter was installed at State Teachers College, Millersville,

EXECUTIVE SECRETARY'S COLUMN

With the coming of spring our thoughts turn to regional meetings, the National Founders Day and next years convention.

Miss Speer gave us good advice on "How to proceed to plan for a regional meeting" in one of her chapter letters in 1963. I am repeating it now for those chapters giving the idea serious consideration.

1. Select a Saturday in the spring which is most satisfactory for your chapter to serve as host
2. Plan a program in which a number of persons can participate.
3. Write chapters in your area inviting them to join you for a day of meeting.
4. Ask them to be responsible for some part of the program.
5. Send a reservation blank for them to fill out for meals.

National Founders Day is May 3rd. How will your chapter mark this special event this year?

Our next biennial National Convention will be held in 1974 and it is essential that we begin to plan for that meeting now. We need a host chapter for the convention. The chapters that would like to serve in this capacity should write to National and make their bid for the Eleventh National Convention of Alpha Beta Alpha. The bid should be accompanied by a statement of facilities available, probably an approximate room and meal cost and available transportation facilities. The sponsor and the administration should have approved of the plan before the bid is written.

There are several chapters that have not sent their 1972 dues to National. They are: Beta, Delta, Epsilon, Lambda, Nu, Omicron, Chi, Psi, Alpha Delta, Alpha Mu, and Alpha Sigma.

National hopes there will be several regional meetings this spring and a large group at the convention next year.

Fraternally yours,
Jean A. Elliott
National Executive Secretary

EDITOR'S CORNER

WHO ARE OUR NATIONAL OFFICERS? I understood from our national convention that we were to vote on these and the constitutional changes. So far I have not received any word from headquarters. Have you? I printed for you the candidates' information which they sent me so that you could have the proper data to vote. Where are the ballots? It is almost too late, the national convention is slated for a year from now. What's going to happen then if there are not any officers to run it? DOES ANYBODY CARE? It does not seem like anyone does to me. Look at the *Alphabet*, your communication, except for the few chapters which sent in articles and chapter news there was no response. It takes everybody to make an organization.

Pennsylvania. Just two days later, Lambda was installed at Louisiana State University, Baton Rouge.

Three new chapters were added to the roll in 1955-56. Mu Chapter was installed at Illinois State Normal University, Normal, Illinois; Nu at Marshall College, Huntington, West Virginia; and Si at Iowa State Teachers College, Cedar Falls, Iowa. The Third National Convention was scheduled to be held at the University of Alabama on April 5-6 with Delta as host Chapter, but was faced with a last minute cancellation, which was beyond the control of the University and the Fraternity.

Omicron Chapter was installed at Florida A. & M. University on April 5, 1957. Eight days later, Pi Chapter at Our Lady of the Lake College, San Antonio, Texas came into existence. Also in 1957 the National Convention was held at Indiana State Teachers College at Terra Haute. During this April 26-27 meeting, Gamma served as the host Chapter.

During the year 1957-58, three chapters were added; Rho Chapter at State Teachers College, Kutztown, Pennsylvania; Sigma at Western Michigan University, Kalamazoo; and Tau Chapter at Northern Illinois University, DeKalb, also during this year, *The Alphabet* changed its publication schedule from a semi-annual basis to three issues per year. In the beginning of the next school year, Upsilon Chapter was installed at Shepherd College, Shepherdstown, West Virginia.

The Fourth National Convention was held at Illinois State Normal University, Normal, Illinois, on April 24-25, 1959, with Mu Chapter serving as host. National President Patsy Teague presided.

Winter and Spring, 1960, witnessed the addition of three new chapters. On January 16, Phi Chapter was installed at Central Michigan University; Chi Chapter at North Texas State College was installed on March 31; and on May 22, Psi Chapter was installed on the campus of Southeast Missouri State College Cape Girardeau.

In accordance with his announcement made at the 1959 Convention, Executive Secretary Dr. Eugene P. Watson retired from the position he had held for a decade. Miss Eunice Speer, of Mu Chapter, was elected to take over the Executive Secretaryship, effective November 1, 1960, thus transferring the National Headquarters of the Fraternity to the campus of Illinois State Normal University, Normal, Illinois. Soon after Miss Speer took office, Omega Chapter was installed at the University of Tennessee, Knoxville.

In April of 1961 the Fifth Biennial Convention was held at Millersville State College, Millersville, Pennsylvania. Six new chapters had joined the Fraternity since the last convention. Also in 1961, Madison College, Harrisonburg, Virginia was installed as Alpha Alpha Chapter and Francis T. Nicholls
(continued on column 2, page 3)

ALPHA BETA ALPHA

Financial Report

September 1, 1972 - January 31, 1973

Balance on hand August 31, 1972	\$8,217.40
Total income	1,145.25
Total credit	9,362.65
Total expenditures	523.44
Balance at end of January 31, 1973	\$8,839.21

THE STAFF

Carol Sue Davis - - - - - Cover Story
Gail Hornbeck - - - - - Business Page
Judy Inman - - - - - On Campus
Melody Trosper - - - - - Chapter News
Susan Dibert - - - - - Editor
Clarica Williams - - - - - Sponsor

THE MEDICAL LIBRARIAN

Have you considered becoming a medical librarian? The doctor, the research scientist, the student - each of these has a special and urgent need for the very latest information in his field. The Medical Librarian is the specialist who bridges the gap between the scientist and this information.

A medical library career offers the opportunity to enter and serve in the rapidly changing and ever challenging field of medicine and its allied sciences. The reader and the medical librarian work together in such places as medical, dental, nursing, pharmacy, and veterinary schools; pharmaceutical houses; research centers; public health laboratories; medical societies; and hospitals.

My point of emphasis will focus on the librarian in the hospital. Like every other kind of organization, the hospital requires, for information and research, the services of a good library. The modern hospital usually has more than one type of library. One meets the needs of the hospital's professional staff and one meets the needs of the patient's. These libraries may be separately administered or they may be under the direction of one chief librarian, with assistants in the several services.

The medical librarian has a responsibility for developing library service to meet the requirements of the hospital's medical program. The selection of books, periodicals, and other library material is of key importance, and the librarian often works with an advisory committee of staff doctors. Much of the work of the library consists of reference service for medical staff, often involving intensive search of the literature, and frequently including the preparation of bibliographies.

The librarian of the Patient's Library is concerned with meeting the reading needs of individual patients. This includes such activities as visiting newly admitted patients to become acquainted with their interests, providing book cart service, and developing programs of interest within the library for ambulatory patients. The librarian of the patients library is a vital part of the rehabilitation team, and his efforts are coordinated with those of the other therapy departments of the hospital.

Today, the consensus is that the best preparation for medical librarianship includes an undergraduate degree with a good general liberal arts background, with emphasis on the humanities, including literature and foreign language, as well as the biological and behavioral sciences.

The next step in training of the medical librarian is a post-graduate's degree, Master of Science or Master of Arts degree in librarianship, from any of the 42 schools in the United States and three in Canada accredited by the American Library Association. The medical librarian must include in his work for the degree a special course in medical librarianship in order to meet the certification requirements established by the Medical Library Association. There should be emphasis within the Master's program on the literature of science, the technique of literature searching, audio-visual materials,

and the organization and administration of special libraries. Usually two semesters plus a summer session, or four quarters, are required to complete the requirements for the Master's Degree.

It is generally conceded that there is a lack of balance of supply and demand for professional librarians. According to Frarly and Rosenstein, who have been studying the opportunities in librarianship for a number of years, the library schools report 43,600 vacancies registered in 1968. In this same year, there were 4,625 librarians graduated in the degree program. Of this group, only 92 entered the medical library field. The President's Commission on Heart Disease, Cancer and Stroke, Subcommittee on Facilities, Program for Developing Medical Libraries, reports that there is an immediate need for an additional 3,200 medical librarians.

The medical librarian must be a person with a strong desire to be of service, a warm regard for other people, considerable physical stamina, a sense of humor and proportion, and the ability to work effectively with all kinds of people, often under pressure of time and emergency.

"Reading is the best medicine for a sick man, the best music for a sad man, the best counsel for a desperate man, the best comfort for one afflicted."

John Florio, 1597

Write to the American Library Association for additional information on library schools, scholarships, and the various types of libraries and library services.

American Library Association,
Office for Recruitment
50 East Huron Street
Chicago, Illinois 60611

or

Medical Library Association
919 North Michigan Avenue
Chicago, Illinois 60611

Article by

Eta Chapter (ABA)
Texas Woman's Univ.
Denton, Texas 76204

Back In 1945 . . . (continued from page 2)

State College, Thibodaux, Louisiana was installed as Alpha Beta.

Only one chapter was added to the roster in 1962. It was Alpha Gamma, located at Morehead State University, Morehead, Kentucky.

The National Convention was hosted by Xi Chapter at State College of Iowa, Cedar Falls, Iowa on April 26-27, 1963. With the installation of two new chapters in the Fall of 1963 ABA increased its membership to twenty nine. Alpha Delta Chapter in Stillwater, Oklahoma, Oklahoma State University, was initiated on October 17, 1963 and Alpha Epsilon, Florence State University, Alabama, was installed on November 20, 1963.

On February 29, 1964, the Fraternity suffered a great loss in the death of its founder, Dr. Eugene P. Watson. In memory of Dr. Watson, the Eugene P. Watson Memorial Scholarship Fund was established.

In the Fall of 1964 we saw the beginning of Alpha Beta Alpha's fifteenth year and the Seventh National Convention. Eta Chapter was chosen as the host for the event on May 6-8, 1965. On May 14, 1965, Alpha Zeta Chapter, Shippensburg State

College, Pennsylvania, was installed. In the Fall of 1965, the National Headquarters moved from Normal, Illinois to Millersville, Pennsylvania, where Miss Coral Melson assumed the Executive Secretaryship.

During 1966 and 1967 two more chapters were added. They were Alpha Theta, Louisiana Polytechnic Institute, Ruston and Alpha Eta, East Carolina University, Greenville, North Carolina.

Once again, the Biennial Convention was delayed a year, so that on the eighteenth anniversary of the Fraternity, the Eighth National Alpha Beta Alpha Convention was held on the Campus of Illinois State University, Normal, Illinois on April 26-27 with Mu Chapter as host. Two chapters were installed during this year. They were: Alpha Iota at Glasboro State College, Glasboro, New Jersey and Alpha Kappa at Central State College, Edmond, Oklahoma.

During the years 1966-68, Miss Coral Melson was Executive Secretary. Following her retirement, she was succeeded by Miss Jean A. Elliott, Upsilon Chapter. Miss Elliott is the current Executive Secretary. Thus in eighteen years the National Office had moved from Louisiana to Illinois to Pennsylvania and now to West Virginia.

Five new chapters were added in 1969. They were Alpha Lambda, Edinboro State College, Marysville, Missouri; Alpha Nu, Radford College, Virginia; Alpha Xi at Eastern Illinois University, Charleston, Illinois; and Alpha Omicron at West Virginia Wesleyan College, Buckhannon, West Virginia.

The Ninth National Convention of Alpha Beta Alpha was held at Oklahoma State University in Stillwater, Oklahoma, April 10-11, 1970, with Alpha Delta Chapter as host. The theme for the convention was "The Brave New World of Books, People, Service, Life." National President James R. Hamilton, Gamma, presided over the activities.

There were 5 chapters installed in 1970. They were: Alpha Pi, Mansfield S. C., Mansfield, Pa.; Alpha Sigma, Sam Houston S. C., Huntsville, Tex.; Alpha Rho, Austin Peay S. U., Clarksville, Tenn.; Alpha Tau, Slippery Rock S. C., Slippery Rock, Pa.; and Alpha Upsilon, S. C. of Ark., Conway, Ark.

Linda Ward, Beta, became the new Natl. Pres. and Sally Sorrell, Beta the Natl. V-Pres. One Chapter was installed during their term. It was Alpha Phi, Jackson S. C., Jackson, Mississippi, on May 13, 1971.

On May 3rd, 1971, Alpha Beta Alpha became of age because it had reached its 21st birthday. The Fraternity had grown from one chapter in 1950 to forty-four during these years. It had had Nine National Conventions and it was preparing for its Tenth and chapters were still being added.

Alpha Chi became the 45th chapter. It was installed on April 8, 1972 at the Univ. of Wisconsin, Whitewater. Just 13 days later, the Tenth National Convention was held at Murray S. C. on April 21-22. After that, on May 6, the latest chapter of ABA was installed. It was Alpha Psi at Western Ill. U., Macomb.

As Alpha Beta Alpha goes into its twenty-fourth year, it can look back upon an illustrious past with many of its early alumni serving in positions of importance throughout the United States and with a large contingent of new members ready to meet the challenge of "Books, People, Service, Life." - Mu Chapter, Normal, Illinois

Chapter News

DEDICATION OF NEW ADDITION TO LIBRARY

ALPHA MICRON CHAPTER of Alpha Beta Alpha assisted in the dedication of the new addition to the Annie Merner Pfeiffer Library on Friday, October 20, 1972. With the new addition and added facilities, the library is better equipped to serve the needs of the faculty and students of West Virginia Wesleyan College. In addition to new blue carpeting, more tables, chairs, comfortable seating, pinwheel carrels sufficient for four students each, and air conditioning, make the atmosphere of the building more conducive to studying. A coin-operated xerox machine and a reader printer which xeroxes microfilm have also been added. The card catalog has been extended to 480 drawers. The total hours the library is open per week has been extended to 90. The inconveniences of dirt and moving have proved to be well worth the patience of the library staff, faculty, and students. We would be happy to give visitors a tour of our new addition.

PROGRESSIVE DINNER

Alpha Beta Alpha, Alpha Lambda Chapter of Edinboro State College is anticipating a very rewarding year. A candlelight ceremony installing twenty-eight pledges started the school semester right. As a pledge project prospective members helped organize the Library Laboratory on campus. This "Work-shop room" provides catalogs, magazines, and other reference tools for use by Library Science students.

The Fraternity sponsored a "Donut Sale" which was a successful project with profits amounting to \$67.50. This project and other fund-raising plans to be initiated this year serve a twofold purpose: 1) provide funds to alleviate costs for ABA members attending PSLA convention and 2) to contribute to the recently established Mildred Forness Memorial Loan.

The Mildred Forness Memorial Loan was established in memory of the late Mildred Forness who served 50 years on the Library Faculty Department at Edinboro. The Loan will be given to a deserving library student - supported by Miss Forness's family and Alpha Beta Alpha contributions.

Alpha Beta Alpha members have allotted funds for the fraternity's officers to attend the PSLA convention in Kutztown April 27-28. We anticipate approximately twenty members to join the officers and sponsors of ABA in this trip, to attend the convention.

Representatives of ABA will be attending the Council of School Librarians in Pittsburgh, April 14. The officers encourage members to attend as many field experiences (Conventions) as possible to enrich our knowledge of libraries.

Alpha Beta Alpha members are actively participating in Recruitment Committee under the leadership of Mrs. Culbertson, faculty member of library science department. The purpose of this committee is to promote the

library program at Edinboro. The committee approaches this task by visiting various high schools, discussing our college program, and including a slide presentation and brochures.

Christmas for the Library Science Department was celebrated in a special way this year. Alpha Beta Alpha members decorated the campus elementary school gymnasium in the Christmas spirit. Among the decorations included a Christmas Tree, (later donated to the school) pinata, and favors for the tables.

The sit-down dinner included turkey, (prepared by Mrs. Hesketh and Mr. Ristvey, sponsors) a variety of potatoes, stuffing, salads, and many deserts all prepared by Alpha Beta Alpha members.

This Christmas there was a special atmosphere of closeness and giving. Faculty members, friends, and library students all joined in making this dinner and party one to be remembered.

After the dinner we were joined by Santa (President Keith Revak). All took turns telling Santa of their good deeds and hopes for certain Christmas presents. Santa gave two poinsettias away - one to sponsor Mrs. Hesketh, and one to Russell Buescher.

To start off 1973, Alpha Lambda Chapter will sponsor another pledge class starting February 16. Pledge Mistress, Debbie Dixon, and Pledge Master Joe Klan will supervise the program. Serving as officers for 1973 term till May includes: President Keith Revak, Vice-President Robert Capone, Secretary Rosemarie Herle and Treasurer Marie Zappitello. Mrs. Hesketh and Mr. Ristvey will continue to serve as sponsors of Alpha Beta Alpha.

February 8th, guest speaker for ABA meeting will be Mr. Huntley who has traveled to many parts of the country. His talk will be concerned with the USSR. Slide presentation will also be included.

March and May speakers have not been finalized at this point.

Dr. Hilda Elkins, of Library Science faculty Edinboro State College will be chairman of National Library Week. The date of April 13, we will celebrate National Library Week on campus by having various workshops, media sessions, book talks and reviews, guest speakers, and the annual NLW dinner to conclude activities. At this time the annual Mildred Forness Award will be given to the outstanding senior library science student.

Through much cooperation this past semester has been a success. We anticipate 1973 being as rewarding a year for Alpha Beta Alpha.

CELEBRATION OF NLW ON CAMPUS OF EDINBORO

February 1, 1973

Plans to date

Date: April 13, 1973

An all day session is planned including:

- 1) A workshop of the organization of non-book materials under the direction of Mrs. Virginia Crowe.
- 2) A workshop on media production.
- 3) A dinner followed by:
 - a) A speech by Dr. Lawrence Allen, Dean of the University of Kentucky College of Library Science, entitled "Information is Power."

- b) The presentation of the Mildred Forness Award.
- 4) Book and Media Reviews

The workshops will be for half-day sessions duplicated both morning and afternoon so that one can, if he chooses, attend both workshops. The workshop instruction will be individualized so that both students and librarians who wish to refresh certain skills can be accommodated.

PEOPLE HONORED

At MU CHAPTER, November 6, 1972, Mr. Applemann from the Olympia Unit 5 District spoke about the Instructional Material Centers for the Unit. The District consists of nine Elementary schools, two Junior High schools, and one Senior High School. He explained the operations of the central office, the acquisitions, and the distribution of materials to all the schools.

The December meeting was highlighted by an adapted version of "Twas the Night Before Christmas," presented by the pledges. The Fondue Party was held in the Milner Library Staff Lounge with the staff and the professors of the department invited as guests.

Mary Crow, R.R.A., Director of Medical Records at St. Joseph Hospital in Bloomington spoke to us about her job as a Medical Records Librarian at the January meeting.

The Office of the Superintendent of Public Instruction will supply the film *Beyond the Books* for the February meeting. The highlights of this film are scenes from Instructional Material Centers from surrounding areas in Illinois.

On November 6, 1972, Mrs. Robert (Deborah) Strife Zimmermann was presented the Wones Scholarship. Making the presentation was Colonel Edward M. Wones. The scholarship was established in memory of Colonel Wones' wife, who had a deep love for libraries.

Mu Chapter has decided to honor two people who are associated with the club with Life Memberships in Alpha Beta Alpha and Honorary Members of Mu Chapter. They are Miss Hazelle M. Anderson who has served the Library Science Department for many years as Assistant Professor and is retiring at the conclusion of Summer School and Colonel Edward M. Wones who has been so very gracious towards the club. They will be honored at the Annual Founder's Day Banquet in May.

PLEDGES PLUS

EPSILON CHAPTER will hold initiation ceremonies in the new Harry Lee Waterfield Room of the University Library on the evening of February 6th.

It has had a larger group of pledges this time than they have had in several years. The pledges number fifteen, and they were very busy last semester. For a money-making project, they held a bake-sale and used the proceeds to buy a camera for the chapter. The pledges also decorated the float for Alpha Beta Alpha's entry in the homecoming parade.

Last year's president, Ann Wyatt, is now teaching English at Mayfield High School. The new president, parliamentarian, and both secretaries are engaged in student-teaching for the first half of this semester.

Chapter News

FUND RAISING DRIVE

December 11, members of the pledge class, ETA CHAPTER, participated in a Christmas skit program for active members and the faculty. The program featured in pantomime such well known children's stories as Wind in the Willows, Snow White, Winnie the Pooh, and Madeleine's Rescue. "The show must go on" tradition was faithfully carried on when a severe ice storm prevented some pledges from arriving which required those present to double up in their parts.

Active members and pledges participated in a major fund raising drive to help support chapter activities by making assorted gifts i.e. vases, bookmarks, crocheted hats and vests, and other homemade gifts.

The enthusiastic reception of the sale, which netted over 200 dollars for the Eta Chapter, has further been decreed an annual affair by the Executive Committee.

SAMMY IS STOLEN

ALPHA SIGMA'S programs were the homecoming parade, guest speakers, and a progressive Christmas dinner during the fall semester.

Twelve pledges worked on a big papier-mache football with the school's mascot, Sammy the Bearkat. This was to be attached to the top of a car driven in the Sam Houston State Homecoming Parade. Unfortunately the project was stolen the night before the parade. However, our officers represented ABA by riding in the parade.

Several of their guest speakers were Dr. Lesta Burt, director of the Library Science Department of SHSU, spoke on bibliotherapy, and Mrs. Elizabeth Andrews, a professor of Education at SHSU, presented a program on "The Self Image".

The Library Science instructors sponsored the progressive Christmas dinner. Appetizers were served at Mrs. Ann Fleming's; the main course of turkey and ham at Mrs. Bonnie Thorne's; and dessert at Dr. Lesta Burt's home.

January 22, 1972, our twelve pledges were initiated as members in the Thomason Room in the University's library. Each pledge was given a white rose from the center piece after the ceremony.

PLANS FOR THE YEAR

The officers of RHO CHAPTER, Kutzow State College, for the new year are; President Anne Stewart, Vice-President Jennie Crosby, Secretary Barbara Grammata, Treasurer Diane Rinehart, and Historian Phyllis Guise.

Traditionally in our chapter, two meetings gain priority over the rest. The

first is an Annual Book Week Dinner. At this meeting the new members of our chapter are initiated and we have a speaker who tells us of his job as it relates to the School Library. This year we had Jane Flory, who writes books for Elementary school children.

In the spring we invite some of the Fall Student Teachers and Co-operating Librarians to come and tell of the experiences they have had. Our underclass membership tells us that this helps prepare them for their upcoming experience. We also sponsor a trip each spring. This year we are going to see the Baker and Taylor Book Distributors in Somerville, New Jersey.

We are happy to see the *Alphabet* back in print. It is especially nice to see what other chapters are doing at their meetings.

Florence State University

(continued from page 1)
which was held at Florence State, Alpha Beta Alpha members registered participants and Miss Naves presented the inspirational thoughts.

This year's new activities involved members in campus activities which are not library oriented. Miss Teresa Fisher and Miss Paula Sorrelle represented the chapter in competition for Homecoming Queen and Diorama Beauty, school yearbooks, respectively. All members are actively involved either as participants or spectators in the university's intramural competition.

It is with anticipation Alpha Epsilon looks forward to more involvement and more growth as we plan for today and for tomorrow.

MEMBER LISTINGS

ALPHA PHI

Lou Helen Devine
Mary Louise Green
Annie Mae Harris
Barbara Ann Hawkins
Annie Lois Love
Dorothy Fae McCann
Ella Mae McVeener
Rossie H. Neal
Florida Payton
Carolyn Shields
Rachel Smith
Joyce Irene Stubbs
Earnestine Washington

CHI CHAPTER-3/16/72

Sarah Daugherty
Awanee Huggins
Dana Lowman
Kathleen Wikerson
Jill Young

ALPHA PSI-5/6/72

Deborah Lind Bauch
Susan Emily Boodoshuk
Diane Claire Burke
Phyllis J. Burkholder
Kathleen Costello
Vicki Deasey
Diane DeMentanere
Karen Kaye Everett
Jill Flecker
Arlene Glesne
Dorothy M. Green
Virgo Lorene Hammond
Mary Ann Hays
Barbara Lynn Huges
Barbara E. Johnson
Cynthia L. Johnson
Becky Sue Kemerling
Mary Ellen Lovely
Jacquelyn McCormick
Kathleen Rose Miller
Margot Mills
Jennifer Lou Morton
Judy Lee Quisenberry
Marilyn L. Shelley
Ginger C. Silurus
Bonnie Sue Spread
Cate Lynn Syverson
Alfred L. Wiltcoxen
Marcia Daily
Elma Pesler
Mary Ellen Graff
Eugene Litchfield
Iona Wernick

ALPHA PSI-Life 5/6/72

Bettie Barton
Sherry Lee Cosentine
Pamela Kovach
Cheryl Lynn Lambert
Dee Ann Longson
Barbara Ann Moser
Gayle Lynn Stakley
Merril Lee Van Arlen

ALPHA IOTA-3/13/72

Sandra Campanile
Ruth Eckhouse
Beverly Fearay

Patricia Housman
Beth Johnson
Janet Partridge
Mary Reilly

ALPHA IOTA-Life

James Brozina

ALPHA UPSILON-5/12/72

Billye Lou Ferguson
Cheryl Sanders
Rita Williams

ALPHA KAPPA

Fall 1970

Theo Baker
Janet Bledsoe
Edwina Burrill
Barbara L. Campbell
Barbara V. Campbell
Roberta Feary
Linda Kenyon
Maunita Milford
Barbara Mitchell
Marsha Preston
Peggy Townsend
Anne Williams

ETA - April 1972

Louise Addington
Mary Helen Aguire
Linda Ann Boone
Janet Ann Branstetter
Gay Estelle Carter
Annette Heye
Judy Medina
Margaret Jean Pierce
Sandra Lee Sadler
Patricia Wheeler

ALPHA UPSILON-9/21/72

Shirley Henderson
Joyce Schneider

ALPHA BETA-Oct. 1972

Gaynell Barberto
Eileen Bartlett
Charlotte Danos

February 1972

Janice Breton
Susan Diket
Cynthia Couget
Kathleen Shepherd
Pauline Ozo

ALPHA THETA-1/18/72

Dixie Alford
Mary Virginia Barnes
Feat Pollard Brumfield
Lanora Green
Rachael Green
Paula S. Guier
Judy E. Harper
Elizabeth Kohler
Judy S. Thibodeaux
Rebecca S. Wiggins

5 yr. - 11/13/72

Janet Wimberly

ALPHA XI-5/16/72

Deborah J. Colley
Bobbi L. Pollard

5 yr. 5/18/72

Avis Baker
Sandra K. Boll
Janet Dettmer
Cheryl Keyser
Alice Myers

Life - 5/18/72

Thelma Lamb

MU-October 1972

Sharon Ann Arnold
Samuel Carnthers Bouke
Susan Marie Christensen
Fax Ann Cunningham
Mary Katherine Dresbeck
Lee Alexander Logan
Cynthia Lucille May
Sue Ellen Shiley
Surolyn Joy Strader

ALPHA NU-1/11/72

Jane Fowler
Clevie Harris
Candee Taliff

March 28, 1972

Beth Belanger
Pat Crockett
Judy Mason

October 3, 1972

Virginia Herring
Betty Howard
Sue Sink

Life

Freida S. Hull
Elizabeth Huber

ALPHA ETA-Jan. 1972

Barbara Alcorn
Jo Bainbridge

May 1972

Brenda McCoy
Lee McLaughlin
Fay Peele
Lynda Lee Stine
Peggy Williams

ALPHA GAMMA

Sept. 1972

Janice Burkhardt
Judy Dyer
Bonnie Smith
Gail Thompson
Janet VanHoose

ALPHA PHAWA

Spring '72

Karen Carter
Karen Christmas
Marsha Douglas
Dorothy Dove
Patricia Fauber
Jacqueline Foley
Bertha Fry
Barbara Hathaway

Willard Heuser
Lisa Howard
Mary Ann Hutchinson
Debbie Johnson
Susan Kite
Sara Mason
Sharon Nelson
Victoria Phillips
Eleanor Price
Kay Richardson
Patricia Roberts
Joseph Swadley
Brenda Turner
Nancy Walker
Diane Westfall
Linda Whitesell
Bonnie Whitlow
Patricia Garber

5 yr. members

Marcia Marie Allen
Linda Leigh Floyd
Barbara S. Hathaway
Kathleen Elizabeth Hayden
Linda Aird Kagarine
Zilla H. Mason
Claudia J. Moore
Linda Parks Parker
Wanda J. Stone
Patricia McCall

Life

Jean Ann Gaudet
Brenda Louise Green
Alice Andrews Showalter

RHO - 11/13/72

Bernice Andrews
Barbara Benjamin
Gloria Bohr
Mary Ann Brossman
Thomas Collins
Luis Doncevic
Roger Edelman
Ellen Fetterhoff
Bonnie Foster
Eileen Halm
Richard Hill
Darlene Johnson
Karen Kline
Carolyn Mears
Barbara Mendel
Linda McVough
Nancy Romich
Susan Schroyer
Wendy Seagraves
Lisa Selig
Joan Sherer

Life

Virginia Crowe
Kevin Fedeli

ALPHA PI

Tricia Manikowski
Debbie Rabuck
Douglas Francis
Sue Johnson
Patsy Rummel
Linda Capogrossi
Annette Shively
Stephen Metzger
Sue Riedorf
Shirley Levemier
Ruth Ann Pazanski
Judy Root
Wendy Eveshart
Kathy Brooks
Marilyn Moose
Nancy Johnson

ALPHA LAMBDA

Mary Alice Anderson
Debbie Bacher
Vickey Bares
Constance Bobbie
Marilyn Borneman
Linda Brown
Carol Brynda
Marian Buscher
Linda Bugza
Robert Capone
Joyce Carney
Jane Ceglaz
Geraldine Check
Susan Crothers
Jane D'Alfonso
Diana Dodson
Jane Donlie
Kaye Dunne
Henrietta Gallego
Barbara Gingsback
Joyce Heury
Kirstina Lindstrom
Frances McCarthy
Marsha McGee
Michelle Mulligan
June Nath
Charlene Nordstrom
Judy Reese
Keith Revak
Mariane Roznata
Sandy Schrader
Cindy Shank
Nancy Tipiak
Rex Wiggers

ACTIVE ALPHA BETA ALPHA CHAPTER OFFICERS

CHAPTER-P. O. Box	PRESIDENT	VICE-PRESIDENT	SECRETARY	TREASURER	HISTORIAN OR REP	PLEDGE OR PAR
ALPHA--4726	Patricia Spiller	Debbie Broadnox Joann Gabor	Margaret Davidson Carolyn Ford	Sherry Baldrige Rose Durr	Patricia Bedgood	PL-Mary Jane Rivers PA-Pat Sullivan
BETA						
GAMA-453	Janice Stateler	Deborah Cavitt	Marcia Mankin	Debra Read	Alice Ann Garwood	PL-Nancy Mundell
DELTA	Sheila Marcum	Marsha Paddock	Susan Carter	Anita Knox		
EPSILON	Paulette Joiner	Joyce Vaughn	Ann Mathis Martha Hendon	Lynn Jaquith	Carol Russell	PA-Boyce Vaughn
ZETA						
ETA-23265	Carol Underwood	Gay Carter	Sandy Sadler	Judy Medina	Louise Addington	PL-Janet Branstetter
LAMDA						
MU	Carol Christenson	Lydia Lopez Talese Swickard	Jan Foss Jackie Plourde	Rose Chenoweth	Debbie Dinkel	
NU						
OMICRON						
RHO						
SIGMA						
UPSILON						
CHI						
PSI	Barbara Hassler	Cheryl Long	Marilyn Rickman	Laurel Halcomb	Sandre Dempsey	
ALPHA ALPHA-4206	Gail Cavedo	Debbie McKee	Claire Archibald	Gloria Turner	PA-Sherry Alcott	PL-Janice Jaquet
ALPHA BETA						
ALPHA GAMA	Debbie Mattingly	Nancy Jones	Janet Van Hoose Janice Burkhart	Bonnie Smith	Judy Dyer	PL- Maxin White
ALPHA DELTA						
ALPHA EPSILON	Connie Naves	Susan McCreless	Ann Mitchell		Barbara Malone	
ALPHA ETA	Barbara Alcorn	Lee McLaughlin	Jo Bainbridge	Peggy Williams	Brenda McCoy	PA-Lynda Stine
ALPHA THETA						
ALPHA IOTA						
ALPHA KAPPA						
ALPHA LAMDA-54	Keith Revak	Bob Capone	Rosemarie Herrle	Marie Zappitello		PL-Nancy Tirpak PL-Rex Wiggins
ALPHA MU						
ALPHA NU-843	Christine DeWeese	Barbara Hunt	Brenda Hicks	Deedy Lawson	Mary Wilderman	Paula Gowld
ALPHA XI						
ALPHA OMICRON						
ALPHA PI						
ALPHA RHO	Anne Stewart	Jennie Crosby	Barbara Grammata Frances Hazmark Montye Sollock	Diane Rinehart	Phyllis Guise	
ALPHA SIGMA	Donna Owens	Sue Jones		Kathleen Parker	R-Lee Hampton Charles Lero	PA-Lynnette Frieda
ALPHA TAU						
ALPHA UPSILON						
ALPHA PHI	Lou Hellen Devine	Annie Love	Dorothy McCann Ella McNeamer	Janie Daniels	R-Aurelia Thomas	PA-Rachel Smith
ALPHA CHI	Marge Aniszewski-1st Beth Armstrong-2nd sem	Beth Armstrong	Linda Hagen Connie Streekstru	Pat Giedel	Claire Wolski Carol Thomson	Sue Rand
ALPHA PSI	Kathleen Castello	Jacquelyn McCormick	Marilyn Shelley	Phylis Berkholder	R-Susan Bordoshuk Alfred Wilcoxon	PA-Deborah Bauch