

Illinois State University

ISU ReD: Research and eData

---

OpenLine Newsletter

Civil Service Council

---

6-2006

## OpenLine Newsletter, June 2006

Civil Service Council  
*Illinois State University*

Follow this and additional works at: <https://ir.library.illinoisstate.edu/oln>

---

### Recommended Citation

Civil Service Council, "OpenLine Newsletter, June 2006" (2006). *OpenLine Newsletter*. 121.  
<https://ir.library.illinoisstate.edu/oln/121>

This Book is brought to you for free and open access by the Civil Service Council at ISU ReD: Research and eData. It has been accepted for inclusion in OpenLine Newsletter by an authorized administrator of ISU ReD: Research and eData. For more information, please contact [ISUReD@ilstu.edu](mailto:ISUReD@ilstu.edu).

# OpenLine

OpenLine is published monthly by the **Civil Service Council** of Illinois State University, Campus Box 1830, Normal, IL 61790-1830.

**JUNE 2006**

**VOLUME XXX, NUMBER 12**

## DATES TO REMEMBER

June 26.....Next classified ad deadline  
 July 4 .....Independence Day  
 July 5 .....Next *OpenLine* article deadline  
**July 11.....Council meeting**  
**July 18.....Council meeting**

## INSIDE

Service Awards..... p. 2  
 Live Right This Summer ..... p. 2  
 Larry Keeran Retirement Reception ..... p. 2  
 Advertising Guidelines ..... p. 2  
 Next *OpenLine* Article Deadline ..... p. 2  
 Wellness ..... p. 3  
 CS Council Representatives ..... p. 3  
 CS Council Ex-Officio Members ..... p. 3  
 Government Web Links..... p. 3  
 Classified Advertisements ..... p. 4  
 Contact Us ..... p. 4

## STAFF

EDITOR..... Pam Burress  
 LAYOUT/DESIGN..... Narry Kim  
 PROOF READERS ..... Patti Munster  
   Suzanne Ferrara  
   Ramona Garner  
 COUNCIL LIAISON ..... Vicki Bryan

## FRIVOLOUS FACTS

Pigs, dogs, and some other animals can taste water, but people cannot. Humans don't actually taste the water, they taste the chemicals and impurities in the water.

[Source:  
<http://www.coolquiz.com/trivia/facts/index.asp>]

## QUICK QUOTE



A thoughtful mind, when it sees a Nation's flag, sees not the flag only, but the Nation itself; and whatever may be its symbols, its

insignia, he reads chiefly in the flag the Government, the principles, the truths, the history which belongs to the Nation that sets it forth.

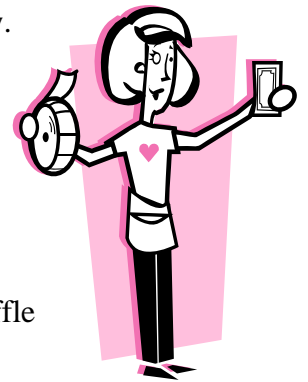
-- Henry Ward Beecher

[Source:  
<http://www.famous-quotes-and-quotations.com>]

## RAFFLE WINNERS

The prize drawing for the 2006 Civil Service Council Raffle took place on May 16 at the regularly scheduled Civil Service Council meeting. The top 10 winners are listed below.

All proceeds from the raffle will benefit the Civil Service Dependents Scholarships Fund. For more information and to see the rest of the prize winners, please see the list on the Council Web site:  
[www.cscouncil.ilstu.edu](http://www.cscouncil.ilstu.edu).



Thank you to everyone who supported the raffle this year. We couldn't do it without you!

Item Donated	Estimated Item Value	Business/ Department	Winner
One Best Buy gift card	\$200	Civil Service Council	Joe Wolf, Carpentry
One night stay at Country Inn & Suites	\$150	Country Inn & Suites - Central IL Regional Airport	Brad Blakebill, Community
One Whitacre's Country Oak Shoppe gift certificate	\$100	Whitacre's Country Oak Shoppe - Hudson	Michelle Wilson, Comptroller's Office
One framed ISU photograph	~\$100	Tak Chung & Lin Hinds	Susan Jones, CDS
One ISU faculty/ staff surface parking permit	\$85	Parking Services	Bob Rossman, CAST
One ISU faculty/ staff surface parking permit	\$85	Parking Services	Lynn Danner, Milner
One gift certificate for a 2006-2007 gold series music events subscription	\$70-\$75	School of Music	Jordan Brutlong, Grounds
One gift certificate for a 2006-2007 gold series music events subscription	\$70-\$75	School of Music	Steve Bean, Housing
One gift certificate for two gold-level tickets to any Shakespeare Production	\$56	School of Theatre	Kim Ummel, Campus Dining
One gift certificate for two gold-level tickets to any Shakespeare Production	\$56	School of Theatre	Tony Witte, Parking

## SERVICE AWARDS

~ FELICIA YOUNG

### 30 YEARS

- Amy Irene Armstrong, 2202 University Registrar, 6/2/1976

### 25 YEARS

- Robert Duane Boma, 4120 Biological Sciences, 6/29/1981

### 20 YEARS

- Cecil C. Jones, 9000 Facilities Management, 6/10/1986

### 15 YEARS

- Eugene Richard Bailey, 3420 Unv Mktg & Communications, 6/3/1991
- Steven Jean Bozarth, 9000 Facilities Management, 6/24/1991
- Teri Rae Derango, 8610 Conferencing Unit, 6/3/1991
- Deborah Lynn Lescher, 4400 Geography-Geology, 6/17/1991

### 10 YEARS

- Teresa J. Drollinger, 9100 Campus Services/Grounds, 6/23/1996
- Mitchell Thomas Shadid, 1200 Comptroller's Office, 6/10/1996



## LIVE RIGHT THIS SUMMER

~ ANNIE LAURIE CADMUS



The energy and product consumption associated with the summer months can have a significantly negative impact on our environment. Fortunately, there are simple ways to decrease your impact on the Earth

while still taking advantage of the sunny weather. Consider these Earth-friendly suggestions this summer:

- **Dine outside...the responsible way!** Of the traditional grilling methods, natural gas and propane grilling have the smallest negative impacts on the environment. Charcoal and briquette grilling pollute the air considerably.
- **Taking a road trip?** Consider public transportation. If you want to drive, but don't get good gas mileage, some car rental agencies now offer environmentally-friendly vehicle options.
- **Think native.** When landscaping this summer, avoid dangerous pesticides. Instead, explore organic options. Also, be sure to landscape with native flowers, trees and shrubs.
- **Row your own boat.** If spending the day on the water sounds like the ideal getaway, consider renting a kayak or canoe instead of a motorboat.
- **As always, practice the 3Rs.** Reduce, reuse, recycle is fashionable at any time of the year.



For more information on how to "green" your life, check out the Green Team Web site ([www.greenteam.ilstu.edu](http://www.greenteam.ilstu.edu)).



## LARRY KEERAN RETIREMENT RECEPTION



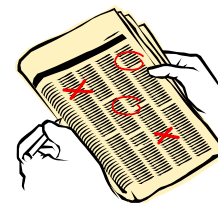
A retirement reception for Larry Keeran, Network Engineer with Telecommunications & Networking, will be Tuesday, June 20 from 2 to 4 p.m. in the Circus Room in the Bone Student Center.

Keeran will retire June 30 after almost 22 years of service to the University.

## ADVERTISING IN THE *OPENLINE*

--ELAINE THOENNES

The Civil Service Council began working on offering classified ads to employees in May of 2003 and it is a service that has continued to this day. Please review our advertising guidelines and submission form and prepare to sell something you don't need or buy something you do! We hope this additional service to our constituents will garner many positive transactions. Please feel free to provide your comments on this new service by contacting your Council Representative or simply send an e-mail to the Council at [cscouncil@ilstu.edu](mailto:cscouncil@ilstu.edu).



### Conditions for submitting ads:

- Only Illinois State University employees and retirees may submit ads.
- There is a limit of ONE ad per employee or retiree per issue.
- The ad must be resubmitted for each issue it is run.
- The appropriate fee must be included with each submission form.
- Ads must be submitted on the Ad Submission Form, located in the *OpenLine* or on the Council Web site (photocopies are acceptable). No ads will be accepted over the telephone.
- One item or service per submission form.
- Ads must be 20 words or less.
- Ads will not be accepted for travel, credit cards, real estate, financial, .com, nudity, personals, and firearms to stay within accepted University practices and statutes.
- Ads will appear in the next issue of the *OpenLine*, space permitting. Any ads not run due to space limitations will be held and appear in the following issue of the *OpenLine*. If you wish to cancel the ad, the individual who submitted the ad must contact Pat Schnitker, 4040 Graduate School (8-2109).
- Refunds will only be given if the ad was held for the following edition and canceled prior to the submission deadline for that issue.
- Only your first name, home phone number, and e-mail address will appear in the ad; no ISU numbers will be published.
- *OpenLine* and the Civil Service Council are not responsible for any item or service advertised.
- The *OpenLine* staff and Civil Service Council reserve the right to restrict, edit, or refuse any advertisement.

### Advertising Rates:

- Vehicle \$5
- Personal Service \$5
- All Others \$2

### To submit an ad:

- Complete the Classified Ad Submission Form on the last page.
- Send or deliver the form and payment (check made payable to "Civil Service Council - *OpenLine*") to Pat Schnitker, 4040 Graduate School, Hovey 309.
- Ad must be received by the 25<sup>th</sup> of the month (i.e., August 25 for September *OpenLine*).

## NEXT *OPENLINE* ARTICLE DEADLINE

With the upcoming Fourth of July holiday, the next deadline to submit articles to the *OpenLine* newsletter will be Wednesday, July 5.



Articles, news and ideas pertinent to civil service employees can be sent by e-mail to the *OpenLine* staff ([cscopenline@ilstu.edu](mailto:cscopenline@ilstu.edu)) or to the Civil Service Council ([cscouncil@ilstu.edu](mailto:cscouncil@ilstu.edu)).

## WELLNESS

~ NIKKI BRAUER

Please contact the HR Customer Service Center at 438-8311 to register for the following events.

### Finding Balance

Join Dianne Feasley, RD, and Nikki Brauer, MS, to explore ways to eat healthier, reduce personal stress, and spend time focusing on taking better care of yourself. These sessions will include activities lead by facilitators and will leave time for sharing with group participants. Sessions meet on the following Wednesdays: June 28, July 5, 12, 19 and 26, from Noon - 1:00 p.m. in Moulton 102C.



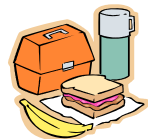
### Adventures in Parenting

Join a group of parents and caregivers, connecting with one another to share ideas and offer support throughout their Adventures in Parenting. Meeting formats are flexible and topics are chosen by the group. Summer meetings will be held noon to 1pm in Moulton 102C on the following dates: June 20, July 21, and August 17, 2006. Everyone is welcome!

### Blood Chemistry and Cholesterol Screening

Wellness Program screenings will now be performed by Student Health Services, and held at the Student Services Building on campus. Appointments are available from 7:30 – 9:00 a.m. on Friday, July 28. Prices are as follows:  
Chemistry panel + lipid profile \$32.00  
PSA \$40.00

### Lunch w/the Experts



- **Helping Children Resolve Conflict**  
June 27, Noon - 1 p.m., Turner 104 A  
Karen Stephens, Director, ISU Child Care Center
- **Yoga for Beginners**  
August 9, 11, 11:15 - 11:55 a.m., McCormick 103  
Tona Schenck, MA, Yogafit Certified Instructor

### Ergonomics and the Work Area

Assistance is offered to those who wish to create a work area that reduces risk for injury and stress on the body. Individual appointments and group presentations can be scheduled by contacting Nikki Brauer at 438-8845.

Visit our Web site for seated workstation recommendations ([www.hr.ilstu.edu/wellness/activity\\_ergonomics.shtml](http://www.hr.ilstu.edu/wellness/activity_ergonomics.shtml)).

### Massage

The Wellness Program continues to partner with local massage specialists, Aches-Away, to offer massage on campus. The fee is \$12 for every 15 minutes and Swedish, Reflexology, Sports Massage, and Deep tissue will be offered.

Visit their Web site for massage descriptions ([www.aches-away.com](http://www.aches-away.com)). Massages are held in the Faculty/Staff Commons Conference Room in the Bone Student Center from 10:00 a.m. to 2:00 p.m. on the following dates:

- Thursday, June 22
- Tuesday, July 11
- Thursday, July 27
- Tuesday, August 8



## CIVIL SERVICE COUNCIL REPRESENTATIVES

~ MELODY PALM

**GROUP I:** Vicki Bryan, 2320 Financial Aid (Fell Hall), 8-2782, [vlbryan@ilstu.edu](mailto:vlbryan@ilstu.edu); Pat Schnitker, 4040 Graduate School (Hovey Hall), 8-2109, [plschnit@ilstu.edu](mailto:plschnit@ilstu.edu); Sarita Cox, 5570 MBA Program (College of Business Bldg), 8-2981, [smcox@ilstu.edu](mailto:smcox@ilstu.edu)

**GROUP II:** Jan Jolynn Staley, 5590 Marketing (College of Business Bldg), 8-7261, [jjstaley@ilstu.edu](mailto:jjstaley@ilstu.edu); Barb Arbogast, 5121 School of Kinesiology & Rec (McCormick), 8-5952, [barbogas@ilstu.edu](mailto:barbogas@ilstu.edu); Linda Klawitter, 5020 Agriculture (Ropp Agriculture Bldg), 8-5655, [ljklawit@ilstu.edu](mailto:ljklawit@ilstu.edu)

**GROUP III:** Julie Caplinger, 6370 Center for Teaching, Learning & Technology (ITDC), 8-7582, [jacapli@ilstu.edu](mailto:jacapli@ilstu.edu); Jack Wylie, 1520 Central Receiving (John Green Food Serv Bldg.), 8-8011, [jdwyli@ilstu.edu](mailto:jdwyli@ilstu.edu); Ron Thompson, 6380 Classroom Technology Support (Nelson Smith Bldg.), 8-7732, [rdthomp@ilstu.edu](mailto:rdthomp@ilstu.edu)

**GROUP IV:** John Moss, 9000 Facilities Management (Physical Plant Office), 6-2413, [jlmoss@ilstu.edu](mailto:jlmoss@ilstu.edu); Tom D. Ryan, 9100 Campus Services (Bone Student Center), 8-2222, [tryan@ilstu.edu](mailto:tryan@ilstu.edu); John (Jac) Copes, 2610 Food Service (Watterson), 6-9944, [jacopes@ilstu.edu](mailto:jacopes@ilstu.edu)

**GROUP V:** Martha Burk, 8900 Adventure of the American Mind (Milner Library), 8-3474, [mjburk@ilstu.edu](mailto:mjburk@ilstu.edu); Steven Lancaster, 2610 Campus Dining Services (John Green Bldg.), 8-2042, [sjlanca@ilstu.edu](mailto:sjlanca@ilstu.edu); Melody Palm, 2640 Dean of Students (Bone Student Center), 8-2222, [mapalm@ilstu.edu](mailto:mapalm@ilstu.edu)

## CS COUNCIL EX-OFFICIO MEMBERS

~ MELODY PALM

**Human Resources Member:** Tammy Carlson, 1300 Human Resources (Nelson Smith Building), 8-8846, [tscarls@ilstu.edu](mailto:tscarls@ilstu.edu)

**Employee Advisory Committee Representative:** Dave Turner, 9000 Facilities Services (Heating Plant), 8-5516, [dturne@ilstu.edu](mailto:dturne@ilstu.edu)

**Campus Communications Committee Representative:** Kevin Wiand, 3040 Research and Sponsored Programs (Hovey Hall), 8-2596, [kgwiand@ilstu.edu](mailto:kgwiand@ilstu.edu)

**OpenLine Editor:** Pam Burress, 3500 Telecommunications & Networking (Williams Hall Annex), 8-2795, [paburre@ilstu.edu](mailto:paburre@ilstu.edu)

## GOVERNMENT WEB LINKS

### ILLINOIS STATE UNIVERSITY'S SHARED GOVERNANCE

Academic Senate..... [www.academicssenat@ilstu.edu](http://www.academicssenat@ilstu.edu)  
Annuitants Association..... [www.annuitants@ilstu.edu](http://www.annuitants@ilstu.edu)  
Administrative/Professional Council..... [www.apcouncil@ilstu.edu](http://www.apcouncil@ilstu.edu)  
Civil Service Council..... [www.cscouncil@ilstu.edu](http://www.cscouncil@ilstu.edu)  
Student Government Association..... [www.sga@ilstu.edu](http://www.sga@ilstu.edu)

### STATE OF ILLINOIS

Illinois Channel..... [www.illinoischannel.org](http://www.illinoischannel.org)  
State Universities Civil Service System..... [www.sucss.state.il.us](http://www.sucss.state.il.us)  
SUCSS Classification..... [www.sucss.state.il.us/cpm.asp](http://www.sucss.state.il.us/cpm.asp)  
Status Notices  
U.S. Representative Jerry Weller..... [weller.house.gov](http://weller.house.gov)  
11th Congressional District  
State Representative Dan Brady..... [www.rep-danbrady.com](http://www.rep-danbrady.com)  
88th Representative District  
State Senator Bill Brady..... [www.senatorbillbrady.com](http://www.senatorbillbrady.com)  
44th Senate District  
U.S. Senator Dick Durbin..... [durbin.senate.gov](http://durbin.senate.gov)  
U.S. Senator Barack Obama..... [obama.senate.gov](http://obama.senate.gov)

### NATIONAL

National Education Association..... [www.nea.org](http://www.nea.org)

**CLASSIFIED ADVERTISEMENTS**

**Personal Service:**

- Tree and shrub trimming. Please call Carl or Terry at 310-3397, 530-5137 or 527-4492.
- Radon questions or problems? Licensed radon professional. Over 1000 systems installed with 100% success rate. Call David (Bud) Smith at 473-2955.



**CONTACT US**



Please feel free to contact any Council member if you have questions, comments, or ideas so that we may better serve you. Any campus activities or information that would be relevant to Civil Service personnel can also be submitted.

Send information to the Council officers (cscouncil@ilstu.edu), to the *OpenLine* staff (cscopenline@ilstu.edu), or to any other Council member prior to the deadline (see page 1).

**Have a Happy Summer!**

**OpenLine Classified Ad Submission Form**

*All information must be printed clearly.*

First and Last name: \_\_\_\_\_

Employment status: Full time / part time / retired / \_\_\_\_\_

Home phone: (\_\_\_\_\_) \_\_\_\_\_ - \_\_\_\_\_

ISU phone: \_\_\_\_\_ - \_\_\_\_\_

Best time to reach you at your home phone: \_\_\_\_\_

E-mail: \_\_\_\_\_

Campus Box/Dept: \_\_\_\_\_

Check one category:

- Free Items (\$2)                       Personal Service (\$5)  
 For Sale-Auto (\$5)                       Wanted (\$2)  
 For Sale-Other (\$2)

**ONE word per box. 20 words or less.**


Send this completed form and payment by the 25<sup>th</sup> of the month to:

**Pat Schnitker, 4040 Graduate School.**

(Make checks payable to: Civil Service Council - *OpenLine*.)

Visit [www.ilstu.edu/depts/civilservice/documentation/openline/Ad.pdf](http://www.ilstu.edu/depts/civilservice/documentation/openline/Ad.pdf) for more information about advertising in the *OpenLine*.



## CIVIL SERVICE COUNCIL SURVEY

*Your Civil Service Council wants to know what you think. Please take a few moments to fill out this survey. The answers you provide will help the Council to better serve you. Your helpful input has already been received. When you have completed the survey please mail it to Council member, Jan Jolynn Staley, 5590 Marketing.*

**IF YOU HAVE PREVIOUSLY PARTICIPATED IN THIS SURVEY ONLINE, PLEASE DO NOT RESPOND AGAIN.**

1. In a few sentences, please explain your understanding of the function of the Civil Service Council.

---



---



---

2. The purpose of this question is to measure your overall level of interest in the Civil Service Council. Please indicate the number which most closely represents your opinion. Overall, do you find that the Civil Service Council is:

Unimportant	1	2	3	4	5	6	7	Important to me
Of no concern	1	2	3	4	5	6	7	Of concern to me
Irrelevant	1	2	3	4	5	6	7	Relevant to me
I have insufficient knowledge to judge	1	2	3	4	5	6	7	I know enough do judge

3. What is your level of interest in attending Civil Service Council?

Not interested    1    2    3    4    5    6    7    Very interested

4. How interested are you in serving on the Civil Service Council?

Not interested    1    2    3    4    5    6    7    Very interested

5. How interested are you in voting during the Civil Service Council elections?

Not interested    1    2    3    4    5    6    7    Very interested

6. What is your opinion of the level of support given by the university to the Civil Service Council?

Not supported    1    2    3    4    5    6    7    Very supported

7. How supportive is your supervisor of your involvement in the Civil Service Council?

Not supportive    1    2    3    4    5    6    7    Very supportive

8. How satisfied are you with Civil Service Council representation concerning the following issues?

<b>Activities</b>	<b>Not satisfied</b>	<b>Very satisfied</b>
a. Legislative issues	1   2   3   4   5   6   7	1   2   3   4   5   6   7
b. Retirement issues	1   2   3   4   5   6   7	1   2   3   4   5   6   7
c. Benefit changes	1   2   3   4   5   6   7	1   2   3   4   5   6   7

9. Overall, how effective do you perceive the Civil Service Council to be at improving your employment conditions?

Ineffective    1    2    3    4    5    Effective

10. Are you aware of the Council's meeting schedule?     Yes     No

11. How often do you review the meeting minutes?     Never     Sometimes     Always

12. How interested are you in the following campus-wide information sessions?

<b>Information sessions</b>	<b>Not interested</b>	<b>Very interested</b>
Search committee open forums	1   2   3   4   5   6   7	1   2   3   4   5   6   7
Academic Affairs planning presentations	1   2   3   4   5   6   7	1   2   3   4   5   6   7
Other topic-based campus-wide information sessions	1   2   3   4   5   6   7	1   2   3   4   5   6   7

13. Please circle the appropriate numbers to indicate your interest in attending the following Civil Service Council events.

<b>Events</b>	<b>Least interested</b>			<b>Most interested</b>			
Picnics	1	2	3	4	5	6	7
Raffles	1	2	3	4	5	6	7
Bus trips	1	2	3	4	5	6	7
Holiday partys	1	2	3	4	5	6	7
Children's holiday partys	1	2	3	4	5	6	7
Food drives	1	2	3	4	5	6	7
Fund-raisers	1	2	3	4	5	6	7
Homecoming	1	2	3	4	5	6	7
Civil Service awards ceremonies	1	2	3	4	5	6	7

14. Please rank in order of importance, which source you receive your Council information from, where 1 is the most important, 2 is the next important, and 3 is least important.

\_\_\_\_ Civil Service Council Web site    \_\_\_\_ *OpenLine* newsletter    \_\_\_\_ Civil Service listserv

15. How effective do you find each source of these sources of information?

<b>Other topic-based campus-wide information sessions</b>	<b>Ineffective</b>			<b>Very effective</b>			
Civil Service Council Web site	1	2	3	4	5	6	7
<i>OpenLine</i> newsletter	1	2	3	4	5	6	7
Civil Service listserv	1	2	3	4	5	6	7

16. Do you have computer access at work?     Yes     No

17. How many times a week are you able to access a computer? \_\_\_\_\_

18. What method of contact would you prefer for Council information (Please check only one)?

- Phone                       Flyers                       Newsletters  
 E-mail                       Mailings                       Other (please specify) \_\_\_\_\_

19. The Civil Service Council currently meets the first and third Tuesday of each month. What effect does this meeting time have on your ability to attend?

Negative effect    1    2    3    4    5    6    7    Positive effect

20. What day of the week would you prefer to attend Council meetings?

- Monday     Tuesday     Wednesday     Thursday     Friday     Saturday     Sunday

21. What time of the day would you prefer to attend Council meetings?

- Morning (Before 10am)     Lunchtime (10am-2pm)     Afternoon (2pm-5pm)     Evening (After 5pm)

22. How satisfied are you with the current 5-Group structure of the Council?

Very unsatisfied    1    2    3    4    5    6    7    Very satisfied

***The following demographic information is completely anonymous and will help us learn more about our patrons and their needs.***

23. What is your age? \_\_\_\_\_

24. What is your job classification (e.g., Account Technician I, Computer Service Representative II, etc.)

\_\_\_\_\_

25. What is your Civil Service Council Group? (Select one)

- 1     2     3     4     5     Don't Know

26. How many years have you been employed at ISU? \_\_\_\_\_

27. What is the highest level of education you have completed?

- Less than high school     Some high school     High school graduate     Associate's or technical degree  
 Some college     Bachelor's degree     Master's degree     Doctorate degree