

Illinois State University

ISU ReD: Research and eData

OpenLine Newsletter

Civil Service Council

4-2008

OpenLine Newsletter, April 2008

Civil Service Council
Illinois State University

Follow this and additional works at: <https://ir.library.illinoisstate.edu/oln>

Recommended Citation

Civil Service Council, "OpenLine Newsletter, April 2008" (2008). *OpenLine Newsletter*. 95.
<https://ir.library.illinoisstate.edu/oln/95>

This Book is brought to you for free and open access by the Civil Service Council at ISU ReD: Research and eData. It has been accepted for inclusion in OpenLine Newsletter by an authorized administrator of ISU ReD: Research and eData. For more information, please contact ISUReD@ilstu.edu.

DATES TO REMEMBER

April 25 Next classified ad deadline
 May 6Next *OpenLine* article deadline
May 6.....**Council meeting**
 May 9Spring Semester ends
 May 9-10 Commencement
 May 11Mother's Day
 May 12CSC Cubs bus trip
 May 19 Summer session begins
May 20.....**Council meeting**
 May 26Memorial Day observed

INSIDE

Service Awards p. 2
 Volunteers Needed for Passages..... p. 2
 Next Article Deadline..... p. 2
 Potpourri..... p. 2
 Civil Service Council Representatives ... p. 3
 Alumni Night at the Museum p. 3
 Raffle 2008..... p. 3
 USA Luncheon Announcement..... p. 3
 Classified Ads p. 4

STAFF

EDITOR..... Pam Burress
 LAYOUT/DESIGN Narry Kim
 Copy Editor Suzanne Ferrara
 PROOF READERSPatti Munster
 Ramona Garner
 COUNCIL LIAISON.....Melody Palm

SCHOLARSHIP APPLICATIONS BEING ACCEPTED

~ Melody Palm

The Civil Service Council is again awarding scholarships to dependents of Civil Service staff. A student may be awarded a maximum of two one-year scholarships. Up to six scholarships each year will be awarded through the ISU Foundation in the amount of \$1,000 each (\$500 each semester). Recipients must be Illinois State University students.



Additional scholarships may be awarded to students attending Illinois State or other universities or community colleges. These scholarships will generally be in the amount of \$500 each (\$250 each semester). The Civil Service Council will be responsible for these awards through fundraising activities.

Eligibility requirements for the **Civil Service Dependent Scholarships** include the following:

1. [The recipient must] be a child living in household and/or dependent of a full-time ISU Civil Service status employee who has at least two years of continuous service at Illinois State University.
2. Be a full-time student working toward an undergraduate degree or diploma.
3. Meet the requirements of the school he/she plans to attend and have a grade point average of "C" or above in both high school and/or college.
4. Financial need will be considered.
5. A student may be awarded a maximum of two one-year scholarships.

The Council is also awarding the seventh annual Carl Johanson Scholarship. It was endowed by Al and Elaine Goldfarb and is named for Elaine's father. This scholarship is awarded to a Civil Service staff member who is taking classes and is seriously working towards a degree. It is awarded in the amount of \$500 (\$250 each semester).

Eligibility requirements for the **Carl Johanson Scholarship** include the following:

1. [The recipient must] be a full-time ISU Civil Service employee who has at least two years of continuous service at Illinois State University.
2. Be a student working toward a degree or diploma.
3. Have achieved at least junior status (including master's degree and doctoral candidates).
4. Have a grade point average of "C" or above during his/her college career to date. Scholarship will be one of two criteria considered for the award.
5. Financial need is the second of the two criteria.
6. Be a student at Illinois State University.

Application forms for both scholarships may be obtained on the Council's Web site at www.cscouncil.ilstu.edu or by contacting any Council representative. The deadline for applications for both scholarships is Monday, June 16, 2008. Please mail the completed forms to Melody Palm, Scholarship Committee Chair, 2640 Bone Student Center (8-3930). If hand-delivering, the office is 139 Bone Student Center.



QUICK QUOTE

"I think the environment should be put in the category of our national security. Defense of our resources is just as important as defense abroad. Otherwise what is there to defend?"



-- Robert Redford

[Source: www.quotegarden.com/environment.html]

FRIVOLOUS FACTS

Rice is the chief food for half the people of the world.

[Source: www.nicefacts.com/]



SERVICE AWARDS

~ Dave Schaafsma

30 YEARS

- John Marshall Clement, 3470 Administrative Information Systems, 4/3/1978



25 YEARS

- Imelda Mayer, 9100 Campus Services/Grounds, 4/3/1983
- Timothy L. Simmons, 3420 University Marketing & Communications, 4/4/1983
- Tom D. Ryan, 9100 Campus Services/Grounds, 4/25/1983

20 YEARS

- Warren Edgar West, 5121 School of Kines & Rec-McC, 4/8/1988
- Eric Wade Klawitter, 9000 Facilities Management, 4/18/1988
- Robert Patrick Siebert, 2660 Redbird Arena, 4/25/1988

10 YEARS

- Marie E. Evans, 9100 Campus Services/Grounds, 4/12/1998
- Lillie B. Westbrook, 9100 Campus Services/Grounds, 4/12/1998
- Patricia J. Walsh, 1210 Student Accounts, 4/13/1998
- Francis R. Keenan, 2660 Redbird Arena, 4/20/1998
- Barbara Jean Rexroat, 1200 Comptroller's Office, 4/27/1998

VOLUNTEERS NEEDED FOR PASSAGES

~ Barb Dallinger

SIGN UP NOW TO VOLUNTEER FOR PASSAGES!
www.passages.ilstu.edu

Beginning August 13, 2008, we will welcome approximately 5,000 new freshman and transfer students to the Illinois State University campus with our Passages Welcome Weekend program. During Passages, students have the opportunity to become individually acquainted with departmental faculty, learn the skills necessary for success, and form connections with other new students. This important university-wide event assists our new students in their transition to campus.

The success of this program relies heavily on the added energy only YOU, our university staff volunteers, can bring!

A variety of opportunities to help will be available during the program, which includes:

- ✓ Educational sessions and presentations
- ✓ Campus orientation activities
- ✓ Social events
- ✓ Special meals
- ✓ Evening entertainment



Release time for Civil Service staff up to 1.5 hours is authorized and may be granted by supervisors based on operational needs of the unit.

I sincerely hope you'll join me during at least one of these very special events. Please visit www.passages.ilstu.edu to register.

Barb Dallinger, Chair
Passages Volunteer Committee
passagesvolunteer@ilstu.edu
438-8540
(or Jeannette Harrison at 438-2156 / jlharri2@ilstu.edu)

NEXT OPENLINE ARTICLE DEADLINE

The next deadline to submit articles to the *OpenLine* newsletter will be **Tuesday, May 6**. Articles, news and ideas pertinent to civil service employees can be sent to the Civil Service Council (cscouncil@ilstu.edu) or to the newsletter staff (cscopenline@ilstu.edu).



POTPOURRI

~ Dianne Liebenstein

SYMPATHY – OUR SINCERE SYMPATHIES TO THE FOLLOWING EMPLOYEES...

- Phyllis Gillis, Facilities Management, on the death of her father, and Bill Gillis, Facilities Management, on the death of his father-in-law, Newell Chace, on March 8, 2008.
- To the University Community on the death of Wiley Schultze, a grounds worker with the Facilities Management Department on March 13, 2008.
- Dwayne Moore, Facilities Management, on the death of his father, Paul Moore, March 22, 2008.
- Lea Donnelly, Facilities Management, on the death of her father, Joseph Spencer, March 23, 2008.

BIRTHS – CONGRATULATIONS TO:

- Garnet Allen, Chemistry Department, on the birth of her granddaughter, Jayla Lily Curtis, February 28, 2008, 8 lbs and 19 inches long.
- Debbie Schwarzentruher, Office of Human Resources, on the birth of her grandson, Jackson Parker, on March 14, 2008, 9 lbs. 1 oz. and 21 ¾ inches long.



WELCOME TO ISU – FEBRUARY 2008

- Grant T. Avery, University Police Department
- Mary E. Bahan, Bone Student Center
- Mary K. Powell, University Housing Services
- Harold B. Riggins, Administrative Information Systems
- Alexander S. Wheeler, Administrative Information Systems

PROMOTIONS – FEBRUARY 2008

- Todd E. Eddy, Administrative Clerk, CeMast
- Daniel M. Kane, Stationary Engineer, Facilities Management
- Angela R. Scott, Administrative Aide, English

RESIGNATIONS – FEBRUARY 2008

- Annrika D. Campbell, Student Counseling Services
- Josiah M. Chalmers, Field House Facilities
- Shannon W. Craig, Campus Dining Services
- Teresa L. Henry, University Marketing/Communications
- Renae L. Shannon, Office of Human Resources
- Carol Ann Weis, Thomas Metcalf School

RETIREMENTS – FEBRUARY 2008

- Delories J. Beverly, Facilities Management
- Cathy Jo Clark, Facilities Management
- Sharon Harper, Student Health Services



Your help in providing Potpourri information is needed and appreciated. Please feel free to contact Dianne Liebenstein by phone (438-8311) or by e-mail (dbliebe@ilstu.edu) to report births, marriages, or deaths of immediate family members.

CIVIL SERVICE COUNCIL REPRESENTATIVES

GROUP I

Sarita Cox, 5570 MBA Program (College of Business Bldg), 438-2981, smcox@ilstu.edu; **Vicki Bryan**, 2320 Financial Aid (Fell Hall), 438-2782, vlbryan@ilstu.edu; **Jeanette Harrison**, 4900 Enrollment Mgmt & Academic Services (Hovey), 438-2156, jlharri2@ilstu.edu

GROUP II

Jan Jolynn Staley, 5590 Marketing (College of Business Bldg), 438-7261, jjstaley@ilstu.edu; **Barb Arbogast**, 5121 School of Kinesiology & Rec (McCormick), 438-5952, barbogas@ilstu.edu; **one vacant position**

GROUP III

Julie Caplinger, 6370 Center for Teaching, Learning & Technology, (ITDC), 438-7582, jacapli@ilstu.edu; **Ted Coussens**, 6380 Classroom Technology Support (Nelson Smith Bldg), 438-7412, tacouss@ilstu.edu; **Brian Huonker**, 6350 Institutional Web Support (Old Union), 438-3680, bkuhonk@ilstu.edu

GROUP IV

John (Jac) Copes, 2610 Food Services (Watterson), 436-9944, jacopes@ilstu.edu; **Tom Cotton**, 9100 Campus Services (Grounds), 438-2035, tlccotton@ilstu.edu; **David Bagnell**, 9000 Facilities Management/Plumber (Carter Harris), 438-5611, djbagne@ilstu.edu

GROUP V

Mark T. Buckley, 2610 Campus Dining Services (Watterson), 438-5370, mtbuckl@ilstu.edu; **Melody Palm**, 2640 Dean of Students (Bone Student Center), 438-3930, mapalm@ilstu.edu; **Theresa Sanchez**, 2202 Evaluation Services (Moulton), 438-2500, tasanch@ilstu.edu

EX-OFFICIO MEMBERS:

- ✓ **Human Resources Representative: Nancy Spangler**, 1300 Human Resources (Nelson Smith Building), 438-5507, njspang@ilstu.edu
- ✓ **Employee Advisory Committee Representative: Dave Turner**, 9000 Facilities Services (Energy Management), 438-5516, dlturne@ilstu.edu
- ✓ **Campus Communications Committee Representative: Kevin Wiand**, 3040 Research and Sponsored Programs (Hovey Hall), 438-2596, kgwiand@ilstu.edu
- ✓ **OpenLine Editor: Pam Burress**, 3500 Telecom & Networking (Williams Hall Annex), 438-2795, paburre@ilstu.edu

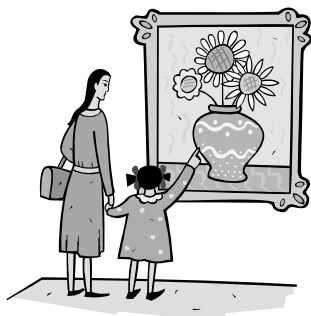
ALUMNI NIGHT AT THE MUSEUM

~ Juliana Duncan

Join the Illinois State University Alumni Association with President and Mrs. Al Bowman for "An evening at the Illinois State Museum" on Wednesday, May 28, 2008.

From 6 to 8 pm cocktails & hors d'oeuvres will be served. At 6:30 pm there will be a program featuring President Bowman. The museum will be open before and after the presentation.

Cost is \$15 per person. Parking will be available in the ground-level state employee parking lot directly west of the museum.



Please respond by May 21 by registering online at www.alumni.ilstu.edu/springfield or call 1-800-366-4478.

Questions and special accommodations can be requested at 438-3204.

Illinois State Museum
502 South Spring Street
Springfield, IL 62706

RAFFLE 2008

~ Melody Palm

It's time for the annual Civil Service Council raffle to benefit the Civil Service Dependents Scholarship Fund. The tickets cost \$1 each, or you can buy six tickets for \$5. You may buy tickets from any Council member (see the Council Representatives list).

The prize list is growing! Employees of the Heating Plant and Office of Energy Management have donated a camping theme gift basket, including a \$250 gift certificate to White Pines Inn at White Pines State Park, and other items for camping such as toasting forks and ingredients for s'mores.

Visit the Council's Web site (www.cscouncil.ilstu.edu) for an updated prize list. The prize drawing will take place on May 20 at the regularly scheduled Civil Service Council meeting. You need not be present to win. This is your chance to win a really great prize, and help some very deserving students at the same time!

Item No.	Item Donated	Approx. Value	Donated by
1	One gift certificate to White Pines Inn at White Pines State Park, plus a basket of camp goodies (compass, lantern, toasting forks, S'mores ingredients, and more)	up to \$275	Employees of ISU Heating Plant and ISU Office of Energy Management
2	One Best Buy gift card	\$200	ISU Civil Service Council
3	One pair of season tickets to the Community Players Theatre	\$120	Community Players
4	One faculty/staff surface parking permit (2008/2009)	\$88	Parking Services
5	One lead crystal vase with ISU seal (slightly imperfect seal) (10 1/2" H)	\$84	Human Resources
6	One Bulova chrometone and glass clock	\$84	Human Resources
7	One Menard's gift card	\$50	Yvette Huddleston
8	One crystal box with ISU seal (3 3/4" x 3 3/4" x 2")	\$38	Human Resources
9	One crystal box with ISU seal (3 3/4" x 3 3/4" x 2")	\$38	Human Resources
10	One crystal box with ISU seal (3 3/4" x 3 3/4" x 2")	\$38	Human Resources
11	One crystal box with ISU seal (3 3/4" x 3 3/4" x 2")	\$38	Human Resources
12	One Avon gift bag (shampoo, lotion, and other pampering items)	up to \$25	Avon
13	One Tupperware set (junior season serve and mini quick shake)	\$25	Tupperware
14	One gift certificate	\$20	Casey's Flower Shop
15	One 150 th anniversary canvas tote bag	\$20	Barnes & Noble
16	One 150 th anniversary canvas tote bag	\$20	Barnes & Noble
17	One 8 1/2" x 11" Reggie Redbird padfolio	\$10	Barnes & Noble

USA LUNCHEON ANNOUNCEMENT

~ Sandi Krumtinger



Save the date of Thursday, June 5, for the semi-annual University Staff Association (USA) luncheon in the Bone Student Center. The theme this year will be "hopping into summer." As usual, expect the luncheon to provide members and guests with a variety of entertainment, door prizes and opportunities to socialize with co-workers and retirees from across campus. The next issue of the *OpenLine* will include more information and the registration form.

CLASSIFIED ADVERTISEMENTS

For Sale - Auto:

- 2006 30RLS Keystone Outback Sidney Ed. RV travel trailer with 14' slideout. Excellent condition. Call Debbie after 4 p.m. (309)473-2852.



For Sale - Other:



- Whirlpool-Kenmore-Roper Washers & Dryers. Six-month warranty on each unit. Call Dave's Sales & Service at (309) 830-3315.

Personal Service:

- Affordable personal training - customized plans to help reach your fitness goals! Call Heather at 242-2895 or visit NewCreationFitness.net.



- For tree and shrub trimming, please call Carl or Terry at 530-5137 or 527-4492. For firewood, please call Carl or Terry at 365-8466.

- RADON causes Lung Cancer. We fix RADON problems! Over 1,200 homes remedied. Licensed for over 10 years. Call David Smith at (309) 473-2955.



OpenLine Classified Ad Submission Form

All information must be printed clearly.

First and Last name: _____

Employment status: Full time / part time / retired / _____

Home phone: (_____) _____ - _____

ISU phone: _____ - _____

Best time to reach you at your home phone: _____

E-mail: _____

Campus Box/Dept: _____

Check one category:

- Free Items (\$2) Personal Service (\$5)
 For Sale-Auto (\$5) Wanted (\$2)
 For Sale-Other (\$2)

ONE word per box. 20 words or less.

Send this completed form and payment by the 25th of the month to:

Theresa Sanchez, 2202 Evaluation Services, 438-2500.

(Make checks payable to: Civil Service Council - *OpenLine*.)

Visit <http://www.cscouncil.ilstu.edu/documentation/openline.shtml> for more information about advertising in the *OpenLine*.

