

Illinois State University

ISU ReD: Research and eData

OpenLine Newsletter

Civil Service Council

4-2009

OpenLine Newsletter, April 2009

Civil Service Council
Illinois State University

Follow this and additional works at: <https://ir.library.illinoisstate.edu/oln>

Recommended Citation

Civil Service Council, "OpenLine Newsletter, April 2009" (2009). *OpenLine Newsletter*. 83.
<https://ir.library.illinoisstate.edu/oln/83>

This Book is brought to you for free and open access by the Civil Service Council at ISU ReD: Research and eData. It has been accepted for inclusion in OpenLine Newsletter by an authorized administrator of ISU ReD: Research and eData. For more information, please contact ISUReD@ilstu.edu.

DATES TO REMEMBER

May 1 Next classified ad deadline
May 5 CS Council meeting @ noon
May 6 *OpenLine* article deadline
May 8-9 Commencement
May 10 Mothers Day
May 19 CS Council meeting @ noon
May 25 Memorial Day observed
May 27 ISU Day @ Wrigley Field

INSIDE

Potpourri..... p. 2
Tip of the Hat p. 2
Service Awards p. 2
Annual ISU Benefit Choice Fair..... p. 2
Next *OpenLine* Article Deadline p. 2
Sexual Assault Awareness Month p. 3
Safe Medicine Disposal p. 3
Civil Service Council Representatives ... p. 3
Classified Advertisements p. 4

STAFF

EDITOR..... Pam Burress
LAYOUT/DESIGN Narry Kim
PROOF READERS Ramona Garner
.....Patti Munster
COUNCIL LIAISON.....Melody Palm

WE WANT YOU!



Council elections will be held soon!

You are needed to become a part of
the Civil Service Council!

Contact any member of the Council soon for more
information on how you can play a role in the
Illinois State University shared governance.
(See page 3 for Council member contact
information.)

SCHOLARSHIP APPLICATIONS AVAILABLE

~ Melody Palm, CSC Scholarship Committee Chair



The Civil Service Council is again awarding scholarships to dependents of Civil Service staff. A student may be awarded a maximum of two one-year scholarships.

Civil Service Dependent Scholarships awarded through the ISU Foundation will generally be in the amount of \$1,000 each (\$500 each semester). Recipients must be Illinois State University students. Scholarship amounts may be increased based on applications and available funds in the scholarship year.

Additional scholarships may be awarded to students attending Illinois State or other Universities or Community Colleges. These scholarships will generally be in the amount of \$500 each (\$250 each semester). The Civil Service Council will be responsible for these awards through fundraising activities.

Eligibility requirements for the Civil Service Dependent Scholarships include the following:

1. [The recipient must] Be a child living in household and/or dependent of full-time ISU Civil Service status employee who has at least two years of continuous service at Illinois State University.
2. Be a full-time student working toward an undergraduate degree or diploma.
3. Meet the requirements of the school he/she plans to attend and have a grade point average of "C" or above in both high school and/or college.
4. Financial need will be considered.
5. A student may be awarded a maximum of two one-year scholarships.

The Council is also awarding the seventh annual Carl Johanson Scholarship. It was endowed by Al and Elaine Goldfarb and is named for Elaine's father. This scholarship is awarded to a Civil Service staff member who is taking classes and is seriously working towards a degree. It is awarded in the amount of \$500 (\$250 each semester).

Eligibility requirements for the Carl Johanson Scholarship include the following:

1. [The recipient must] Be a full-time ISU Civil Service employee who has at least two years of continuous service at Illinois State University.
2. Be a student working toward a degree or diploma.
3. Have achieved at least junior status (including master's degree and doctoral candidates).
4. Have a grade point average of "C" or above during his/her college career to date. Scholarship will be one of two criteria considered for the award.
5. Financial need is the second of the two criteria
6. Be a student at Illinois State University.

Application forms for both scholarships may be obtained on the Council's Web site at www.cscouncil.ilstu.edu or by contacting any Council representative. The deadline for applications for both scholarships is **Wednesday, June 10, 2009**. Please mail the completed forms to **Melody Palm, Scholarship Committee Chair, 2640 Bone Student Center (8-3930)**. If hand-delivering, the office is located at 139 Bone Student Center.

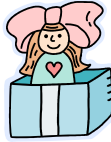


POTPOURRI

~ Dianne Liebenstein, Volunteer Reporter

BIRTHS – OUR CONGRATULATIONS TO:

- John Getz, University Marketing & Communications (Printing Services), on the birth of his daughter, Maggie Grace Getz, March 6, 2009, 5 lbs. 12 oz., 18 ½ inches long.
- Sue Stombaugh, Katie School of Insurance, on the birth of her granddaughter, Kennady Reese Stombaugh, April 3, 2009, 7 lbs 6 oz, 18 ½ inches long.



SYMPATHY – OUR SINCERE SYMPATHIES TO:

- Sharon Sweeney, University Police Department, on the death of her father, Donald Sweeney, February 24, 2009.
- Larry Maxhimer, Facilities Management, on the death of his mother-in-law, Celestine McLeod, March 6, 2009.
- Allen Love, Facilities Management, on the death of his father, Kenneth Love, March 13, 2009.
- Paul Hart, Facilities Management, on the death of his brother, Alan Hart, March 19, 2009.
- Richard Corry and Robert Corry, Facilities Management, on death of their father, Art Corry, March 20, 2009.
- To the University Community on the death of Retiree Walter Smith, Facilities Management, Building Service Worker/Supervisor, March 27, 2009.
- Julie Adcock, Facilities Management, on the death of her grandfather, Lloyd West, April 1, 2009.

Your help in providing Potpourri information is needed and appreciated. Please feel free to contact Volunteer Reporter Dianne Liebenstein by phone (438-8311) or by e-mail (dbliebe@ilstu.edu) to report births, marriages, or deaths of immediate family members. Information for the Potpourri section is voluntarily submitted by employees. Notifications are not verified by birth, marriage, or death certificates.

TIP OF THE HAT

~ Dianne Liebenstein, Human Resources Representative

WELCOME TO ISU – FEBRUARY 2009

- David L. Boylan, Facilities Management
- Julie D. Drake, Campus Dining Services
- Nancy A. Duncan, Admin. Information Systems
- Amanda M. Hendrix, eMerge
- Maria L. Hertel, Milner Library
- Robert E. Hochecker, Campus Dining Services
- Peter V. Holly, eMerge
- Robert L. Oakley, Milner Library
- Jamison A. Prianos, Admissions
- Michael J. Rayman, ISU Golf Course
- Barbara C. Stamets, Dean of Education
- Daniel J. Taube, Computer Infrastructure



PROMOTIONS – FEBRUARY 2009

- Mona Rains, Office Manager, School of Music (January 2009)
- Alan R. Mittelsteadt, Building Mechanic, Facilities Management
- Lyndsey A. Carney, Library Specialist, Milner Library
- Robert T. Dwyer, Application Programmer III, Registrar
- Michelle K. Kauffman, Senior Library Specialist, Milner Library
- Brenda S. Tomlin, Clerk, Clinical Experiences

RETIREMENTS – FEBRUARY 2009

- John M. Murphy, Facilities Management

RESIGNATIONS – FEBRUARY 2009

- Daisy T. Duarte, Admin. Information Systems
- Rosa A. Getty, Facilities Management
- Antoinette L. Luke, Illinois Special Olympics

SERVICE AWARDS

~ David Schaafsma, Human Resources Asst. Director

30 YEARS

- Dianna Dee Damkoehler, 7000 Thomas Metcalf School, 4/23/1979
- Hurley Bruce Lee, 9100 Campus Services/Grounds, 4/23/1979



25 YEARS

- Mark A. Cooper, 6380 Classroom Technology Sup, 4/30/1984

20 YEARS

- Dennis Gregg Bain, 9100 Campus Services/Grounds, 4/3/1989
- Michael A. Schumacher, 2660 Redbird Arena, 4/6/1989
- Paul T. Uphoff, 2610 Food Service, 4/6/1989
- Linda Louise Calhoun, 5700 School Of Theatre, 4/17/1989

15 YEARS

- Linda Louise Hinds, 5600 College Of Fine Arts, 4/4/1994

10 YEARS

- Leona A. Brescher, 6700 Illinois Special Olympics, 4/9/1999
- Robin L. Jackson, 2540 Health Services, 4/26/1999

ANNUAL ISU BENEFIT CHOICE FAIR

~ Vicki Sullivan, Human Resources Officer

The Benefit Choice Fair will be held Wednesday, May 6, in the Old Main Room of the Bone Student Center from 10:00 a.m. to 2:00 p.m.

Representatives from the various health plans, optional insurance programs, and tax deferred annuity companies (TDA) will be on hand to answer questions.



Vendors have been invited from various organizations, including: Cigna, Health Alliance, Personal Care, OSF Health Plans, St. Joseph Hospital, Healthlink, Minnesota Life, Bromenn,

Bright Start, EyeMed, Fidelity, TIAA- CREF and SURS. Staff from the Human Resource Benefit Services area will also be available to answer questions and process benefit choice changes.

Choices to be made during the Benefit Choice period include:

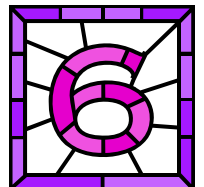
- Enroll in the Flexible Spending Program, comprised of the Medical Care Assistance Plan (MCAP) and the Dependent Care Assistance Plan (DCAP).
- Participate in the Sick Leave Bank.
- Opt in or out of health, dental, and vision coverage.
- Change health insurance carriers.
- Add/Delete dependents from health, dental, vision, and life insurance plans.



Benefit Choice period begins Friday, May 1, and ends at midnight on Sunday, May 31. Please continue to check the Human Resources website at www.hr.ilstu.edu for further updates.

NEXT OPENLINE ARTICLE DEADLINE

The next deadline to submit articles to the *OpenLine* newsletter will be **Wednesday, May 6** following the first Council meeting of the month. Articles, news and ideas pertinent to civil service employees can be sent to the Civil Service Council (cscouncil@ilstu.edu) or to the newsletter staff (cscopenline@ilstu.edu).



SEXUAL ASSAULT AWARENESS MONTH

~ Aaron Woodruff, ISU Police Officer

April is Sexual Assault Awareness Month.

While working or on duty, U.S. employees experienced 36,500 rapes and sexual assaults from 1993 to 1999. This excludes the more than 12,000 annual reported acts of sexual harassment at work. Sexual violence that happens in the workplace is unfortunately common. All forms of sexual violence result in high costs for businesses and the economy. Sexual violence on the job correlates with decreased productivity, higher rates of absenteeism, and lower employee morale. Interrupted work, as a result of sexual violence, can also jeopardize the economic stability of individuals, families, and communities. Economic insecurity can lead to a greater dependence on public assistance programs and poor outcomes for families and society. It also increases healthcare costs for both individuals and employers.

In addition to acts of violence that do occur at work, the work setting also influences individuals and communities in other ways. We spend an average of 160 hours a month at work. The work environment has a large impact on individuals, families, and communities. If people feel threatened, harassed, or unsafe at work, the negative effects can spill over into other settings. Please do your part and report acts of sexual harassment to your supervisor and acts of violence to the police.

Stepping Stones, YWCA's sexual assault program, provides 24-hour assistance for sexual assault and sexual abuse victims and their families in McLean County. This free, confidential service also serves as the central sexual assault resource and referral agency. For more information contact Stepping Stones at (309) 662-0461 extension 247. PATH Crisis counseling can also be reached 24 hours a day at (309) 827-4005 or toll free at (800) 570-PATH.



(Information provided by the National Sexual Violence Resource Center)

SAFE MEDICINE DISPOSAL

~ Enid Cardinal, Facilities Management Sustainability Coordinator

Spring is here and that means spring cleaning! This year clean out your medicine cabinet too! If you are like me, you have a number of things in there that have expired, you no longer need or maybe you don't even remember what it is! Did you know that in the United States, young people between the ages of 12 and 17 abuse prescription drugs more than any illicit drug except marijuana? So remove the temptation and clean out your medicine cabinets. But don't throw things in the trash or pour them down the drain where they can contaminate the water supply! There is a better solution.



In McLean County over-the-counter and non narcotic prescription medications are accepted at the following pharmacies: Eastland Pharmacy at OSF, Atrium Pharmacy at BroMenn Regional Medical Center, and Merle Pharmacies Inc., and Ryan Pharmacy. Thanks to a partnership with the Heartland Coalition and Leadership in McLean County, all medications, including controlled substances may now be taken to secure drop-off locations for proper disposal at Bloomington and Normal police departments and Illinois State University Health Services. Medications collected at these locations are incinerated.

If you would like to learn more about the environmental concerns of medication in the water and waste stream, visit www.p2d2program.org, an initiative started by Pontiac High School students. More information is available pertaining to preventing teen prescription drug abuse by visiting www.heartlandcoalition.org/DrugDisp/Teen_Rx_Drug_Abuse.html.



CIVIL SERVICE COUNCIL REPRESENTATIVES

Group I

Vicki Bryan

2320 Financial Aid (Fell Hall), 438-2782, vlbryan@ilstu.edu

Sarita Cox

5570 MBA Program (College of Business Bldg), 438-2981, smcox@ilstu.edu

Jeanette Harrison

4900 EMAS (Hovey Hall), 438-2156, jlharri2@ilstu.edu

Group II

Barb Arbogast

5121 School of Kinesiology & Rec (McCormick Hall), 438-5952, barbogas@ilstu.edu

Valerie Bridson

5440 Clinical Experiences (DeGarmo Hall), 438-5030, vlbrids@ilstu.edu

Jan Jolynn Staley

5590 Marketing (College of Business Building), 438-7261, jjstaley@ilstu.edu

Group III

Ted Coussens, SECRETARY

6380 Classroom Technology Support (Nelson Smith Building), 438-7412, tacouss@ilstu.edu

Jean Darnall

2640 Bone Student Center (Bone Student Center), 438-8692, djdarna@ilstu.edu

Brian Huonker, VICE-CHAIR

3420 Unv Mktg & Communications (Alumni Center), 438-3680, bkhuonk@ilstu.edu 2010

Group IV

David Bagnell

9000 Facilities Management/Plumber, 438-2410, djbagne@ilstu.edu

John (Jac) Copes

9000 Facilities Management (Watterson), 436-9944, jacopes@ilstu.edu

Tom Cotton

9100 Campus Services/Grounds, 438-2035, tl cotton@ilstu.edu

Group V

Mark T. Buckley

2610 Campus Dining Services (Watterson), 438-5370, mtbuckl@ilstu.edu 2009

Melody Palm, CHAIR

2640 Dean of Students (Bone Student Center), 438-3930, mapalm@ilstu.edu

Theresa Sanchez, TREASURER

2202 ISU Evaluations Services (Moulton Hall), 438-2500, tasanch@ilstu.edu

Ex-Officio Members

Dave Turner, Employee Advisory Committee Representative

9000 Facilities Services (Heating Plant), 438-5516, dlturne@ilstu.edu

Kevin Wiand, Campus Communications Committee Representative

3040 Research and Sponsored Programs (Hovey Hall), 438-2596, kgwiand@ilstu.edu

Nancy Spangler, Human Resources Representative

1300 Human Resources (Nelson Smith Building), 438-5507, njspang@ilstu.edu

Pam Burress, OpenLine Editor

3500 Telecommunications & Networking (Williams Hall Annex), 438-2795, paburre@ilstu.edu

CLASSIFIED ADVERTISEMENTS

For Rent:

- Grant Rd. 3 bedroom, 3 bath brick ranch. 3520 sq. feet. No smoking, no pets. \$1500. Call for viewing, 827-5015.

For Sale – Auto:

- Ford Van. 1991 Osage Conversion. Low mileage. Excellent condition. \$2000. Call 309-829-8471.



For Sale – Other:

- Beautiful dining room set, thirty years old, durable, heavy: table, four chairs, hutch, \$1,250. Four bar stools, \$250. Call 530-9667.
- Dining room set. Oak, durable, heavy. Table with 2 leaves, 6 high-back chairs, 2-pc hutch. \$500. Call 451-1073.
- Cherry finish roll-top desk. 55”W, 44”H, 22”D. Excellent condition. Sacrifice at \$75. Call 888-9379. Moving out of state.
- Plastic or metal 55 gallon barrels. Great for rain barrels, composting, storage, used oil, bio-diesel. Many other uses. \$10/ea. Call 309-928-2652.



Personal Service:

- Illinois #1 Radon Mitigation Company for quality & customer satisfaction! Licensed over 10 years. David Smith Radon Remedies. Call 309-473-2955.
- For tree and shrub trimming, please call Carl or Terry, 530-5137 or 527-4492. For firewood, please call Carl or Terry, 365-8466.
- Mowing and trimming, residential, reasonable rates. Call Bob, 824-6828 or 473-2852.
- Will babysit for you this summer, or for weekends, or just a night out! Call Jessica at 309-827-8024.

OpenLine Classified Ad Submission Form

All information must be printed clearly.

First and Last name: _____

Employment status: Full time / part time / retired / _____

Home phone: (_____) _____ - _____

ISU phone: _____ - _____

Best time to reach you at your home phone: _____

E-mail: _____

Campus Box/Dept: _____

Check one category:

- | | |
|---|---|
| <input type="checkbox"/> Free Items (\$2) | <input type="checkbox"/> Personal Service (\$5) |
| <input type="checkbox"/> For Sale-Auto (\$5) | <input type="checkbox"/> Wanted (\$2) |
| <input type="checkbox"/> For Sale-Other (\$2) | |

ONE word per box. 20 words or less.

Send this completed form and payment by the 25th of the month to:

Theresa Sanchez, 2202 Evaluation Services, 438-2500.

(Make checks payable to: Civil Service Council - *OpenLine*.)

Visit <http://www.cscouncil.ilstu.edu/documentation/openline.shtml> for more information about advertising in the *OpenLine*.

