

Illinois State University

ISU ReD: Research and eData

OpenLine Newsletter

Civil Service Council

8-2012

OpenLine Newsletter, August 2012

Civil Service Council
Illinois State University

Follow this and additional works at: <https://ir.library.illinoisstate.edu/oln>

Recommended Citation

Civil Service Council, "OpenLine Newsletter, August 2012" (2012). *OpenLine Newsletter*. 51.
<https://ir.library.illinoisstate.edu/oln/51>

This Book is brought to you for free and open access by the Civil Service Council at ISU ReD: Research and eData. It has been accepted for inclusion in OpenLine Newsletter by an authorized administrator of ISU ReD: Research and eData. For more information, please contact ISUReD@ilstu.edu.

WEB: www.cscouncil.illinoisstate.edu

E-MAIL: CSCopenline@ilstu.edu

or: CScouncil@ilstu.edu

OpenLine is published monthly by the Civil Service Council of Illinois State University, Campus Box 1830, Normal, IL 61790-1830.

AUGUST 2012

VOLUME XXXVII, NUMBER 2

DATES TO REMEMBER

August 31.....OpenLine article deadline
August 31Next classified ad deadline
September 3Labor Day
September 4..... CS Council meeting @ noon
September 18... CS Council meeting @ noon
September 22 Fall begins
September 27 CSC Employee Fall Picnic

INSIDE THIS EDITION

Service Awards.....p. 2
Tip of the Hat.....p. 2
Potpourrip. 2
Open Basketball.....p. 3
New Resource to Help Plan Homecoming..p. 3
ISU Bowling League Seeks Membersp. 3
Fall Into Wellnessp. 3
Classified Ads.....p. 4
Next OpenLine article deadline.....p. 4

NEWSLETTER STAFF

EDITORAndrea Rediger
LAYOUT/DESIGN Narry Kim
PROOF READERS Seann Berrocales
.....Jean Darnall
.....Christa Lawhun
.....Patti Munster
.....Jason Taylor
COUNCIL LIAISONAmanda Smith

FRIVOLOUS FACTS

“TYPEWRITER” is the longest word that can be made using the letters only on one row of the keyboard.



[Source: <http://www.funfactz.com/>]

QUICK QUOTE



“Real education should consist of drawing the goodness and the best out of our own students. What better books can there be than the book of humanity?”

-- Cesar Chavez

[Source: http://www.brainyquote.com/quotes/authors/c/cesar_chavez.html]

ANNUAL EMPLOYEE FALL PICNIC – SAVE THE DATE

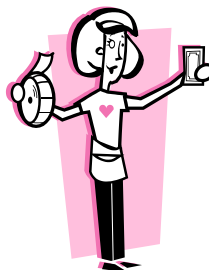
~ Jean Darnall, Civil Service Council

Mark your calendars for **Thursday, September 27, 2012**, and plan to attend the Annual Employee Fall Picnic hosted by the Civil Service Council and open to all faculty, staff, or students of ISU. We are still discussing the menu so look for more information coming soon. If you have questions, please contact Jean Darnall at djdarna@ilstu.edu (309) 438-8692.



SCHOLARSHIP FUNDRAISING RAFFLE

~Maureen Peel, Civil Service Council



Tickets for the Civil Service Scholarship Fundraiser will be available for sale at the Annual Employee Fall Picnic on Thursday, September 27th. Tickets will be \$1 each and \$5 for 6 tickets. The drawing will be held on the first Tuesday in December and tickets may be purchased from any council representative any time before the drawing. All monies collected will be used for scholarships awarded to dependents of ISU Civil Service employees.

OUTDOOR ADVENTURE CENTER CLOSING

~ Andy Read, Assistant Director, Campus Recreation

Whether you are a novice or expert, the Outdoor Adventure Center (OAC) has served as your resource for quality, affordable outdoor recreation experiences and equipment rentals for nearly forty years. The 220 North Main St. location will officially close its doors at the end of business at 2 pm on August 17. Any outstanding equipment rentals must be returned to the Outdoor Adventure Center by its closing on August 17. After August 17, equipment necessary for canoeing, kayaking, camping, and other outdoor activities will still be available for rent to ISU campus groups. Reservations will be required for all ISU group rentals and can be made by calling (309) 438-7529. Rental opportunities for individuals on campus will return at a later date.

An open house is planned at the OAC from 1-3 p.m. on August 17 for anyone interested in looking through pictures or simply reminiscing. “Even though the Outdoor Adventure Center will be closing its doors, the Outdoor Adventure program will continue to provide exciting outdoor recreation opportunities through the climbing wall, workshops and group team building,” said Bill James, Assistant Director for Outdoor and Non-Credit Programs.

For more information visit the Outdoor Adventure section of our website at CampusRecreation.IllinoisState.edu

SERVICE AWARDS

~ David Schaafsma, Human Resources Asst. Director

30 YEARS

- Cynthia Leiseberg, Superintendence, 8/15/1982

25 YEARS

- Robert Earl Crawford, Agriculture, 8/2/1987
- Lori J. Cumpston, Comptroller's Office, 8/17/1987
- Richard Alan Meredith, Janitorial, 8/3/1987
- Ronda Queen, Development-Information & Donor Services, 8/5/1987
- Tami Louise Radka, Administrative Technologies, 8/3/1987
- Marcia Irene Taylor, English, 8/24/1987
- Steven P. Wolfe, Dining Services, 8/10/1987

20 YEARS

- Cathy Jo Bess, Family and Consumer Sciences, 8/31/1992
- Judi Khalilallah, Dean of Students Office, 8/3/1992
- Kevin Kyle McCrone, Student Affairs IT, 8/3/1992

10 YEARS

- Rebecca Bogardus, Dining Services, 8/15/2002
- Stanley E. Camp, Building Maintenance, 8/5/2002
- Jennifer Jean Douth, Criminal Justice Sciences, 8/30/2002
- Adam L. Feaman, Dining Services, 8/19/2002
- Paula S. Graves-Hutson, Health Services, 8/26/2002
- Kathy L. Lock, Intercollegiate Athletics, 8/12/2002
- Holly Nicole Medler, School of Social Work, 8/1/2002
- Rebecca A. Meier, Dining Services, 8/26/2002
- Michael Kent Neal, Dining Services, 8/12/2002
- Jeanne Elaine Thompson, Admissions, 8/5/2002
- Tenna L. Webb, Mennonite College of Nursing, 8/5/2002



TIP OF THE HAT

~ Gail Norris, Human Resource Data Management

WELCOME TO ISU – JULY 2012

- Adam Behnke, Electrician, Building Maintenance
- Robert Blythe, Pipefitter, Building Maintenance
- Reed Davis, Greens Worker, Golf Course
- Jennifer Dodson, Office Support Specialist, Dean of Education
- Patricia Gudeman, Office Support Associate, Comptroller's Office
- Kimberly Grubb, Medical Insurance Spec II, Health Services
- Julia Janzen, Licensed Practical Nurse II, Health Services
- Rhonda Lovell, IT Support Associate, Human Resources
- Angela Lowery, Snack Bar Attendant, Dining Services
- Sarah Mohl, Office Manager, Psychology
- Gail Norris, IT Support Associate, Human Resources
- Daniel Roberts, Plumber, Building Maintenance
- Brian Smiser, IT Technical Associate, eMerge
- Bart Spaid, Pipefitter, Building Maintenance
- Brillington Ulloa, Snack Bar Attendant, Dining Services
- Stephen Wagner, Electrician, Building Maintenance

PROMOTIONS/RECLASSIFICATIONS – JULY 2012

- Elizabeth Barna, Office Support Specialist, English
- Ellen Birky, Office Manager, Intercollegiate Athletics
- Chad Brucker, Pipefitter Foreman, Building Maintenance
- Karen Dunton, Administrative Clerk, Geography-Geology (June)
- Melissa Harms-Jones, Police Telecommunicator Supervisor, University Police Department
- Jason Polin, Asst Chief Plant Operating Eng, Building Maintenance
- Angela Walters, Program Assistant, Illinois Special Olympics

RETIREMENTS – JULY 2012

- Garnet Allen, University Police Department
- Rodney Brown, Janitorial
- William Brown, Janitorial
- Linda Bryant-Smith, Dining Services
- Dianna Damkoehler, Thomas Metcalf School
- Stephen Dennie, Building Maintenance
- Mark Deterding, Campus Services Div Grounds
- Ernest Gonzalez, Building Maintenance
- Dennis Handley, Janitorial
- Gerald Hazelwood, Building Maintenance Bond Rev
- Cynthia Leiseberg, Superintendence
- Deborah Lescher, Geography-Geology
- Steve Mattingly, Building Maintenance
- Micaela McCombs, Sociology and Anthropology
- Earl Nalley, Janitorial
- Michael O'Grady, Campus Services, Grounds
- Michael Otto, Building Maintenance
- John Prather, Building Maintenance
- Alva Spencer, Dining Services (June)
- Sharon Stille, Telecomm Network Support Services
- Robert Strawser, Building Maintenance
- Gail Wertz, Dining Services (June)
- Bradley Winans, Business Intell/Technical Solutions

RESIGNATIONS – JULY 2012

- Joshua Champion, University Police Department
- Shikira Chavers, Politics and Government
- Lynne Morrison, Public Service
- Brian Pufahl, Dining Services (June)
- Anthony Schwartz, Human Resources

POTPOURRI

~ Civil Service Council

SYMPATHY – OUR SINCERE SYMPATHY TO:

- To the family of Kevin "Charlie" Yates, Cook, Linkins Dining Center, who passed away on May 18, 2012.
- Lisa Jones, Cook, Watterson Dining Center, on the passing of her mother-in-law.
- Tina Williamson, Baker, Watterson Dining Center, on the passing of her grandfather, Kenneth Williamson on June 10, 2012.
- Kyle Vann, Food Service Administrator I, Watterson Dining Center, on the passing of his grandmother, Theresa A. J. Vann, on June 25, 2012.
- To the family of Paul Collins, Electrician, Facilities Management, who passed away on August 1, 2012. Paul served on the Civil Service Council as a representative for Group 4 employees.



~~~~~  
*Your help in providing Potpourri information is needed and appreciated. Feel free to voluntarily provide Potpourri information, taking note of the article deadlines printed in each issue. Report births, marriages, or deaths of immediate family members via email to [cscopeonline@ilstu.edu](mailto:cscopeonline@ilstu.edu). Notifications are not verified by birth, marriage, or death certificates.*

## OPEN BASKETBALL

~ Andy Read, Assistant Director, Campus Recreation



Campus Recreation will be offering open recreational basketball for the fall semester for faculty, staff and annuitants of Illinois State University. Beginning August 21, games will be available at Horton Field House on Tuesdays and Thursdays from 11:45 a.m. – 1:15 p.m.

Fall fees for “Noon-ball”, as it is more commonly known, are \$60 and can be paid on-site. Pre-registration is also available beginning August 1 at the Bob and Julie Dobski Welcome Center in the lobby of the Student Fitness Center. For more details or for first time registration, please call 309.438.5106.

## NEW RESOURCE HELPS HOMECOMING PLANS

~ Rachel Hatch, Media Relations



University departments planning Homecoming alumni events will have some extra guidance this year.

Alumni Relations has created a Homecoming Resource Page on

the Illinois State website in order to provide information on planning alumni reunions, tailgating and other events. Access the page at <http://illinoisstatehomecoming.com/downloads/resources-2012/faculty-staff-resources/>

The Homecoming Resource Page will offer dates, times, information, links and forms to help departments and units prepare for everything from taking part in the Homecoming Parade to getting hotel information to alumni.

For information, contact Alumni Relations at (309) 438-2586.

## ISU BOWLING LEAGUE SEEKS MEMBERS

~ Jason Taylor



The 2012-13 ISU Faculty/Staff Wellness Bowling League season will be starting soon. Faculty, staff, retirees, spouses and immediate family members (living in the family residence) are eligible to participate. The

league bowls on Wednesday evenings at the Bowling and Billiards Center (BBC).

An organizational meeting is scheduled at Bowling & Billiards Center on Wednesday, August 15 at 4:45 p.m.

Tentative start time for the league is 4:45 p.m., with lanes open for practice at 4:30 p.m. This is a USBC sanctioned bowling league. A sanction fee and weekly bowling fees are assessed.

Tentatively the league may begin Wednesday, August 29, or Wednesday, September 5. The schedule, rosters and fees will be determined at the organizational meeting.

Those interested in bowling should contact: Mary Hospelhorn (Secretary) by phone (438-5645) or email ([mehospe@ilstu.edu](mailto:mehospe@ilstu.edu)) or Kevin Hand (Treasurer) by phone (438-1602) or email ([klhand@ilstu.edu](mailto:klhand@ilstu.edu))

## FALL INTO WELLNESS

~ Erin Link, Health Promotion and Wellness

### State of Your Health

Results from the 2011 Faculty Staff Health Status survey are now available online! Visit [Wellness.IllinoisState.edu](http://Wellness.IllinoisState.edu) to view. Presentations on the survey findings and their implications are also available. Call (309) 438-8845 to schedule.

### Special Stress Reduction Series Available this Fall

The Practice of Positive Living is a pilot stress management program that will assist participants with being more present in their daily lives. The eight week program utilizes support, meditation, breathing practices, self-discussion, exercise and nutrition, and journaling as resources to achieve the intended outcome. No special equipment or clothing is required for participation. Sessions will be held on Tuesdays from September 18 through November 6 from Noon to 1 p.m. in McCormick 159. Sessions are facilitated by Jill Belongia, B.A., ERYT. Registration is required and can be found online at [Wellness.IllinoisState.edu](http://Wellness.IllinoisState.edu) or by calling (309) 438-WELL (9355).



### Fall Lifestyle Enhancement Class Registration

Registration is now available for fall Lifestyle Enhancement classes. Fall classes include Badminton, Balanced Bellies and Backs, T'ai Chi, Table Tennis and a variety of yoga classes. Registration is required and can be found at [Wellness.IllinoisState.edu](http://Wellness.IllinoisState.edu) or by call (309) 438-9355.

### Walking Maps Available



Walking is a great way to fit activity into your work day and take a much needed break from repetitive tasks. Convenient, wallet-sized campus walking maps with a variety of route lengths are available from Health Promotion and Wellness. Call (309) 438-WELL (9355) or stop by McCormick 187 to get one today!

Routes may also be viewed online by visiting <http://wellness.illinoisstate.edu/healthy-living/fitness/walking.shtml>

### Wellness Presentations Available

Now is a great time to schedule wellness presentations for your area. Presentation topics include how to achieve health goals, ergonomics 101, guided relaxation, yoga at your desk, campus health behaviors and more. To schedule, call (309) 438-WELL (9355) or email [nbgegel@illinoisstate.edu](mailto:nbgegel@illinoisstate.edu)

### Ergonomics at Work

Pain and discomfort are signals that your body is out of balance. Have you considered an adjustment of your work space? One-on-one appointments can be requested to review work postures that increase risk of injury and offer recommendations for a safer, seated work environment. Ergonomics 101 presentations may be scheduled for your department as a proactive approach to working safer. Consultations and presentations are available free of cost. Contact (309) 438-8845 for more information.

**CLASSIFIED ADVERTISEMENTS**

**Personal Service:**



➤ Radon mitigation IL-licensed, insured, free estimates. 2400+ successful installations, 100% satisfied customers. David Smith Radon Remedies 1-800-838-1352.

➤ Ballroom, Latin and Nightclub dance classes for adults, taught by Cathy Hempstead, Dance Partners Studio. 309/661-0529. [www.dancepartners.info](http://www.dancepartners.info)



➤ Tree, shrub and plant services. Trimming, pruning, planting, maintenance, and renewal. Reasonable rates. Free estimates. Call (309) 275-6922.



➤ Roofing, Siding, Windows, Painting, Remodeling, Porches, Decks and Miscellaneous. Home Repairs. Licensed. Bonded. Insured. Call Mark at Boolman Homes (309) 829-6273.



**NOTE: The Civil Service Council does not endorse any of the product(s) or service(s) included in the Classified Ads section of the OpenLine newsletter.**

**NEXT OPENLINE ARTICLE DEADLINE**

The next deadline to submit articles to the *OpenLine* newsletter will be **Wednesday, August 31**. Items pertinent to Civil Service employees can be sent to [cscopenline@ilstu.edu](mailto:cscopenline@ilstu.edu).

**OpenLine Classified Ad Submission Form**

*All information must be printed clearly.*

First and Last name: \_\_\_\_\_

Employment status: Full time / part time / retired / \_\_\_\_\_

Home phone: (\_\_\_\_\_) \_\_\_\_\_ - \_\_\_\_\_

ISU phone: \_\_\_\_\_ - \_\_\_\_\_

Best time to reach you at your home phone: \_\_\_\_\_

E-mail: \_\_\_\_\_

Campus Box/Dept: \_\_\_\_\_

Check one category:

- Free Items (\$2)
- For Sale-Auto (\$5)
- For Sale-Other (\$2)
- Personal Service (\$5)
- Wanted (\$2)

**ONE word per box. 20 words or less.**

|  |  |  |  |
|--|--|--|--|
|  |  |  |  |
|  |  |  |  |
|  |  |  |  |
|  |  |  |  |
|  |  |  |  |

Make checks payable to: Civil Service Council - *OpenLine*.

Send this completed form and payment by the published classified ad deadline to:

**Maureen Peel, 1100 VP Finance & Planning, 438-5152**

For more information about advertising in the *OpenLine* visit [www.cscouncil.illinoisstate.edu/openline/](http://www.cscouncil.illinoisstate.edu/openline/)